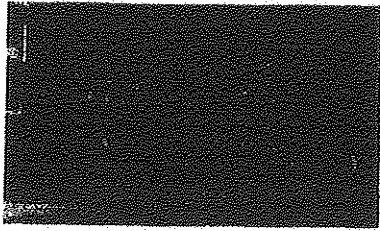


S ? W L

DIRECTIONS



University of Massachusetts Lowell
Center for Lowell History
Patrick J. Mogan Cultural Center
40 French Street
Lowell, Massachusetts 01852

Hours: Monday - Friday
9:00 - 5:00 →
Saturday
10:00 - 3:00

Phone: 978-934-4997
Fax: 978-934-4995

[| Home Page](#) | [| Special Collections](#) | [| Campus Directions](#) |

Map:

Routes:

Center for Lowell History Director

Martha Mayo Martha_mayo@uml.edu 978-934-4998

Staff

Janine Whitcomb Janine_whitcomb@uml.edu 978-934-4997
Patricia Rowe Patricia_rowe@uml.edu 978-934-4997
Roberta Otremba rotremba@massed.net 978-934-4997
Janet Pohl Janet_pohl@uml.edu 978-934-4997

Volunteers

Shirley Rathbun
Francis Endyke
James McNamara

[| Top Of Page](#) | [| Home Page](#) | [| Special Collections](#) | [| Directions](#) |

**Boston & Maine Railroad
Historical Society
Archives**

[[Home Page](#)] [[Special Collections](#)] [[BM](#)] [[Back](#)]

The Boston & Maine Railroad Historical Society established an Archive in 1971 at the time of the Society's founding. The purpose of the Archive was to preserve the histories of railroads, primarily that of the Boston & Maine Railroad and those absorbed by it, but also of other railroads in New England. In December of 1988 the Archive moved into the University of Massachusetts Lowell Libraries, Center for Lowell History, located in the Patrick J. Mogan Cultural Center at 40 French Street Lowell, Massachusetts.

All B&M RR Historical Society Archive materials in the Center for Lowell History are the property of the Society. The collection is accessible to everyone during the Center's office hours. All Archive materials must be used within the Center for Lowell History, and cannot be removed from the premises unless pre-approved by an officer of the Society.

Scope of the Collection:

Although the primary focus of the collection is documentary material pertaining to the B&M RR and its corporate predecessors, the collection includes materials pertaining to the history of other New England railroads and electric railroads (trolley lines). The collection is comprised of paper items and photographs. Some of the photos and documents in the collection date back to the mid 1800's, though most of the collection is 20th Century. It is particularly strong in the area of mechanical drawings for hardware used in locomotives and rolling stock, and in the area of track maps of the Boston & Maine and Maine Central Railroads. There are also a large number of books and magazines on railroading and model railroading.

The Archive welcomes donations of appropriate materials from any source. Though the Society cannot appraise the monetary value of donated materials, it is a non-profit charitable organization, and donations do qualify as tax deductions. Each collection or item donated will be carefully reviewed, and if appropriate to the Archives, gratefully accepted and made available to all researchers.

Categories of Materials

Books:

This growing collection emphasizes work dealing with New England railroads in general, and the B&M RR in particular. The region's electric railways, or trolley lines are also a part of this grouping. Included in the general reference books on railroads are histories, contemporary accounts, and photographic essays, builders' cyclopedias for locomotives and rolling stock, and Annual Reports of the State Railroad Commissions.

In this collection you will find photos of the B&M RR steam locos, diesels, and gas electric's, and B&M RR rolling stock, such as passenger cars, freight cars and maintenance cars. Also included are photos of the B&M RR stations and depots.

Periodicals:

Of primary interest are back issues of the B&M RR Bulletin, a magazine format rich in historical articles complimented by high-quality photographs of the Boston & Maine and its predecessor railroads. There is a fairly complete collection of the "B&M Employees' Magazine", and a collection of the employees' magazine for the

Maine Central RR as well. Other periodicals include Trains; Railroad; Railroad History; National Railway Bulletin; Railroad Enthusiast; Pool's Manual; Moody's Manual; Official Railway Guide and others too numerous to mention.

The collection also includes periodicals of the most popular magazines for railroad modelers. A master index is available in the Archive's book section.

Mechanical Drawings:

This is a large collection of detailed blueprints and mechanical drawings of the components used in B&M RR steam locomotives. In some cases you will find drawings of the locos themselves. There are also drawings for components used in other B&M RR equipment and rolling stock.

Maintenance Cards:

A collection of shop maintenance cards for each B&M RR steam loco, covering the period 1913 to 1955. The cards were completed each time a loco received repairs, improvements, or overhauls in excess of \$100. They include the date, work done, hardware changes, and other pertinent data. There are over 15,000 cards, which trace the life of each loco.

A similar set of cards exists for B&M RR passenger cars, and non-revenue equipment. Each card indicates date of build and builder, renumbering, special features, and final disposition of that car, covering the period 1910 to 1940.

Track Maps:

The location of the track bed and all of the adjacent features, such as roads, buildings, railroad structures, bridges, waterways, were documented on detailed and precisely scaled maps drawn up by B&M's Engineering Department. As features changed the maps were updated. There are several thousand maps covering the period of 1880 to 1960.

A similar collection containing the "Right-of-Way & Track Map" series, shows much the same detail and view as the Track maps, except that an entire main line or branch line is shown from its beginning to its end. Each set of R-O-W maps is a series of drawings; each one beginning where the previous drawing ended. They precisely locate and define all features relevant to the railroad along the right-of-way. This collection contains several thousand drawings, originally drawn in 1914, but many have been revised to show subsequent status as late as the 1970's.

Valuation Survey Records:

As directed by the government, the B&M RR along with all other US railroads conducted a massive inventory and evaluation survey of its fixed assets in 1914. Survey parties combed every inch of the railroad, measuring and describing each aspect. They documented their findings in engineering notebooks, describing and placing a dollar value on objects so diverse that they ranged from depots to deep cuts, from bridges to crossbucks, from rock quarries to real estate. Some original notebooks are stored in the Archive, and present an all-encompassing tally of the railroad's infrastructure in 1914. Field sketches of many structures are also included.

Timetables:

Employee and public timetables from the B&M RR are well represented in the Archive. The set of B&M RR employee timetables for the entire system is complete from April 1928 to present. Not so complete are the timetables published for each division from 1910 to 1928. There are many gaps in the series prior to the above dates, and also many gaps in the timetables beyond 1928, with some issues in very poor condition.

Employee and public timetables from other New England railroads are less numerous, but still well represented in the collection.

Annual Reports:

Available are the annual reports by the Directors of the B&M RR to the stockholders. Reports from 1878 to 1885, and 1917 to 1960 are somewhat complete. Some annual reports of B&M predecessor railroads are included. Annual reports done for the Interstate Commerce Commission are also available.

The reports are from the B&M, the Maine Central and the Portland Terminal RR. Unlike the reports to stockholders, these contain a great deal of additional financial data and operating statistics in a format specified by the ICC, covering 1940's to 1960's.

A third type of annual report were those filed by the B&M RR on its various leased roads to the Massachusetts Department of Public Utilities. They include the years 1910 to 1970. These reports are primarily focused on operating control, and legal relationships between the corporate entities and their subsidiary and leased companies. Included in this collection are reports by the Central Vermont Railway.

Patrick McGinnis Collection:

This is a collection of reports, speeches, cost studies, photographs and other documents that were accumulated by Patrick McGinnis, President of the B&M RR, 1950 - 1960.

Station Real Estate Disposition Records:

These records consist of correspondence relating to the closing of passenger and freight stations, sales of land and buildings, and other legal transactions in disposing of railroad property in the 1940 to 1970 period. Other documents and correspondence are also enclosed. Only a few such records were saved (A - Boscawen, and Thornton - Z). All else was discarded before the Society could intervene.

About the Society:

The Society publishes an historical magazine titled the B&M Bulletin, and a bimonthly Newsletter. It has also published three books. They hold monthly meetings generally in Lowell, Mass. [U.S.A.]. At present the Society has approximately 1200 members across the U.S. and in foreign countries. The B&MRRHS is not affiliated with the Boston & Maine Corp., or any of its corporate predecessors or successors. Basic membership is \$25.00 per year. Applications for membership should be sent to B&MRRHS Membership, P.O. Box 9116, Lowell, MA 01852 [U.S.A.]. Back issues of the B&M Bulletin is available for purchase from the B&MRRHS, P.O. Box 469, Derry, N.H. 03038.

Summary:

Though much has been lost, the little that remains is well preserved in the Archive. Highlighted is only a portion of the documentation available. The Society invites you to come and familiarize yourself with its entire collection.

[[Top Of Page](#)] [[Home Page](#)] [[Special Collections](#)] [[BM](#)] [[Back](#)]

A GUIDE TO THE

**BOSTON & MAINE RAILROAD
HISTORICAL SOCIETY
ARCHIVES**

LOCATED AT

CENTER FOR LOWELL HISTORY PATRICK MOGAN CULTURAL CENTER

40 FRENCH STREET

LOWELL, MASSACHUSETTS

FOURTH EDITION

FEBRUARY 1999

CONTENTS

Welcome	3
Scope of the Collection	4
Sources of Material in the Collection	4
The Donation Process	5
The Cataloging System	5
To Find Items in the Card Catalog	5
To Find Specific Types of Materials	6
Books	6
Periodicals	7
Photographs	7
Negatives	8
Locomotive and Car Drawings	8
Steam Locomotive Maintenance Cards	9
Passenger and Non-Revenue Equipment Record Cards	9
Track Drawings	9
Valuation Survey Records	9
Valuation Plans	10
Structure Inventory and Valuation Record Books	11
Station Real Estate Disposition Records	11
Time Tables	11
Annual Reports	12
Patrick B. McGinnis Collection	12
Other Paper Materials	12
Hardware Artifacts	13
About the Archives Committee	13
Who to Contact for More Information	14

Welcome to the Boston and Maine Railroad Historical Society Archives.

The Boston & Maine Railroad Historical Society, Inc., is a non-profit historical organization formed in 1971 to preserve and publish information and photographs pertaining to the history and operations of the B&M Railroad and its predecessors. The Society fulfills its educational mission through publication of a quarterly historical magazine called the B&M Bulletin and a bimonthly Newsletter. The Society has also published three books on Boston and Maine Railroad subjects. Monthly meetings are held in Lowell, Massachusetts and elsewhere. At present the Society has about 1300 members. Basic membership costs \$25.00 per year. Applications for membership are available at the Archives or from the Membership Secretary, B&MRRHS, P.O. Box 469, Derry, NH 03038. Back issues of the B&M Bulletin may be ordered from the same address.

The establishment of an archives as a repository for documents pertaining to the Boston and Maine Railroad and the history of railroads in New England was one of the Society's principal objectives from its inception. The Society has maintained an archival collection, of sorts, since the beginning. At first, all materials were stored in members' attics and basements, and centralized access was not possible. Later, a small amount of material was stored at Merrimack College in North Andover, Mass., but space at this location was quite limited. In June 1978, a formal agreement was made between the Society and the University of Lowell providing for the establishment of the Society's Archives in the Special Collections Department at the University's Alumni-Lydon Library. This permitted the consolidation of material which had previously been stored in a number of temporary locations, and enabled cataloging of the collection to begin.

In December 1988, the B&MRRHS Archives, along with the entire University Special Collections Department, moved into the Center for Lowell History in the new Patrick Mogan Cultural Center at 40 French Street in downtown Lowell. The building was constructed by the Lowell Historic Preservation Commission with funding from the National Park Service. The University of Lowell entered into a long-term lease for space in the building. This building provides an area of about 900 square feet of space for the B&MRRHS Archives. In the Fall of 1991, the University of Lowell became the University of Massachusetts at Lowell. The University provides space, security, and access to the collection, but processing of materials is done by volunteer members of the Society's Archives Committee.

Material in the B&MRRHS Archives is carefully stored using proper archival procedures. For example, photographs and paper items are stored in acid-free folders in metal file cabinets. Large drawings are opened up and stored in flat files, also in acid-free folders.

All B&MRRHS Archives material in the Center for Lowell History is the property of the Society. The collection is accessible to anyone, whether they are members of the Society or not, during hours when the Center for Lowell History is open. The Head Librarian, Martha Mayo, can assist you in finding what you are looking for. More specific requests for information or guidance may be directed to B&MRRHS Archives Committee members or to others whose addresses appear at the end of this guide.

All Archives materials must be used within the Center for Lowell History. Only designated officers of the Society and certain Archives Committee members and publications staff members are authorized to borrow materials from the collection.

Scope of the Collection.

Although the primary focus of the collection is material pertaining to the B&M Railroad and its corporate predecessors, the collection does encompass (to varying degrees) material pertaining to the history of other New England railroads and electric railways. Books and periodicals that are national in scope are included if they contain material important to the history or understanding of New England railroads. Basically, the Archives' accession policy focuses on the B&M and its predecessors, and works outward toward New England railroad and electric railway history in general. The collection comprises paper and photographic materials. Hardware artifacts are not included in the Archives collection at Lowell; they are being kept at a temporary storage location until such time as the Society can arrange permanent storage and display of these items. The Archives includes some materials dating from the mid 19th century, but the bulk of material dates from the beginning of the 20th century.

The collection is particularly strong in its mechanical and track drawings and time tables. The collection also contains a large number of annual reports and photographs, and a substantial number of periodicals.

Sources of Materials in the Collection.

The Archives includes materials acquired from a wide variety of sources, including private collectors, retired and active railroad employees, and the Boston & Maine Corporation. Initially the collection consisted of a small group of books, magazines, time tables, and photographs. A large number of engineering drawings were donated by the B&M Corporation when the railroad's office building at Greenfield, Mass. was closed in the early 1970s. In June 1977 the Society acquired a huge collection of material from the estate of the late Richard K. Jones, a former claim agent for the B&M and avid railroad buff. Since that time additional materials have been donated from hundreds of different sources, the largest of which (in terms of volume) have

been from the collections of Harry U. Camp, Robert E. Chaffin, Dana D. Goodwin, Donald S. Robinson, Clyde R. Smith, Samuel Vaughan, and Stanley Y. Whitney. In December 1983, a large quantity of B&M Valuation records dating from 1915 were donated by the B&M Corporation when its last remaining offices at 150 Causeway Street in Boston were moved to Billerica.

The Donation Process.

The Archives welcomes donations of appropriate material from individuals as storage space permits. The Society is a non-profit charitable organization and donations qualify for tax deductions; however, the Society can not appraise the monetary value of donated material. An individual's donations are recorded on cards in a donor file.

Occasionally the Archives receives duplicate materials or items pertaining to subjects outside its collecting area. Such items are sometimes traded or sold to raise funds to help support the Archives. The Archives reserves the right to decline donations for any reason.

The Cataloging System.

The card catalog is the basic finding aid to locate materials in the collection. Individual items are cataloged according to a classification system especially designed for the B&MRRHS Archives. The only items that are generally not cataloged individually are mechanical drawings, large-format track maps, photographs, real estate records, and periodicals.

To find items in the card catalog

1. Look up the desired subject in the blue Classification List kept near the left end of the file cabinets on the north wall.
2. Note the classification number of the desired subject. The number is composed of a decimal point, a letter, and a 4-digit number. For example, the classification number for Time tables-Employee is .T4832.
3. Go to the card catalog located in row D of the stacks. Catalog cards are sorted alphabetically, then numerically, by classification number. Under .T4832, for example, will be found cards describing all materials cataloged under the Time tables-Employee subject.
4. After the classification number, a group of letters appears which identifies the railroad name, e.g. BM for Boston & Maine or BLOW for Boston & Lowell. Next will appear a set of numbers identifying the date: 2.907 or 2.1907, for February

1907. This additional information may help reduce the number of items to be searched. The file number shown on a card identifies where the item is stored (e.g. vertical file, flat file, bookshelves, etc.). Generally when this box is blank, the item can be found in the vertical file.

To find specific types of materials.

Books are shelved alphabetically by author's last name in row B of the stacks. The collection emphasizes works dealing with New England railroads and electric railways, but also has general railroad reference books. Included are pictorial works, car- and locomotive builder's cyclopedias, book-format railroad tourist guides, and government publications. Most books have been cataloged on individual catalog cards under classification number .B6444.

Books of general interest to persons researching the early history of the B&M Railroad are:

Baker, George P. The Formation of the New England Railroad Systems. Cambridge: Harvard University Press, 1937.

Bradlee, Francis B. C. The Boston & Lowell Railroad, the Nashua & Lowell Railroad, and the Salem & Lowell Railroad. Salem, Mass.: Essex Institute, 1918 (not indexed).

Bradlee. The Boston & Maine Railroad. Salem, Mass.: Essex Institute, 1922 (not indexed).

Bradlee. The Eastern Railroad. Salem, Mass.: Essex Institute, 1922 (not indexed).

Harlow, Alvin F. Steelways of New England. New York: Creative Age Press, Inc., 1946 (indexed).

Periodicals. Many regional and national periodicals can be found in row C of the stacks. Periodicals are generally not cataloged on individual catalog cards. They are shelved alphabetically by title. Among the most frequently consulted are:

B&M Bulletin (indexed) and Newsletter published by B&MRRHS
Boston & Maine Railroad Employees Magazine
Moody's Manuals
National Railway Bulletin (NRHS),
Official Railway Guide
Poor's Manuals
Railroad
Railroad History (R&LHS)
The Railroad Enthusiast

Trains

Annual State Railroad Commission reports from most New England States are also found on the shelves in row C.

Photographs. All photographs are stored in vertical file cabinets located on the north wall (last 3 on right). Photographs showing B&M stations, scenes, and trains at identifiable locations are filed alphabetically by station name at the beginning of the photograph files. Then follow photos of other railroads in alphabetical order, first, by railroad, second, by location. B&M steam locomotive photographs are filed next. They are arranged by locomotive wheel classification (0-4-0, 0-6-0, etc.), then by locomotive number within each wheel classification. B&M diesel locomotive photographs are filed next, followed by passenger cars, freight cars, maintenance of way equipment, and other cars and equipment.

The nucleus of the photograph collection is a group of about 3000 B&M prints acquired as the Richard K. Jones Collection. Most of these photos are 8" x 10" and were taken for or by the railroad for claims department legal purposes during the 1900-1930 era. Some were taken by official B&M photographer George H. Hill for the claims department for legal purposes during the 1940s and early 1950s (these were not the Hill photographs taken for publicity purposes). Significant additions to the collection have been made by the addition of prints from the Stanley Y. Whitney Collection, and from member donations.

The Dana D. Goodwin Collection of black and white photographs consists of about 5100 5" x 7" prints in about 50 photograph albums. These photographs have been cataloged on computer, and a computer printout of these photos (one listing sorted by railroad and engine number, the other sorted by railroad and location) is available for reference purposes on top of the file cabinet that contains the photograph albums. The collection is kept in a locked cabinet and a staff member will assist if necessary.

The Society can arrange for prints to be made from most photographs in the collection. If the Society does not already own the negative, a copy negative must be made. The cost of making copy negatives and prints is charged to the person requesting it. The copy negative will remain the property of the Society. The Society also charges for postage, packing, and a 15% handling fee (minimum \$10) in connection with this service. Digital scanning of images belonging to the Archives is prohibited.

Orders for prints are handled by Rick Nowell, Archives Chairman, 7 Johnson Rd., Andover, MA 01810-1711. Photographs are for the personal use of the purchaser. Reproduction or commercial use of such photographs is prohibited without written permission of the Society, and license fees are charged for commercial use. The license fee for one-time use of an photograph (black and white or color) from the Society's collection in a commercial publication is \$30 per photograph in addition to

the cost of making negatives and prints as outlined above. The B&MRRHS supports guidelines for ethical photograph use set forth in the article entitled "Photo Use: Responsibilities and Rights" by Herbert H. Harwood, Jr., in Railway and Locomotive Historical Society Railroad History No. 135 (Fall 1976), pp. 95-99. The Society can not be held responsible for misuse or mis-crediting of photographs by individuals who had legitimately reproduced photos from the Society's collection.

All photographs reproduced from the Archives must have the following information recorded on the back of each print made: name of photographer, date and location of photo (where available), any other relevant descriptive information, the statement that the photo is reproduced from the B&MRRHS Archives, the negative number, and that further reproduction is prohibited without permission from the Society. *No prints, negatives, or slides may be removed or borrowed from the collection except by authorized Society officers, Archives Committee members, and publications staff members.*

Negatives exist for only a small portion of the prints in the collection. They are filed in a locked cabinet. Most copy negatives are identified by a PN (photographic negative) prefix in the negative number.

Locomotive and Car Drawings. The Archives contains a large collection of detailed blueprints and drawings of B&M steam locomotives and components, as well as drawings of other B&M equipment and rolling stock. These drawings are stored in the gray steel flat files and in hanging files. Drawings are arranged and filed by classification number. Some, but not all, drawings have been cataloged.

Copies of blueprints and drawings may be ordered from Adrian Gintovt (a member of the Archives Committee) at the address listed at the end of this Guide. Cost is based on size of the blueprint or drawing to which will be added shipping charges and a service fee. Drawings sold in this manner are for the personal use of the purchaser. Commercial reproduction or use of such drawings is prohibited without written permission of the Society, and license fees are charged for commercial use in the same manner as with photographs.

Steam Locomotive Maintenance Cards. These cards (Form ML-2) are shop records covering the years 1913 to the mid-1950s that were completed whenever B&M steam locomotives received repairs, improvements, or overhauls that cost in excess of \$100. They are arranged numerically by engine number and then chronologically within each engine number, and show the type and date of repairs made, addition/changes in components (feedwater heaters, power reverse gears, etc.), reclassifications, and other data from about the years 1911-1955. There are some gaps in the collection for some locomotives, but overall the collection is complete. There are over 15,000 cards in the collection. Cards are stored in a red microfiche cabinet alongside the glass window that overlooks the inside of the storage room.

Passenger and Non-Revenue Equipment Record Cards. These cards, size 5" x 8", were donated by the B&M Mechanical Department. They cover all non-freight car rolling stock that has been scrapped, sold, or otherwise disposed of by the B&M. For each car, the cards show date built, builder, renumbering (if any), special features, and the disposition and date of disposition of the car. These cards cover the approximate years 1910 to 1940. They are arranged in order by type of car and then by car number. Cards are stored in a red microfiche cabinet alongside the glass window that overlooks the inside of the storage room.

Track Drawings. These drawings are blueprints and in some cases original linen drawings showing tracks, yards, bridges, and in a few cases stations and other buildings. Most of these drawings were obtained when the B&M's office building in Greenfield, Mass. was closed, hence most drawings are from the middle and west ends of the Fitchburg Division and from the Conn. River Division. Track drawings are arranged in the flat files by valuation section. These drawings have been cataloged by Ron LeBlond (a member of the Archives Committee). The catalog is contained in a white three-ring binder located near the flat files. Some of the track and yard plans are too long to be stored in flat files; they have been attached to hangers located to the left of the bookshelves.

Valuation Survey Records. An enormously valuable addition to the Archives collection was made in December 1983 with the donation of a large quantity of B&M Valuation Survey records by the Accounting Department of the B&M Corp. The B&M, along with all railroads in the U.S., conducted a massive inventory and valuation survey of the entire physical plant of the company in 1914 as required by the Interstate Commerce Commission. The purpose of the survey was to determine an accurate valuation of the railroad's capital facilities in order to enable the Commission to set rates whereby railroads would be assured a reasonable rate of return on their capital assets. To conduct the survey, the railroad sent out survey parties to inventory and measure the dimensions of all buildings, itemize their contents, and calculate the costs of replacing all property (bridges, buildings, tracks, yards, fills, cuts, etc.).

Valuation Survey records in the collection may be grouped into two general categories:

Valuation plans. These blueprint maps were originally prepared in 1914 in order to inventory the location of all tracks, buildings, bridges, culverts, signals, cattlepasses, property boundaries, track fences, etc. for all railroad lines then operated by the B&M. These maps are all about size 24" x 56". They are highly detailed, drawn to a scale of 1" = 100 feet. Each map covers one mile or less of track. In addition to all tracks, structures, and property boundaries, these maps show from whom and the date when all land was acquired or obtained at the time the railroad

line was originally constructed. Included are references to the location of deed documents in county land registry offices.

These maps cover approximately 1100 route miles of railroad lines in Massachusetts, New Hampshire, Maine, and New York State that are no longer owned by the B&M, either because of abandonment or sale to the MBTA. Maps of railroad lines still owned and operated by the B&M are not included in the collection.

Maps are located in the large gray steel vertical map cabinet on the west wall. To find the desired map, first obtain the Valuation Section Number from the blueprint map labeled "Boston & Maine Railroad Index, Valuation Sections" that can be found under the lid of the cabinet.

Next, look up the valuation section number on the sheets labeled "Key to Folder Numbers" that can also be found under the lid of the cabinet. This will indicate the number of the folder in which the relevant maps are stored. *Please use care in removing and replacing folders and maps; they are generally in poor condition.*

In February 1989, the Society received the donation of a set of linens for Valuation Plans covering the entire Maine Central Railroad (except the narrow gauge lines). These are presently stored in rolls on shelves.

Structure Inventory and Valuation Record Books. As part of the valuation survey process, survey parties were sent out to measure the dimensions and to inventory the contents of all railroad-owned structures, including stations, engine houses, freight houses, milk sheds, etc. In most cases several pages of data were prepared for each structure, including a floor plan, a detailed inventory of furniture and other contents, a description of the condition of different parts of the structure, and sometimes a sketch of a portion of the framing or exterior of the building showing the type of construction employed. (Structure photographs were also taken as part of the inventory process. Many of these photos are now at the Walker Transportation Collection of the Beverly (Mass.) Historical Society.) All inventory and valuation records are located in blue-green cloth-bound notebooks, which are shelved at the west end of row A of the stacks. These records are arranged in order by Valuation Section Number, by ICC account number within each Valuation Section Number, and then in geographical sequence along the railroad line. Most notebooks have a typewritten index at the front of each volume. A general index to the notes is located in a three-ring binder stored at the end of the run of notebooks.

Station Real Estate Disposition Records. These records consist of files containing correspondence and portions of right-of-way and track maps that relate to the closing of passenger and freight stations and sale of land, buildings, etc. by the B&M. Records are generally from the 1940-1960 period. They are in alphabetical order by station name within each State, and are filed in acid-free cartons in row A of the stacks. All of these records were donated by the B&M Corp. in about 1978 when they were declared surplus at the railroad's Billerica offices. Unfortunately, most of the alphabet was missing when these files were acquired, so the files run only from A - Boscawen and Thornton - Z.

Time tables. In September 1990, an enormous collection of historic employee time tables from the B&M and predecessor companies was donated by Donald S. Robinson.

The set of B&M system employee time tables (April 1928 to date) is complete. Prior to April 1928, B&M employee time tables were published separately for each division. The collection includes most of the divisional time tables issued between 1910 and April 1928. Prior to 1910, and especially prior to 1900, there are many gaps in the employee timetable collection. They are stored in gray acid-free boxes in row D of the stacks. Employee time tables for other railroads are located under classification number T4832 in the vertical file cabinets on the north wall.

B&M public time tables were published in divisional format prior to 1918. The Archives includes a number of these from the 1890s to 1918, but has by no means a complete set. B&M Form 1 system public time tables are included in the Archives for the years 1919-1931 but some issues and years are lacking and some copies are in poor condition. The collection of B&M system public time tables is generally complete from 1931 to date. Public time tables for the B&M and other railroads are located under classification number. T4839 in the vertical file cabinets on the north wall.

A small collection of 19th century railway guides is available to supplement the individually published railroad company time tables. Railway guides are located under classification number .T4835 in the vertical file cabinets on the north wall. There are a number of copies of the Official Railway Guide from the 1930s through the 1970s stored in row C of the stacks with the periodicals that also provide time table information.

Annual Reports. Railroad company annual reports *to stockholders* are filed under the M3118 classification in the vertical files or in the locked cabinet near the emergency exit. During the summer of 1983, an important addition to the collection was made in the form of copies of a large group of B&M, Maine Central and Portland Terminal Railroad annual reports that were submitted *to the Interstate Commerce Commission*. Unlike the versions published for stockholders and the public, these reports contain a great deal of additional financial data and operating statistics in a format specified by the ICC. These reports cover approximately the 1940s to 1960s.

Because of their bulk, they are filed on the shelves in row D rather than in the vertical files.

In May 1987, the Society received the donation of a large number of original annual reports that were filed by the B&M and its various leased companies to the *Massachusetts Department of Public Utilities* when that agency decided to discard them. These bound volumes generally cover the years 1910 to 1970. They primarily contain information pertaining to operating control and legal relationships between the companies and subsidiary and leased companies. They are not as detailed as the annual reports published by the railroads to their stockholders. Also included in this collection are some Central Vermont Railway reports. These reports are filed on the shelves in row C.

Patrick B. McGinnis Collection. In May 1989 the Society received the donation of a number of notebooks containing reports, speeches, cost studies, and photographs that once belonged to Patrick McGinnis, president of the B&M in the late 1950s and early 1960s. Included is some material dating from before he became president of the B&M as well as some personal materials. These black notebooks are located on the shelves in row C.

Other Paper Materials. A large variety of individual paper items pertaining to the B&M, its predecessors, and other New England railroads, is stored in the legal size vertical file cabinets on the north wall. These items include tourist pamphlets, tickets, newspaper clippings, locomotive and car classification books, railroad operating rulebooks, track profile charts, ICC abandonment dockets for branch lines, accident reports, annual passes, official lists of officers, agents, stations, etc. All items in this category have been cataloged and are arranged alphabetically, then numerically, by classification number. Look up the subject of interest in the blue Classification List kept near the left end of the file cabinets. Note the classification number of the desired subject. The number is composed of a decimal point, a letter, and a 4-digit number. For example, the classification number for Time tables-Employee is .T4832. The folder(s) marked .T4832 will contain material on the desired subject.

Hardware Artifacts (in storage). Because of space limitations hardware items are housed at an off-site storage area. Included in the collection are such items as steam locomotive number plates (from engines 999 and 2394), a train order hoop, a trainman's cap, a steel and enamel station sign from Passumpsic, Vt., a link and pin coupler set, a caboose marker lantern, a B&M Railroad police badge, a conductor's punch, a steam locomotive builder's plate, an old water jug for serving water to railroad coach passengers, several rail cross sections, a railroad ticket dating machine, a steam locomotive bell and whistle, etc. In the past, some of this material has been loaned to several museums for temporary exhibits, and a small portion was displayed at a B&MRRHS-sponsored show in Lexington, Mass., in the fall of 1983. Contact Jim Nigzus, 16 Adams Rd., Dracut, MA 01826, for more information.

About the Archives Committee.

Work sessions by volunteer Archives Committee members are usually held one Saturday a month at which time new acquisitions are sorted, preserved, cataloged, and added to the collection. We welcome new volunteers as well as donations of historic materials. Visitors and researchers are welcome to visit at such times and members of the Archives Committee will be available to answer questions about the collection. To be notified of the next meeting, contact the Archives Committee Chairman (see below).

Articles on the Society's Archives have appeared in the B&M Bulletin, Fall 1978, p.6; Fall 1981, pp. 8-9; and Vol. XVI No. 3 p. 3.

Who to contact for More Information.

Access to Archives at times other than during Archives Committee meetings:

Martha Mayo
Head Librarian
Center for Lowell History
Patrick Mogan Cultural Center.
40 French Street
Lowell, Mass.
(508) 934-4997 or 4998

Mailing address: 1 University Ave.
Lowell, MA 01854

Notification of Archives Committee meetings, donations of materials, comments or suggestions on this guide:

Frederick N. Nowell, III
Chairman
B&MRRHS Archives Committee
7 Johnson Rd.
Andover, MA 01810-1711

B&MRRHS Historian, questions on historical topics, locomotives and rolling stock:

Harry A. Frye
B&MRRHS Historian
14 Riverside Street
Hooksett, NH 03106

Requests to purchase copies of steam locomotive and equipment drawings:

Adrian Gintovt
P.O. Box 159
Dover, NH 03820

Researchers with specific requests for information or photographs (that are not available in the Archives) may wish to publicize their request to the Society's members through the monthly Newsletter:

Buddy Winiarz
Newsletter Editor
B&MRRHS
P.O. Box 469
Derry, NH 03038

Walker Transportation Collection, Beverly Historical Society (large photograph collection):

Richard W. Symmes
16 Frankwood Avenue
North Beverly, MA 01915

The first three editions of this guide were prepared by Richard Conard. The fourth edition was edited by Frederick N. Nowell, III. Comments and suggestions are welcome, and substantive comments will be incorporated into a revised edition of this guide.