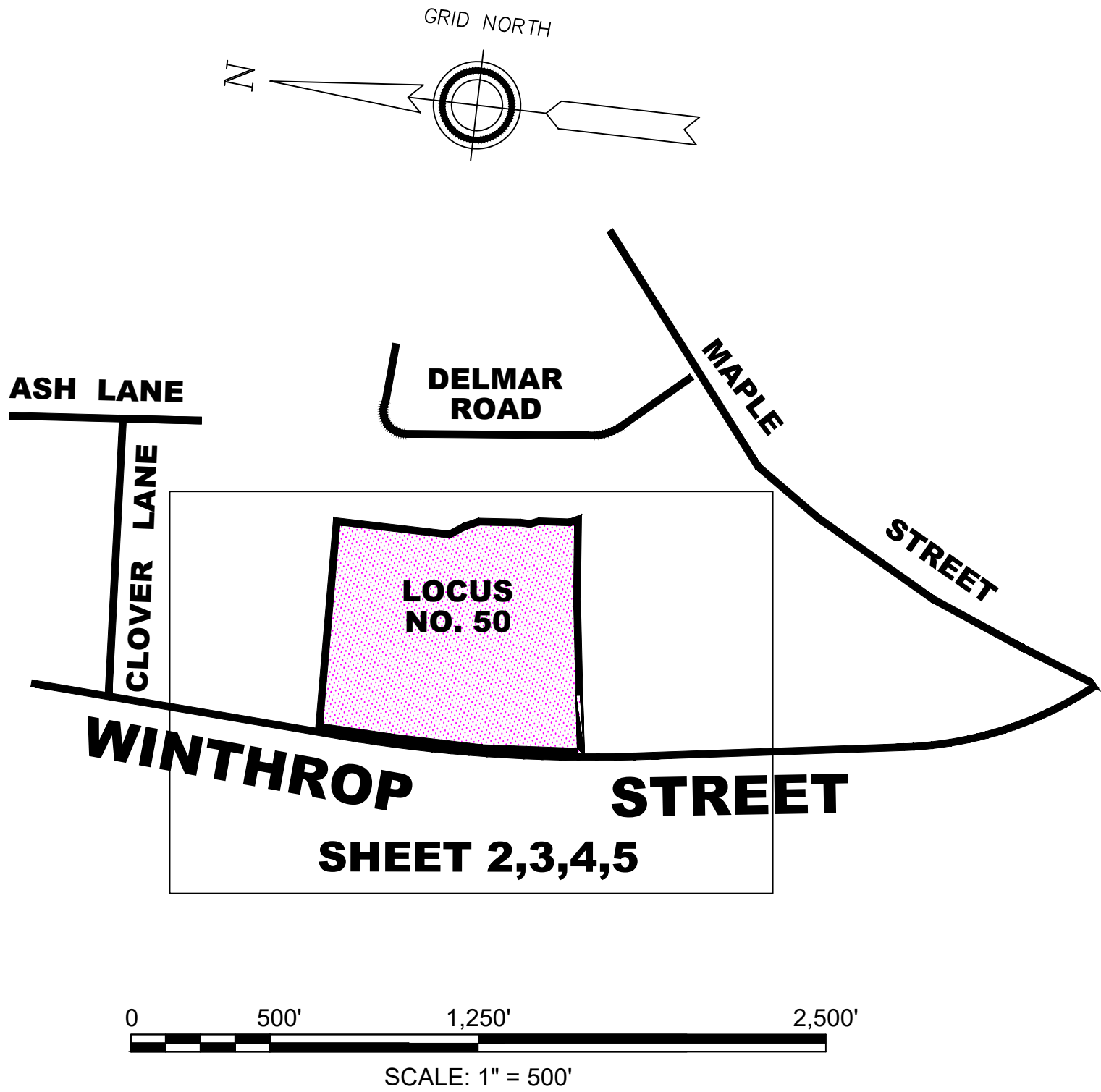


- NOTES:
1. THE LOCATION OF UTILITIES SHOWN HEREON WERE PLOTTED FROM (1) RECORD PLANS & DATA FURNISHED BY THE TOWN OF MEDWAY OR THE RESPECTIVE UTILITY OR (2) BY OBSERVATION & LOCATION IN THE FIELD OR (3) FROM DIG SAFE & UTILITY PAINT MARK OUT LOCATIONS OR (4) PLANS OF RECORD OR (5) BY MEDWAY DPW PERSONNEL FIELD LOCATIONS. LOCATIONS ARE APPROXIMATE ONLY. THE CONTRACTOR SHALL NOTIFY "DIG SAFE" AT LEAST 72 HOURS PRIOR TO ANY SITE WORK AND DETERMINE THE EXACT LOCATIONS OF UTILITIES IN THE FIELD PER MASSACHUSETTS GENERAL LAW CHAPTER 82 SECTIONS 40A - 40E, AS AMENDED. THIS PLAN MAY OR MAY NOT SHOW ALL THE UTILITIES SERVICING OR EXISTING ON THIS SITE, ABOVE GROUND OR BELOW, IN SERVICE OR ABANDONED, UNRECORDED OR OF RECORD. ANY LABEL IDENTIFYING A STRUCTURE IS BASED ON FIELD INSPECTION AND/OR AVAILABLE PLANS AND SHOULD NOT BE CONSIDERED AS A DEFINITIVE DESCRIPTION OF EITHER THE UTILITY OR USAGE OF THE STRUCTURE. WE CANNOT ASSUME RESPONSIBILITY FOR DAMAGES INCURRED AS A RESULT OF UTILITIES THAT ARE OMITTED OR INACCURATELY SHOWN ON SAID PLANS, AS SUB-SURFACE UTILITIES CANNOT BE VERIFIED. CERTAIN UTILITY INFORMATION MAY NOT BE DISCLOSED ON THIS PLAN AS THESE UTILITIES PROHIBIT DISCLOSURE OF UTILITY INFORMATION OR LOCATIONS TO THIRD PARTIES THAT HAVE NOT AGREED TO THAT UTILITY'S DISCLOSURE AGREEMENT.
 2. THIS PLAN DOES NOT SHOW ANY UNRECORDED OR UNWRITTEN AGREEMENT(S), LICENSE(S), EASEMENT(S) THAT MAY EXIST. A REASONABLE AND DILIGENT ATTEMPT HAS BEEN MADE TO OBSERVE ANY APPARENT VISIBLE USE OF THE LAND; HOWEVER, THIS DOES NOT CONSTITUTE A GUARANTEE THAT NO SUCH AGREEMENT(S), LICENSE(S), EASEMENT(S) EXIST. THE LOCUS PROPERTY SURVEYED AND DEPICTED HEREON MAY BE SUBJECT TO RIGHTS AND EASEMENTS AS CONTAINED IN VARIOUS INSTRUMENTS OF RECORD THAT MAY BE RECORDED AND/OR UNRECORDED DESCRIBING THE SUBJECT PROPERTY AND OTHER PROPERTIES. TO THE EXTENT THAT SUCH RIGHTS OR EASEMENTS EXIST, THEIR LOCATION AND EXTENT ARE NOT KNOWN AT THIS TIME. THE TOWN OF MEDWAY HAS SUPPLIED TITLE RESEARCH GOING BACK 100 YEARS, BUT NOT A TITLE REPORT. THE TITLE RESEARCH DID NOT REFERENCE ANY MILL, WATERWAY, FLOWAGE AND/OR FLOODING RIGHTS THAT MAY EXIST ALONG CHICKEN BROOK FROM WHEN THERE WAS A MILL LOCATED DOWNSTREAM ALONG CHICKEN BROOK; HOWEVER, THIS DOES NOT CONSTITUTE A GUARANTEE THAT NO SUCH AGREEMENT(S), LICENSE(S), EASEMENT(S) EXIST. THE CURRENT DAM IS LOCATED SOUTHERLY ALONG CHICKEN BROOK FROM THE LOCUS PROPERTY.
 3. THE CERTIFICATION(S) SHOWN HEREON ARE INTENDED TO MEET MUNICIPAL REQUIREMENTS AND ARE NOT A CERTIFICATION TO TITLE OR OWNERSHIP OF PROPERTY SHOWN. OWNERS OF LOCUS AND ADJOINING PROPERTIES ARE ACCORDING TO CURRENT ASSESSOR'S RECORDS. THE LOCUS DEED DESCRIPTION OF THE EASTERLY BOUNDARY LINE REFERS TO A CALL HEADING NORTHERLY AS THE FENCE AND WALL, NOW STANDING, LAND N/W/6 OF BLUMH AND GOLDBERG, DUE THE ELEVATED WATER LEVEL FROM THE BEAVER DAM, RETRACEMENT OF EVIDENCE OF THE FENCE OR WALL LOCATION THAT DEFINE THE BOUNDARY LINE ACROSS THE CHICKEN BROOK CANNOT BE PERFORMED AND A SURVEY TIE LINE (THE SURVEY TIE LINE HAS BEEN USED FOR MATHEMATICAL LOT CLOSURE) HAS BEEN DEPICTED.
 4. THIS PLAN WAS PREPARED USING THE FOLLOWING SURVEYING METHODS, ROBOTIC TOTAL STATION (LEICA TS 16), DIFFERENTIAL LEVELING (LEICA GS 15), RTK GPS (LEICA GS16, SMARTNET RTK NETWORK CORRECTION), STATIC GPS (LEICA GS12) AND OPUS SOLUTIONS.
 5. VERTICAL DATUM: ELEVATIONS ARE BASED ON NAVD 88, US SURVEY FEET.
 6. HORIZONTAL DATUM: MA MAINLAND NAD83 (GRID NORTH, US SURVEY FEET) MASS STATE PLANE GRID COORDINATES FROM STATIC GPS AND NGS OPUS SOLUTIONS.
 7. THIS PLAN WAS PREPARED BY THE COUNTY OF NORFOLK UNDER THE AGREED UPON SCOPE OF SERVICES TO PROVIDE A TOPOGRAPHIC BASE MAP TO THE MEDWAY COMMUNITY FARM TO BE USED FOR A CONSERVATION FARM PLAN AND FOR THE DESIGN AND PERMITTING OF PROPOSED FUTURE IMPROVEMENTS. ANY USE OR REUSE OF THIS WORK PRODUCT BY ANY ENTITY UNRELATED TO THE ORIGINAL SCOPE OF SERVICES SHALL BE AT THE ENTITIES SOLE AND EXCLUSIVE RISK AND LIABILITY.
 8. THIS PLAN IS THE ORIGINAL WORK OF THE NORFOLK COUNTY ENGINEERING DEPARTMENT. IT IS A VIOLATION OF THE LAW FOR ANYONE TO REPRESENT THIS PLAN AS THEIR OWN ORIGINAL WORK, WITH OR WITHOUT EDITING. IT IS A VIOLATION OF THE LAW TO EDIT THIS PLAN AND CONTINUE TO REPRESENT IT AS THE ORIGINAL WORK OF THE NORFOLK COUNTY ENGINEERING DEPARTMENT.
 9. THIS PLAN WAS PREPARED IN ACCORDANCE WITH 250 CMR 6.00 LAND SURVEYING PROCEDURES AND STANDARDS.
 10. THE CURRENT EFFECTIVE FEDERAL EMERGENCY MANAGEMENT AGENCY (FEMA) FLOOD INSURANCE RATE MAPS (FIRM) IS PANEL NUMBER 25021C0141E WITH AN EFFECTIVE DATE OF JULY 17, 2012. THE MEDWAY COMMUNITY FARM SITE IS LISTED AS ZONE AE DETERMINED ALONG THE CHICKEN BROOK. REFERENCE IS MADE TO THE FEMA COMMUNITY #250243 MEDWAY FLOOD INSURANCE STUDY (FIS) #25021CV005E FLOOD PROFILE REVISED PRELIMINARY (DATED: 4/7/2023) FOR CHICKEN BROOK PROFILE SEE PAGE 062P CROSS SECTIONS AA THROUGH AD. THE ELEVATION OF THE 100 YEAR STORM IS DEPICTED & LISTED ALONG THE CENTERLINE STATIONING OF CHICKEN BROOK. THE ELEVATION OF THE 100 YEAR STORM HAS BEEN INTERPOLATED FROM THE PROFILE SHEET IN RELATION TO THE CENTERLINE STATIONING ALONG CHICKEN BROOK. THE 100 YEAR STORM 1% CHANCE OF FLOOD WAS APPROXIMATELY DRAFTED USING A MAGENTA POLYLINE TO DEPICT THE LOCATION OF THE ESTIMATED 100 YEAR STORM FLOODING AS DEPICTED THROUGH THE CROSS-SECTIONS AD THROUGH AA ON THE PROFILE SHEET.
 11. THE WETLAND BOUNDARY DELINEATION AND TOP OF BANK DELINEATION WERE PERFORMED BY DANIEL O'DRISCOLL, PLS, OF O'DRISCOLL LAND SURVEYING IN 2024.
 12. THE LIGHT BLUE POLY-LINE DRAWN ALONG CHICKEN BROOK DEPICTS THE ESTIMATED STREAM CHANNEL AS DIGITIZED FROM THE 2008 MASSGIS DIGITAL ORTHO AERIAL IMAGERY (NOT CURRENTLY ABLE LOCATE THE CHANNEL DUE TO ELEVATED WATER LEVEL UPSTREAM OF THE BEAVER DAM).
 13. THE DARK BLUE POLY-LINE DRAWN ALONG THE CHICKEN BROOK DEPICTS THE ESTIMATED LOWEST FIRST BREAK IN SLOPE FROM THE STREAM CHANNEL BASED ON A COMBINATION OF SPOT GRADES AND THE ESTIMATED TOP OF BANK FROM THE 2008 MASSGIS DIGITAL ORTHO AERIAL IMAGERY (NOT ABLE TO DELINEATE RIVER FRONT BANK DUE TO THE ELEVATED WATER LEVEL UPSTREAM OF THE BEAVER DAM).
 14. THE TOPOGRAPHIC PLAN SET HAS BEEN PLOTTED AS A SERIES OF FOUR PLANS, 1) DEPICTS THE TOPOGRAPHIC PLAN, 2) DEPICTS THE TOPOGRAPHIC PLAN OVERLAID OVER THE 2008 MASSGIS DIGITAL ORTHO AERIAL IMAGERY, 3) DEPICTS THE TOPOGRAPHIC PLAN OVERLAID OVER THE 2023 MASSGIS DIGITAL ORTHO AERIAL IMAGERY, AND 4) TOPOGRAPHIC PLAN WITH PROPOSED STRUCTURES.
 15. SUBJECT PROPERTY IS LOCATED IN ZONE, AGRICULTURAL RESIDENCE. (AR-1)



TOPOGRAPHIC PLAN MEDWAY COMMUNITY FARM

50 WINTHROP STREET
MEDWAY, MA

JANUARY 8, 2025

PREPARED FOR:
TOWN OF MEDWAY

PREPARED BY:
NORFOLK COUNTY ENGINEERING DEPARTMENT
649 HIGH STREET, DEDHAM, MA 02026
(781)461-6128

MEDWAY COMMUNITY FARM
PROFESSIONAL LAND SURVEYOR

DATE:

AB	ASPHALT BERM
BD	BOUND
BIT	BITUMINOUS
℄	BASELINE
BLDG	BUILDING
BM	BENCHMARK
BR	BRIDGE
BRK	BRICK
BWL	BROKEN WHITE LINE
BYL	BROKEN YELLOW LINE
CAB	CABINET
CB	CATCH BASIN
CC	CEMENT CONCRETE
CCB	CAPE COD BERM
CEN	CENTER
CI	CURB INLET
CIP	CAST IRON PIPE
℄	CENTER LINE
CLF	CHAIN LINK FENCE
CMH	CABLE MANHOLE
CMP	CORRUGATED METAL PIPE
CO	COUNTY
CO BD	COUNTY BOUND
CON	CONIFEROUS
CONC	CONCRETE
CPP	CORRUGATED PLASTIC PIPE
CSP	CORRUGATED STEEL PIPE
CULV	CULVERT
CW	CROSSWALK
DBWL	DOUBLE WHITE LINE
DBYL	DOUBLE YELLOW LINE
DEC	DECIDUOUS
DH	DRILL HOLE
DI	DROP INLET
DIA	DIAMETER
DIP	DUCTILE IRON PIPE
DMH	DRAIN MANHOLE
DSK	DISK
DWL	DOTTED WHITE LINE
DYL	DOTTED YELLOW LINE
EB	EASTBOUND
EL	ELEVATION
EMH	ELECTRIC MANHOLE
EP	EDGE OF PAVEMENT
EPLP	ESCUTCHEON PIN IN LEAD PLUG
ETW	EDGE OF TRAVELED WAY
EX	EXISTING
FF	FINISH FLOOR
FGS	FLAGSTONE
FL	FLOWLINE
FLDSTN	FIELDSTONE
GAR	GARAGE
GC	GRANITE CURB
GIP	GALVANIZED IRON PIPE

GMH	GAS MANHOLE
GRAN	GRANITE
GRAV	GRAVEL
GRD	GUARD
GRL	GUARDRAIL
HDW	HEADWALL
HYD	HYDRANT
INV	INVERT
IP	IRON PIPE
JB	JERSEY BARRIER
L	LENGTH OF CURVE
LB	LEACHING BASIN
LC	LAND COURT
LCB	LAND COURT BOUND
LCD	LAND COURT DISK
LO	LAYOUT
LP	LIGHT POLE
LPD	LIGHT POLE DOUBLE LIGHT
LSA	LANDSCAPED AREA
MAG	MAG NAIL
MBE	MIDDLE BACK EDGE
MED	MEDIAN
MH	MANHOLE
MP	MILE POST
MTL	METAL
N/F	NOW OR FORMERLY
NB	NORTHBOUND
OH	OVERHANG
OHW	OVERHEAD WIRE
PC	POINT OF CURVATURE
PCC	POINT OF COMPOUND CURVATURE
PED	PEDESTRIAN
PI	POINT OF INTERSECTION
PK	PK NAIL
℄	PROPERTY LINE
PP	PRICK PUNCH
PRC	POINT OF REVERSE CURVATURE
PT	POINT OF TANGENCY
PVC	POLYVINYL CHLORIDE PIPE
PVMT	PAVEMENT
PWW	PAVED WATERWAY
PZ	PIEZOMETER
R	RADIUS OF CURVATURE
RB	REBAR
RC	REINFORCED CONCRETE
RCP	REINFORCED CONCRETE PIPE
RET	RETAINING
ROW	RIGHT OF WAY
RR	RAILROAD
RRS	RAILROAD SPIKE
S BD	SOUTHBOUND
SB	STONE BOUND
SD	SUBDRAIN
SGE	SLOPED GRANITE EDGING

SHLD	SHOULDER
SHLO	STATE HIGHWAY LAYOUT
SK	SKEW
SL	STOP LINE
SMH	SEWER MANHOLE
SPK	SPIKE
STA	STATION
STN	STONE
SW	SIDEWALK
SWL	SOLID WHITE LINE
SYL	SOLID YELLOW LINE
T	TANGENT DISTANCE
TAN	TANGENT
TEMP	TEMPORARY
TMH	TELEPHONE MANHOLE
TR	TOP OF RAIL
TSC	TRAFFIC SIGNAL CONDUIT
TYP	TYPICAL
VAR	VARIABLE
VCP	VITRIFIED CLAY PIPE
VGC	VERTICAL GRANITE CURB
VL	VAULT
WB	WESTBOUND
WCR	WHEELCHAIR RAMP
WD	WOOD
MSBD	STONE BOUND W/ DRILL HOLE
MDHL	DRILL HOLE
MREB	REBAR
MIPE	IRON PIPE
WIP	WROUGHT IRON PIPE
MMON	MONUMENT

● BF#	BANK FLAG
● BHL#	BORE HOLE
⊙	BUSH
⬢ BM#	BENCHMARK
□	BOUND (CONC, STONE, LAND COURT, ETC.)
⊙	CABLE MANHOLE
□ CB	CATCH BASIN - SQUARE
□ CB	CATCH BASIN - D-FRAME
○ CB	CATCH BASIN - ROUND
● DSK	DISK (CA/T, USC&GS, LAND COURT, ETC.)
● DH	DRILL HOLE
⊙	DRAIN MANHOLE
□ EHH	ELECTRIC HANDHOLE
⊙	ELECTRIC MANHOLE
⊙ EM	ELECTRIC METER
● EPLP	ESCUTCHEON PIN IN LEAD PLUG
⊙ FB	FLASHING BEACON
△ FES	FLARED END SECTION
● FP	FLAG POLE
○ GF	GAS FILL
○ GG	GAS GATE
⊙ GM	GAS METER
⊙ GP	GAS PUMP
⊙	GAS MANHOLE
○ GPL	GUY POLE
⊙	HANDICAP SYMBOL
—	GUY WIRE ANCHOR
○ HTP	HIGH TENSION POWER POLE
⊙	FIRE HYDRANT
○ IP	IRON PIPE
⊙	LIGHT POLE
⊙	LIGHT POLE DOUBLE LIGHT

○ MAG	MAG NAIL
□ MB	MAIL BOX
■ MHB	MASSACHUSETTS HIGHWAY BOUND
⊙ MW	MONITORING WELL
○ OIL	OIL FILL
⊙	OTHER MANHOLE
□ PB	PULL BOX
⊙ PED	PEDESTRIAN SIGNAL
△	PHOTO CONTROL - H & V
△	PHOTO CONTROL - V ONLY
● PK	PK NAIL
○ PM	PARKING METER
○ POST	CIRCULAR POST
□ POST	SQUARE POST
● RB	REBAR/IRON PIN
⊙ RRS	RAILROAD SPIKE
⊙ RRS	RAILROAD SIGNAL
⊙ RRSW	RAILROAD SWITCH
⊙ SN	STAKE AND NAIL
○ SP	STAND PIPE
⊙	SEWER MANHOLE
⊙	STEAM MANHOLE
○	STUMP
■ TB	TOWN LINE BOUND (CORNER)
⊙ TCB	TRAFFIC SIGNAL CONTROL CABINET
⊙	TELEPHONE MANHOLE
⊙ TFMR	TRANSFORMER
⊙ TLRS	TOWN LINE ROAD STONE
⊙ TPIT#	TEST PIT
○ TPL	TROLLEY POLE
△	TRAVERSE POINT
● 22" M	TREE

⊙ TS	TRAFFIC SIGNAL
○ TS	TRAFFIC SIGNAL MAST ARM/SPAN WIRE POLE
⊙	SIGN
⊙	SIGN - DOUBLE POST
⊙ UFB#	UTILITY POLE W/ FIRE PULL BOX
⊙ ULT#	UTILITY POLE W/ LIGHT
⊙ UPDL#	UTILITY POLE W/ DOUBLE LIGHT
○ UPL#	UTILITY POLE
○ VP	VENT PIPE
⊙	WATER MANHOLE
⊙ WG	WATER GATE
⊙ WM	WATER METER
○ WSO	WATER SHUTOFF
⊙ WELL	WELL (POTABLE)
● WF#	WETLAND FLAG
	OVERHEAD WIRE
	DRAIN LINE
	SEWER LINE
	ELECTRIC LINE
	WATER LINE