

ABBREVIATIONS

AB	ASPHALT BERM
BD	BOUND
BIT	BITUMINOUS
BL	BASELINE
BLDG	BUILDING
BM	BENCHMARK
BR	BRIDGE
BRK	BRICK
BWL	BROKEN WHITE LINE
BYL	BROKEN YELLOW LINE
CAB	CABINET
CB	CATCH BASIN
CC	CEMENT CONCRETE
CCB	CAPE COD BERM
CEN	CENTER
CI	CURB INLET
CIP	CAST IRON PIPE
CL	CENTER LINE
CLF	CHAIN LINK FENCE
CMH	CABLE MANHOLE
CMP	CORRUGATED METAL PIPE
CO	COUNTY
CO BD	COUNTY BOUND
CON	CONIFEROUS
CONC	CONCRETE
CPP	CORRUGATED PLASTIC PIPE
CSP	CORRUGATED STEEL PIPE
CULV	CULVERT
CW	CROSSWALK
DBWL	DOUBLE WHITE LINE
DBYL	DOUBLE YELLOW LINE
DEC	DECIDUOUS
DH	DRILL HOLE
DI	DROP INLET
DIA	DIAMETER
DIP	DUCTILE IRON PIPE
DMH	DRAIN MANHOLE
DSK	DISK
DWL	DOTTED WHITE LINE
DYL	DOTTED YELLOW LINE
EB	EASTBOUND
EL	ELEVATION
EMH	ELECTRIC MANHOLE
EP	EDGE OF PAVEMENT
EPLP	ESCUTCHEON PIN IN LEAD PLUG
ETW	EDGE OF TRAVELED WAY
EX	EXISTING
FF	FINISH FLOOR
FGS	FLAGSTONE
FL	FLOWLINE
FLDSTN	FIELDSTONE
GAR	GARAGE
GC	GRANITE CURB
GIP	GALVANIZED IRON PIPE

GMH	GAS MANHOLE
GRAN	GRANITE
GRAV	GRAVEL
GRD	GUARD
GRL	GUARDRAIL
HDW	HEADWALL
HYD	HYDRANT
INV	INVERT
IP	IRON PIPE
JB	JERSEY BARRIER
L	LENGTH OF CURVE
LB	LEACHING BASIN
LC	LAND COURT
LCB	LAND COURT BOUND
LCD	LAND COURT DISK
LO	LAYOUT
LP	LIGHT POLE
LPD	LIGHT POLE DOUBLE LIGHT
LSA	LANDSCAPED AREA
MAG	MAG NAIL
MBE	MIDDLE BACK EDGE
MED	MEDIAN
MH	MANHOLE
MP	MILE POST
CON	CONIFEROUS
MTL	METAL
N/F	NOW OR FORMERLY
NB	NORTHBOUND
OH	OVERHANG
OHW	OVERHEAD WIRE
PC	POINT OF CURVATURE
PCC	POINT OF COMPOUND CURVATURE
PED	PEDESTRIAN
PI	POINT OF INTERSECTION
PK	PK NAIL
PL	PROPERTY LINE
PP	PRICK PUNCH
PRC	POINT OF REVERSE CURVATURE
PT	POINT OF TANGENCY
PVC	POLYVINYL CHLORIDE PIPE
PVMT	PAVEMENT
PWW	PAVED WATERWAY
PZ	PIEZOMETER
R	RADIUS OF CURVATURE
RB	REBAR
RC	REINFORCED CONCRETE
RCP	REINFORCED CONCRETE PIPE
RET	RETAINING
ROW	RIGHT OF WAY
RR	RAILROAD
RRS	RAILROAD SPIKE
S BD	SOUTHBOUND
SB	STONE BOUND
SD	SUBDRAIN
SGE	SLOPED GRANITE EDGING

SHLD	SHOULDER
SHLO	STATE HIGHWAY LAYOUT
SK	SKEW
SL	STOP LINE
SMH	SEWER MANHOLE
SPK	SPIKE
STA	STATION
STN	STONE
SW	SIDEWALK
SWL	SOLID WHITE LINE
SYL	SOLID YELLOW LINE
T	TANGENT DISTANCE
TAN	TANGENT
TEMP	TEMPORARY
TMH	TELEPHONE MANHOLE
TR	TOP OF RAIL
TSC	TRAFFIC SIGNAL CONDUIT
TYP	TYPICAL
VAR	VARIABLE
VCP	VITRIFIED CLAY PIPE
VGC	VERTICAL GRANITE CURB
VL	VAULT
WB	WESTBOUND
WCR	WHEELCHAIR RAMP
WD	WOOD
MSBD	STONE BOUND W/DRILL HOLE
MDHL	DRILL HOLE
MREB	REBAR
MIPE	IRON PIPE
WIP	WROUGHT IRON PIPE
MMON	MONUMENT

BF#	BANK FLAG
BHL#	BORE HOLE
BUSH	BUSH
BM#	BENCHMARK
BOUND	BOUND (CONC, STONE, LAND COURT, ETC.)
CB	CATCH BASIN
CB	CATCH BASIN - SQUARE
CB	CATCH BASIN - D-FRAME
CB	CATCH BASIN - ROUND
DSK	DISK (CA/T, USC&GS, LAND COURT, ETC.)
DH	DRILL HOLE
DMH	DRAIN MANHOLE
EHH	ELECTRIC HANDHOLE
EM	ELECTRIC METER
EPLP	ESCUTCHEON PIN IN LEAD PLUG
FB	FLASHING BEACON
FES	FLARED END SECTION
FP	FLAG POLE
GF	GAS FILL
GG	GAS GATE
GM	GAS METER
GP	GAS PUMP
GMH	GAS MANHOLE
GPL	GUY POLE
HANDICAP	HANDICAP SYMBOL
GUY WIRE	GUY WIRE ANCHOR
HTP	HIGH TENSION POWER POLE
FIRE HYDRANT	FIRE HYDRANT
IP	IRON PIPE
LIGHT POLE	LIGHT POLE
LPD	LIGHT POLE DOUBLE LIGHT

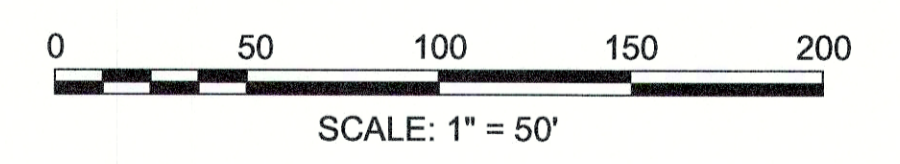
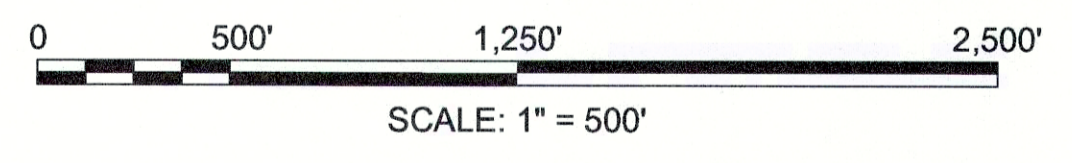
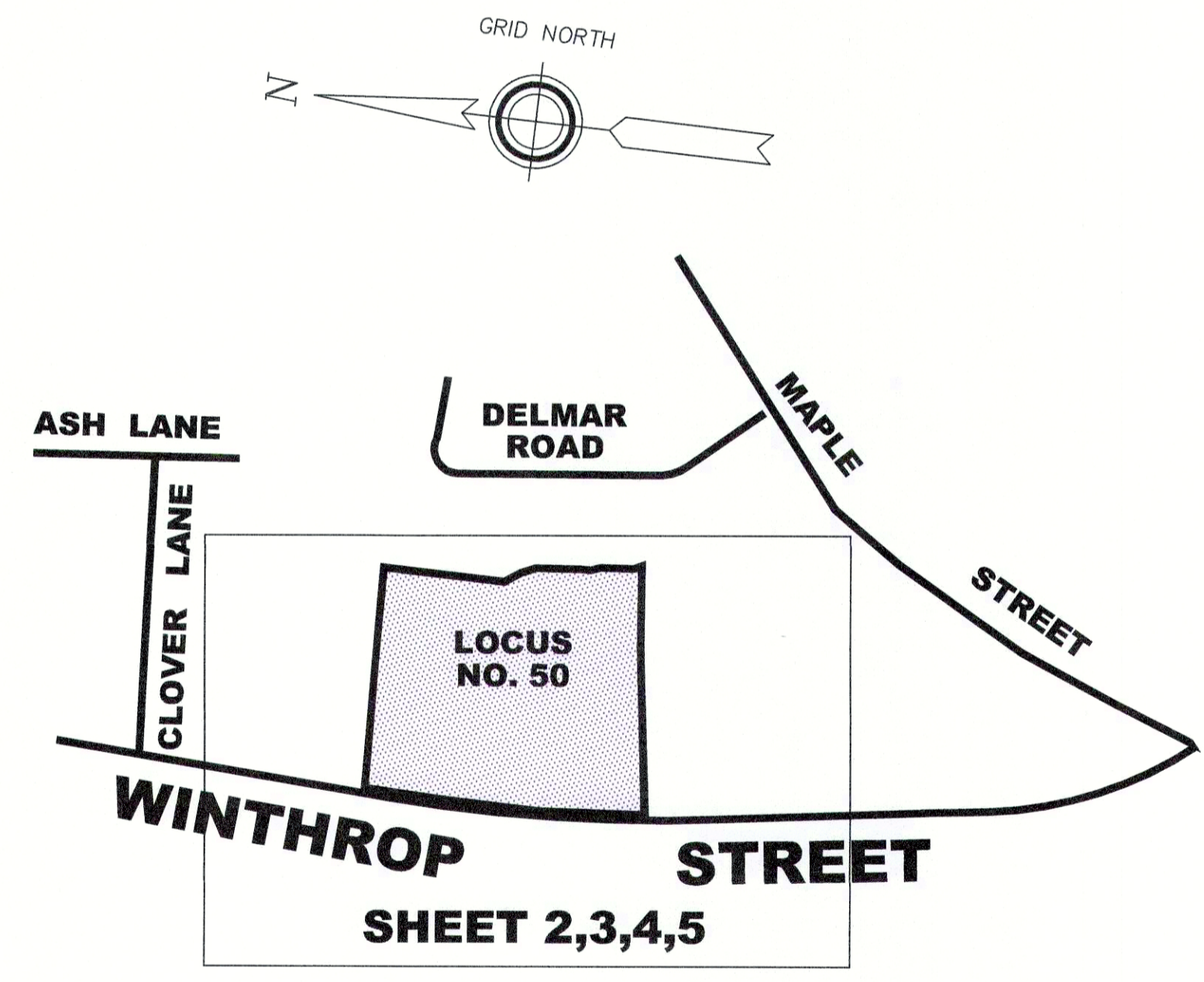
LEGEND

MAG	MAG NAIL
MB	MAIL BOX
MHB	MASSACHUSETTS HIGHWAY BOUND
MW	MONITORING WELL
OIL	OIL FILL
OTHER	OTHER MANHOLE
PB	PULL BOX
PED	PEDESTRIAN SIGNAL
PHOTO	PHOTO CONTROL - H & V
PHOTO	PHOTO CONTROL - V ONLY
PK	PK NAIL
PM	PARKING METER
POST	CIRCULAR POST
POST	SQUARE POST
RB	REBAR/IRON PIN
RRS	RAILROAD SPIKE
RRSG	RAILROAD SIGNAL
RRSW	RAILROAD SWITCH
SN	STAKE AND NAIL
SP	STAND PIPE
SEWER	SEWER MANHOLE
STEAM	STEAM MANHOLE
STUMP	STUMP
TB	TOWN LINE BOUND (CORNER)
TCB	TRAFFIC SIGNAL CONTROL CABINET
TELEPHONE	TELEPHONE MANHOLE
TFMR	TRANSFORMER
TLRS	TOWN LINE ROAD STONE
TPIT#	TEST PIT
TPL	TROLLEY POLE
TRVERSE	TRVERSE POINT
22'M	TREE

TS	TRAFFIC SIGNAL
TS	TRAFFIC SIGNAL MAST ARM/SPAN WIRE POLE
SIGN	SIGN
SIGN	SIGN - DOUBLE POST
UFB#	UTILITY POLE W/ FIRE PULL BOX
ULT#	UTILITY POLE W/ LIGHT
UPDL#	UTILITY POLE W/ DOUBLE LIGHT
UTILITY	UTILITY POLE
VP	VENT PIPE
WMH	WATER MANHOLE
WG	WATER GATE
WM	WATER METER
WSO	WATER SHUTOFF
WELL	WELL (POTABLE)
WF#	WETLAND FLAG
OVERHEAD	OVERHEAD WIRE
DRAIN	DRAIN LINE
SEWER	SEWER LINE
ELECTRIC	ELECTRIC LINE
WATER	WATER LINE

NOTES:

- THE LOCATION OF UTILITIES SHOWN HEREON WERE PLOTTED FROM (1) RECORD PLANS & DATA FURNISHED BY THE TOWN OF MEDWAY OR THE RESPECTIVE UTILITY OR (2) BY OBSERVATION & LOCATION IN THE FIELD OR (3) FROM DIG SAFE & UTILITY PAINT MARK OUT LOCATIONS OR (4) PLANS OF RECORD OR (5) BY MEDWAY DPW PERSONNEL FIELD LOCATIONS. LOCATIONS ARE APPROXIMATE ONLY. THE CONTRACTOR SHALL NOTIFY "DIG SAFE" AT LEAST 72 HOURS PRIOR TO ANY SITE WORK AND DETERMINE THE EXACT LOCATIONS OF UTILITIES IN THE FIELD PER MASSACHUSETTS GENERAL LAW CHAPTER 82 SECTIONS 40A - 40E, AS AMENDED. THIS PLAN MAY OR MAY NOT SHOW ALL THE UTILITIES SERVING OR EXISTING ON THIS SITE; ABOVE GROUND OR BELOW, IN SERVICE OR ABANDONED, UNRECORDED OR OF RECORD. ANY LABEL IDENTIFYING A STRUCTURE IS BASED ON FIELD INSPECTION AND/OR AVAILABLE PLANS AND SHOULD NOT BE CONSIDERED AS A DEFINITIVE DESCRIPTION OF EITHER THE UTILITY OR USAGE OF THE STRUCTURE. WE CANNOT ASSUME RESPONSIBILITY FOR DAMAGES INCURRED AS A RESULT OF UTILITIES THAT ARE OMITTED OR INACCURATELY SHOWN ON SAID PLANS, AS SUB-SURFACE UTILITIES CANNOT BE VERIFIED. CERTAIN UTILITY INFORMATION MAY NOT BE DISCLOSED ON THIS PLAN AS THESE UTILITIES PROHIBIT DISCLOSURE OF UTILITY INFORMATION OR LOCATIONS TO THIRD PARTIES THAT HAVE NOT AGREED TO THAT UTILITY'S DISCLOSURE AGREEMENT.
- THIS PLAN DOES NOT SHOW ANY UNRECORDED OR UNWRITTEN AGREEMENT(S), LICENSE(S), EASEMENT(S) THAT MAY EXIST. A REASONABLE AND DILIGENT ATTEMPT HAS BEEN MADE TO OBSERVE ANY APPARENT VISIBLE USE OF THE LAND; HOWEVER, THIS DOES NOT CONSTITUTE A GUARANTEE THAT NO SUCH AGREEMENT(S), LICENSE(S), EASEMENT(S) EXIST. THE LOCUS PROPERTY SURVEYED AND DEPICTED HEREON MAY BE SUBJECT TO RIGHTS AND EASEMENTS AS CONTAINED IN VARIOUS INSTRUMENTS OF RECORD THAT MAY BE RECORDED AND/OR UNRECORDED DESCRIBING THE SUBJECT PROPERTY AND OTHER PROPERTIES. TO THE EXTENT THAT SUCH RIGHTS OR EASEMENTS EXIST, THEIR LOCATION AND EXTENT ARE NOT KNOWN AT THIS TIME. THE TOWN OF MEDWAY HAS SUPPLIED TITLE RESEARCH GOING BACK 100 YEARS, BUT NOT A TITLE REPORT. THE TITLE RESEARCH DID NOT REFERENCE ANY MILL, WATERWAY, FLOWAGE AND/OR FLOODING RIGHTS THAT MAY EXIST ALONG CHICKEN BROOK FROM WHEN THERE WAS A MILL LOCATED DOWNSTREAM ALONG CHICKEN BROOK; HOWEVER, THIS DOES NOT CONSTITUTE A GUARANTEE THAT NO SUCH AGREEMENT(S), LICENSE(S), EASEMENT(S) EXIST. THE CURRENT DAM IS LOCATED SOUTHERLY ALONG CHICKEN BROOK FROM THE LOCUS PROPERTY.
- THE CERTIFICATION(S) SHOWN HEREON ARE INTENDED TO MEET MUNICIPAL REQUIREMENTS AND ARE NOT A CERTIFICATION TO TITLE OR OWNERSHIP OF PROPERTY SHOWN. OWNERS OF LOCUS AND ADJOINING PROPERTIES ARE ACCORDING TO CURRENT ASSESSOR'S RECORDS. THE LOCUS DEED DESCRIPTION OF THE EASTERLY BOUNDARY LINE REFERS TO A CALL HEADING NORTHERLY AS THE FENCE AND WALL NOW STAND TO LAND N/F OF BLUHM AND GOLDBERG, DUE TO THE ELEVATED WATER LEVEL FROM THE BEAVER DAM, RETRACEMENT OF EVIDENCE OF THE FENCE OR WALL LOCATION THAT DEFINE THE BOUNDARY LINE ACROSS THE CHICKEN BROOK CANNOT BE PERFORMED AND A SURVEY TIE LINE (THE SURVEY TIE LINE HAS BEEN USED FOR MATHEMATICAL LOT CLOSURE) HAS BEEN DEPICTED.
- THIS PLAN WAS PREPARED USING THE FOLLOWING SURVEYING METHODS, ROBOTIC TOTAL STATION (LEICA TS 15), DIFFERENTIAL LEVELING (LEICA LS 15), RTK GPS (LEICA GS16, SMARTNET RTK NETWORK CORRECTION), STATIC GPS (LEICA GS12) AND OPUS SOLUTIONS.
- VERTICAL DATUM: ELEVATIONS ARE BASED ON NAVD 88 US SURVEY FEET.
- HORIZONTAL DATUM: MA MAINLAND NAD83 (GRID NORTH, US SURVEY FEET) MASS STATE PLANE GRID COORDINATES FROM STATIC GPS AND NGS OPUS SOLUTIONS.
- THIS PLAN WAS PREPARED BY THE COUNTY OF NORFOLK UNDER THE AGREED UPON SCOPE OF SERVICES TO PROVIDE A TOPOGRAPHIC BASE MAP TO THE MEDWAY COMMUNITY FARM TO BE USED FOR A CONSERVATION FARM PLAN AND FOR THE DESIGN AND PERMITTING OF PROPOSED FUTURE IMPROVEMENTS. ANY USE OR REUSE OF THIS WORK PRODUCT BY ANY ENTITY UNRELATED TO THE ORIGINAL SCOPE OF SERVICES SHALL BE AT THE ENTITIES SOLE AND EXCLUSIVE RISK AND LIABILITY.
- THIS PLAN IS THE ORIGINAL WORK OF THE NORFOLK COUNTY ENGINEERING DEPARTMENT. IT IS A VIOLATION OF THE LAW FOR ANYONE TO REPRESENT THIS PLAN AS THEIR OWN ORIGINAL WORK, WITH OR WITHOUT EDITING. IT IS A VIOLATION OF THE LAW TO EDIT THIS PLAN AND CONTINUE TO REPRESENT IT AS THE ORIGINAL WORK OF THE NORFOLK COUNTY ENGINEERING DEPARTMENT.
- THIS PLAN WAS PREPARED IN ACCORDANCE WITH 250 CMR 6.00 LAND SURVEYING PROCEDURES AND STANDARDS.
- THE CURRENT EFFECTIVE FEDERAL EMERGENCY MANAGEMENT AGENCY (FEMA) FLOOD INSURANCE RATE MAPS (FIRM) IS PANEL NUMBER 25021C0141E WITH AN EFFECTIVE DATE OF JULY 17, 2012. THE MEDWAY COMMUNITY FARM SITE IS LISTED AS ZONE AE DETERMINED ALONG THE CHICKEN BROOK. REFERENCE IS MADE TO THE FEMA COMMUNITY #250243 MEDWAY FLOOD INSURANCE STUDY (FIS) #25021C005E FLOOD PROFILE REVISED PRELIMINARY (DATED: 4/7/2023) FOR CHICKEN BROOK PROFILE SEE PAGE 062P CROSS SECTIONS AA THROUGH AD. THE ELEVATION OF THE 100 YEAR STORM IS DEPICTED & LISTED ALONG THE CENTERLINE STATIONING OF CHICKEN BROOK. THE ELEVATION OF THE 100 YEAR STORM HAS BEEN INTERPOLATED FROM THE PROFILE SHEET IN RELATION TO THE CENTERLINE STATIONING ALONG CHICKEN BROOK. THE 100 YEAR STORM 1% CHANGE OF FLOOD WAS APPROXIMATELY DRAFTED USING A MAGENTA POLYLINE TO DEPICT THE LOCATION OF THE ESTIMATED 100 YEAR STORM FLOODING AS DEPICTED THROUGH THE CROSS-SECTIONS AA THROUGH AA ON THE PROFILE SHEET.
- THE WETLAND BOUNDARY DELINEATION AND TOP OF BANK DELINEATION WERE PERFORMED BY DANIEL O'DRISCOLL, PLS, OF O'DRISCOLL LAND SURVEYING IN 2024.
- THE LIGHT BLUE POLY-LINE DRAWN ALONG CHICKEN BROOK DEPICTS THE ESTIMATED STREAM CHANNEL AS DIGITIZED FROM THE 2008 MASSGIS DIGITAL ORTHO AERIAL IMAGERY (NOT CURRENTLY ABLE TO LOCATE THE CHANNEL DUE TO ELEVATED WATER LEVEL UPSTREAM OF THE BEAVER DAM).
- THE DARK BLUE POLY-LINE DRAWN ALONG THE CHICKEN BROOK DEPICTS THE ESTIMATED LOWEST FIRST BREAK IN SLOPE FROM THE STREAM CHANNEL BASED ON A COMBINATION OF SPOT GRADES AND THE ESTIMATED TOP OF BANK FROM THE 2008 MASSGIS DIGITAL ORTHO AERIAL IMAGERY (NOT ABLE TO DELINEATE RIVER FRONT BANK DUE TO THE ELEVATED WATER LEVEL UPSTREAM OF THE BEAVER DAM).
- THE TOPOGRAPHIC PLAN SET HAS BEEN PLOTTED AS A SERIES OF FOUR PLANS, 1) DEPICTS THE TOPOGRAPHIC PLAN, 2) DEPICTS THE TOPOGRAPHIC PLAN OVERLAID OVER THE 2008 MASSGIS DIGITAL ORTHO AERIAL IMAGERY, 3) DEPICTS THE TOPOGRAPHIC PLAN OVERLAID OVER THE 2023 MASSGIS DIGITAL ORTHO AERIAL IMAGERY, AND 4) TOPOGRAPHIC PLAN WITH PROPOSED STRUCTURES.
- SUBJECT PROPERTY IS LOCATED IN ZONE, AGRICULTURAL RESIDENCE. (AR-1)



TOPOGRAPHIC PLAN
MEDWAY COMMUNITY FARM

50 WINTHROP STREET
MEDWAY, MA

JANUARY 8, 2025

PREPARED FOR:
TOWN OF MEDWAY

PREPARED BY:
NORFOLK COUNTY ENGINEERING DEPARTMENT
649 HIGH STREET, DEDHAM, MA 02026
(781)461-6128

Patricia J. Giam 1/8/2025
MEDWAY COMMUNITY FARM
PROFESSIONAL LAND SURVEYOR DATE: