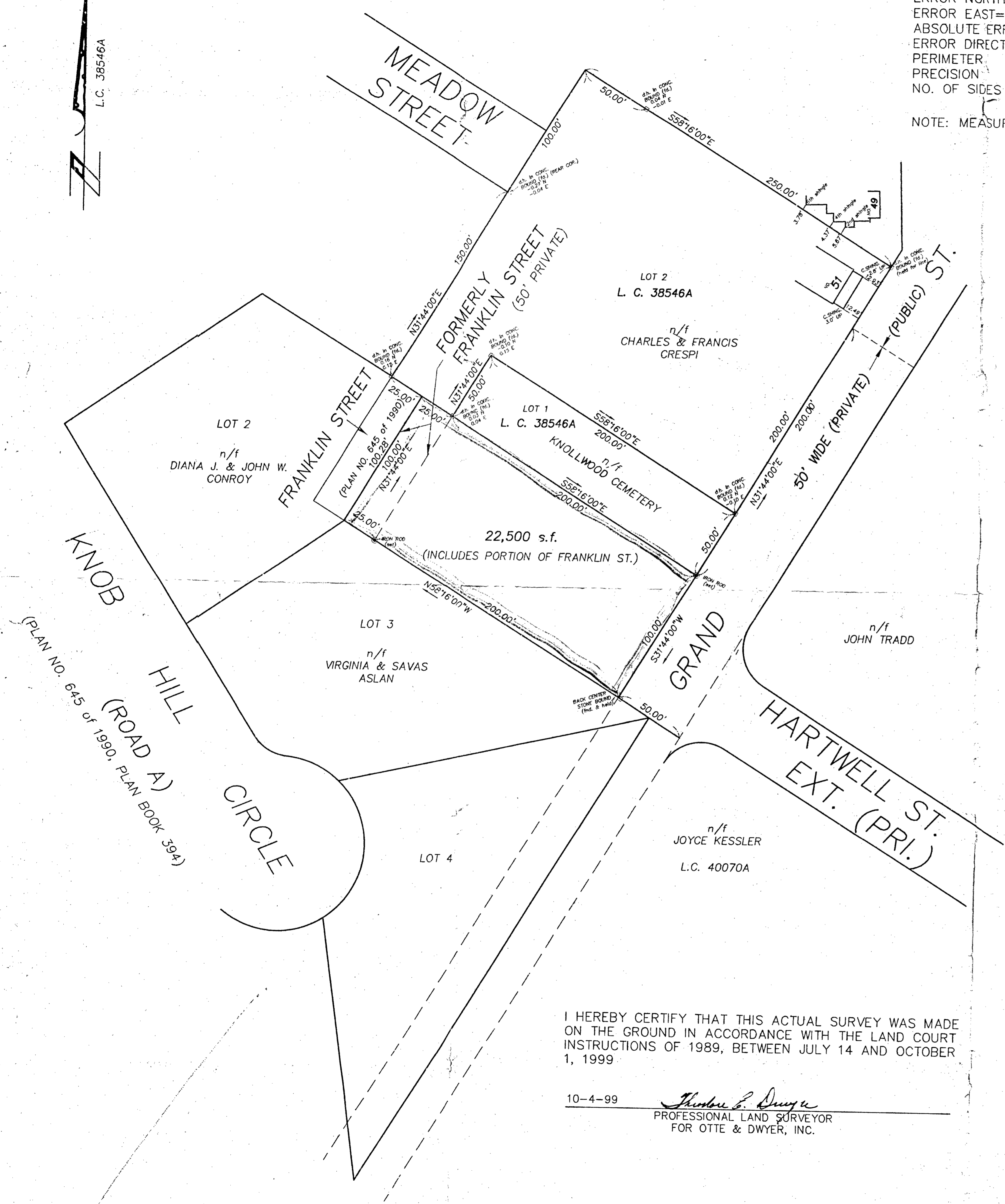
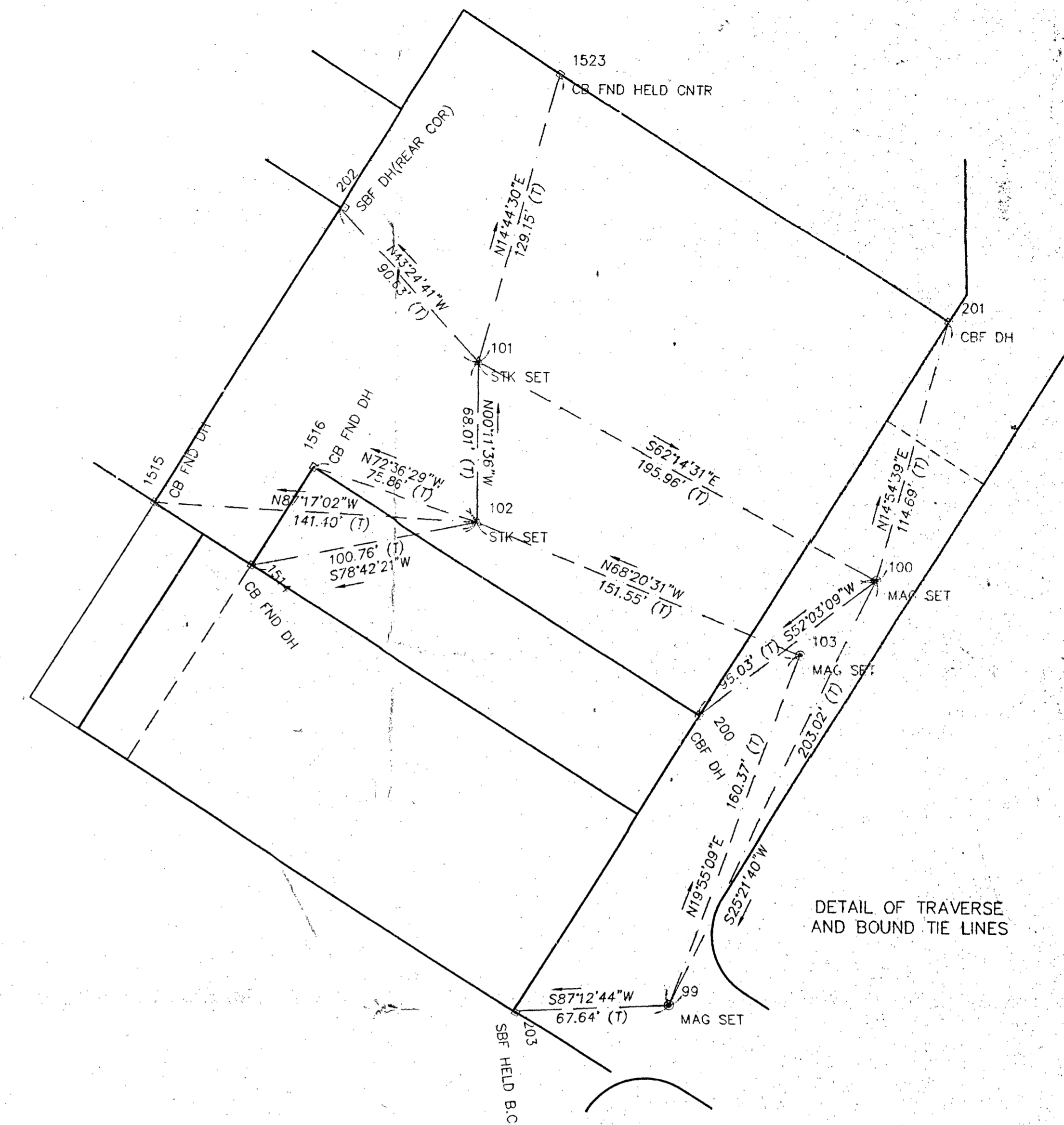


CLOSURE DATA:

ANGULAR ERROR= 00-00-30  
 ERROR NORTH= 0.0058  
 ERROR EAST= 0.0111  
 ABSOLUTE ERROR 0.0125  
 ERROR DIRECTION N 62°-33'-53" E  
 PERIMETER 778.93'  
 PRECISION 1 in 62382  
 NO. OF SIDES 5

NOTE: MEASUREMENTS BY STEEL TAPE



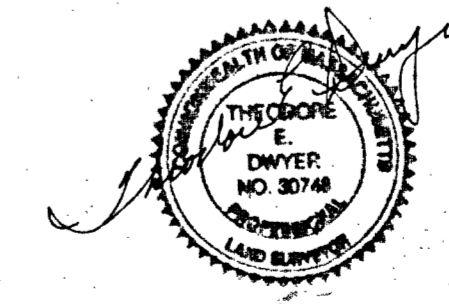
PLAN OF LAND  
 GRAND STREET  
 CANTON, MASS.

PREPARED FOR  
 LAURA M. KESSLER

BY  
 Otte & Dwyer, Inc.

LAND SURVEYORS

196 CENTRAL STREET SAUGUS, MASS.  
 P.O. BOX 982 (781) 233-8155  
 SCALE: 1" = 40' OCTOBER 4, 1999



CANTON PLANNING BOARD:  
 APPROVAL NOT REQUIRED UNDER  
 THE SUBDIVISION CONTROL LAW.

*Robert M. Donald*

*W. J. Dwyer*

JAN 4, 2000  
 DATE

NO DETERMINATION AS TO COMPLIANCE WITH ZONING IS MADE OR INTENDED.  
 THE ABOVE ENDORSEMENT IS NOT A DETERMINATION AS TO CONFORMANCE WITH ZONING REGULATIONS

I HEREBY CERTIFY THAT THIS ACTUAL SURVEY WAS MADE ON THE GROUND IN ACCORDANCE WITH THE LAND COURT INSTRUCTIONS OF 1989, BETWEEN JULY 14 AND OCTOBER 1, 1999

10-4-99  
*Theodore E. Dwyer*  
 PROFESSIONAL LAND SURVEYOR  
 FOR OTTE & DWYER, INC.