

PLAN 782 OF 1982 IN PLAN BOOK 233

- NOTES**
- ASSESSORS REF. MAP 71, LOT 71
 - ZONING DISTRICT: SUBURBAN
SETBACK REQUIREMENTS:
FRONT = 30'
SIDE = 15'
REAR = 20'

- REFERENCES**
- NORFOLK COUNTY REGISTRY OF DEEDS
 - DEED BOOK 10861 PAGE 660 (LOCUS DEED)
 - PLAN 782 OF 1972 IN PLAN BOOK 233
 - PLAN 662 OF 1965 IN PLAN BOOK 218

- LEGEND**
- BIT CONC BITUMINOUS CONCRETE
 - TB TELEPHONE BOX
 - UP UTILITY POLE
 - OVERHEAD WIRE

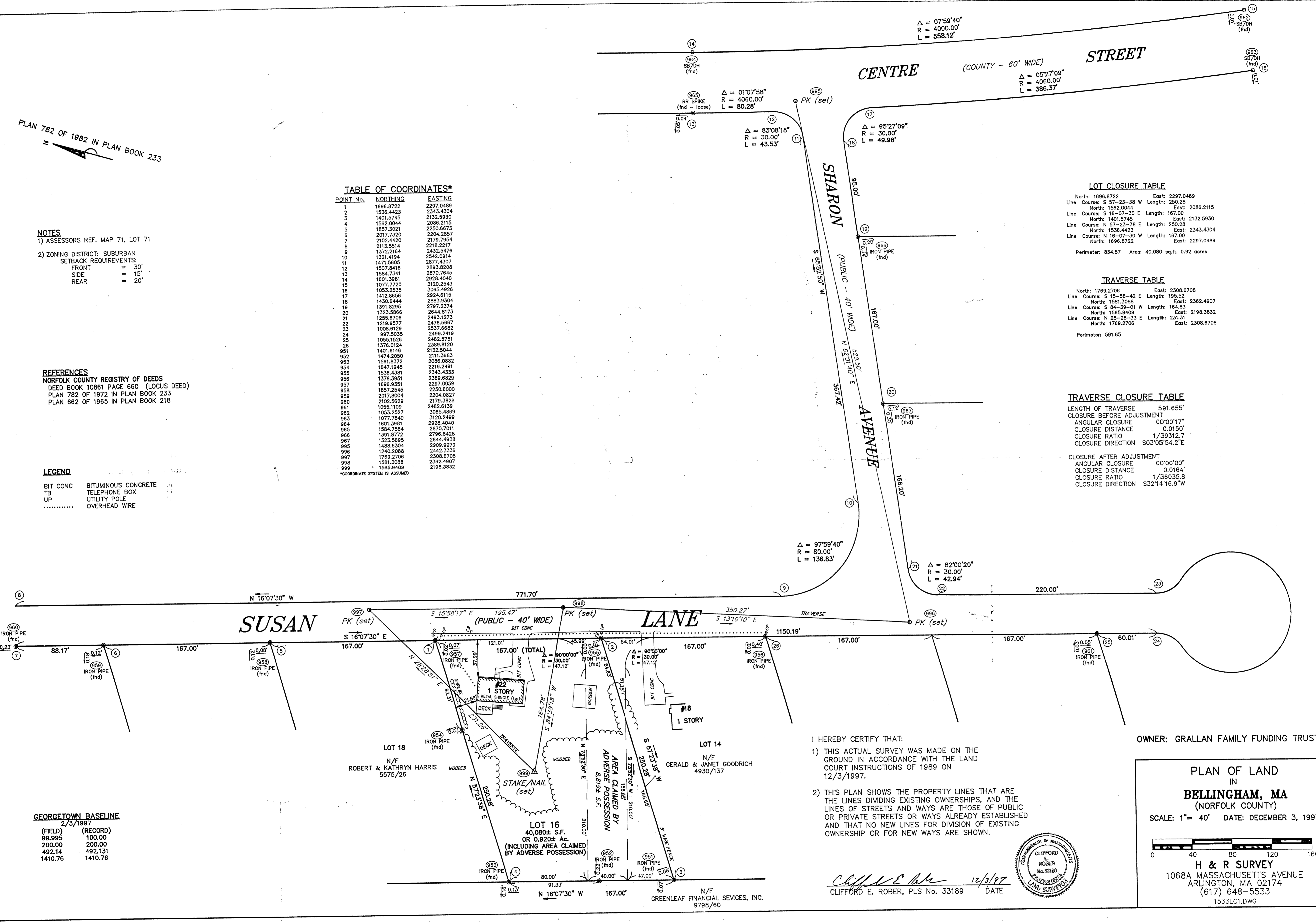
TABLE OF COORDINATES*

POINT No.	NORTHING	EASTING
1	1696.8722	2297.0489
2	1536.4423	2343.4304
3	1401.5745	2132.5930
4	1562.0044	2086.2115
5	1657.3021	2250.6673
6	2017.7320	2204.2857
7	2102.4420	2179.7954
8	2113.5514	2218.2217
9	1372.2164	2432.5476
10	1321.4194	2542.0914
11	1471.5605	2877.4307
12	1507.8416	2893.8208
13	1584.7341	2870.7645
14	1601.3981	2928.4040
15	1077.7720	3120.2543
16	1053.2535	3065.4926
17	1412.8656	2924.6115
18	1430.6444	2883.9304
19	1391.8295	2797.2374
20	1323.5866	2844.8173
21	1265.6706	2493.1273
22	1218.9577	2476.5667
23	1008.6129	2537.6662
24	997.5035	2489.2419
25	1055.1526	2482.5751
26	1376.0124	2389.8120
951	1401.6146	2132.5044
952	1474.2050	2111.3683
953	1561.8372	2086.0882
954	1647.1945	2219.2491
955	1536.4381	2343.4333
956	1376.3951	2389.6829
957	1696.9351	2297.0059
958	1857.2545	2250.6000
959	2017.8004	2204.0927
960	2102.5629	2179.3828
961	1055.1109	2482.6139
962	1053.2527	3065.4969
963	1077.7840	3120.2499
964	1601.3981	2928.4040
965	1584.7584	2870.7011
966	1391.8772	2796.8428
967	1323.5895	2844.4938
968	1488.6304	2909.9979
969	1240.2088	2442.3336
997	1769.2706	2308.6708
998	1581.3088	2362.4907
999	1565.9409	2198.3832

*COORDINATE SYSTEM IS ASSUMED

GEORGETOWN BASELINE
2/3/1997

(FIELD)	(RECORD)
99.995	100.00
200.00	200.00
492.14	492.131
1410.76	1410.76



LOT CLOSURE TABLE

Line Course	Length	East	North
S 57-23-38 W	250.28	2297.0489	1696.8722
S 16-07-30 E	167.00	2086.2115	1562.0044
S 16-07-30 E	167.00	2132.5930	1401.5745
N 57-23-38 E	250.28	2343.4304	1536.4423
N 16-07-30 W	167.00	2297.0489	1696.8722

Perimeter: 834.57 Area: 40,080 sq.ft. 0.92 acres

TRAVERSE TABLE

Line Course	Length	East	North
S 15-58-17 E	195.52	2362.4907	1581.3088
S 84-39-01 W	164.83	2198.3832	1555.9409
N 28-28-33 E	231.31	2308.6708	1769.2706

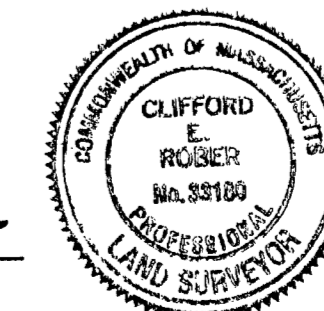
Perimeter: 591.65

TRAVERSE CLOSURE TABLE

LENGTH OF TRAVERSE	591.655'
CLOSURE BEFORE ADJUSTMENT	
ANGULAR CLOSURE	00°00'17"
CLOSURE DISTANCE	0.0150'
CLOSURE RATIO	1/39312.7
CLOSURE DIRECTION	S03°05'54.2"E
CLOSURE AFTER ADJUSTMENT	
ANGULAR CLOSURE	00°00'00"
CLOSURE DISTANCE	0.0164'
CLOSURE RATIO	1/36035.8
CLOSURE DIRECTION	S32°14'16.9"W

- I HEREBY CERTIFY THAT:
- THIS ACTUAL SURVEY WAS MADE ON THE GROUND IN ACCORDANCE WITH THE LAND COURT INSTRUCTIONS OF 1989 ON 12/3/1997.
 - THIS PLAN SHOWS THE PROPERTY LINES THAT ARE THE LINES DIVIDING EXISTING OWNERSHIPS, AND THE LINES OF STREETS AND WAYS ARE THOSE OF PUBLIC OR PRIVATE STREETS OR WAYS ALREADY ESTABLISHED AND THAT NO NEW LINES FOR DIVISION OF EXISTING OWNERSHIP OR FOR NEW WAYS ARE SHOWN.

Clifford E. Rober 12/3/97
CLIFFORD E. ROBER, PLS No. 33189 DATE



OWNER: GRALLAN FAMILY FUNDING TRUST

PLAN OF LAND
IN
BELLINGHAM, MA
(NORFOLK COUNTY)
SCALE: 1" = 40' DATE: DECEMBER 3, 1997

H & R SURVEY
1068A MASSACHUSETTS AVENUE
ARLINGTON, MA 02174
(617) 648-5533
1533LC1.DWG