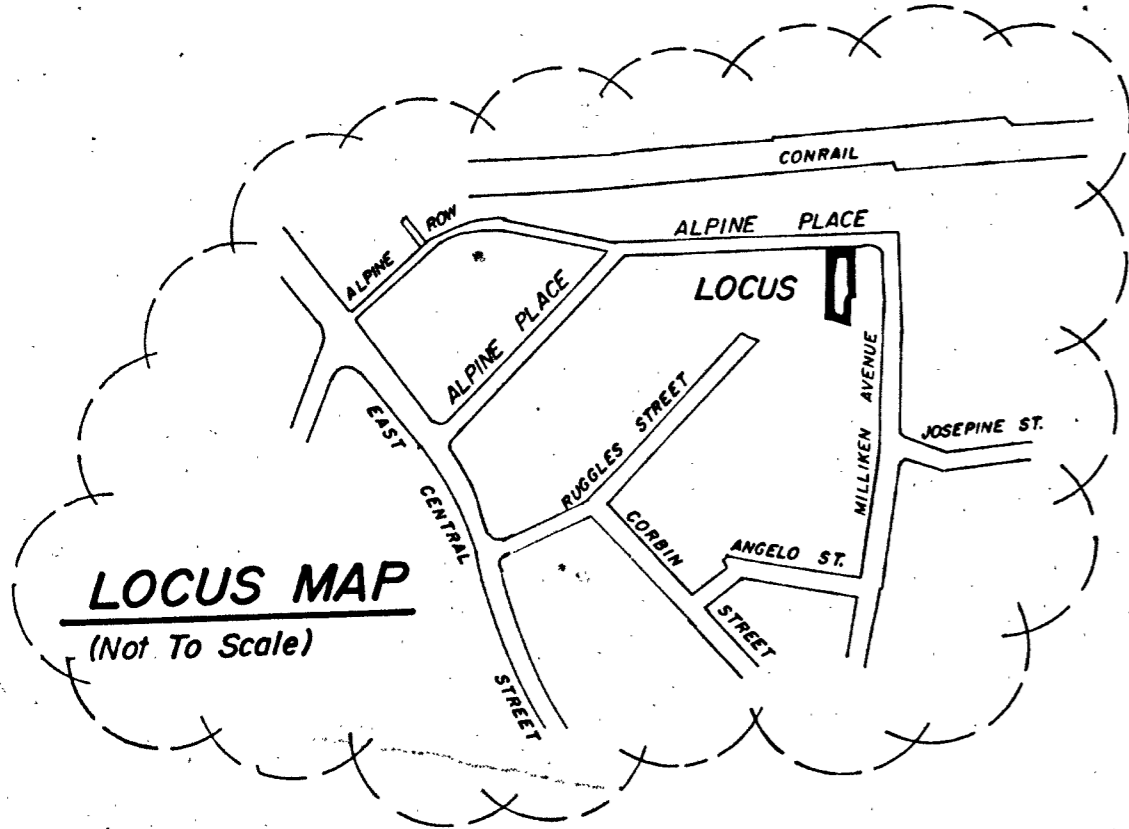


**UNADJUSTED CLOSURE DATA**

- Number of Sides = 5
- Angular Error = 1 Second
- Northing Error = 0.0124
- Easting Error = -0.0123
- Absolute Error = 0.0175
- Direction of Error = N 44°-47'-12" W
- Perimeter = 1095.8604
- Precision = 1 Foot in 62,651



**REFERENCES:**

- See Plan Titled "Land of Enoch E. Waite Franklin, Mass." Dated November 1922 Prepared By A. Schuyler Clapp. (Plan Bk. 443 - Pg. 1720 - Pl. No. 1014 of 1926).
- See Deed of John P. Bassignani (Bk. 6007 - Pg. 271).
- See Deed of Edmund O. & Gemma Smith (Bk. 4602 - Pg. 535).
- See Deed of Mary C. Dorazio Bk. 1530 - Pg. 402 for Common Drive.

**REGISTERED LAND SURVEYORS CERTIFICATION**

I hereby certify that the property lines shown on this plan are the lines dividing existing ownership, and the lines of the streets and ways shown are those of public or private streets or ways already established and that no new lines for division of existing ownership or for new ways, are shown.

Dated: February 6, 1995

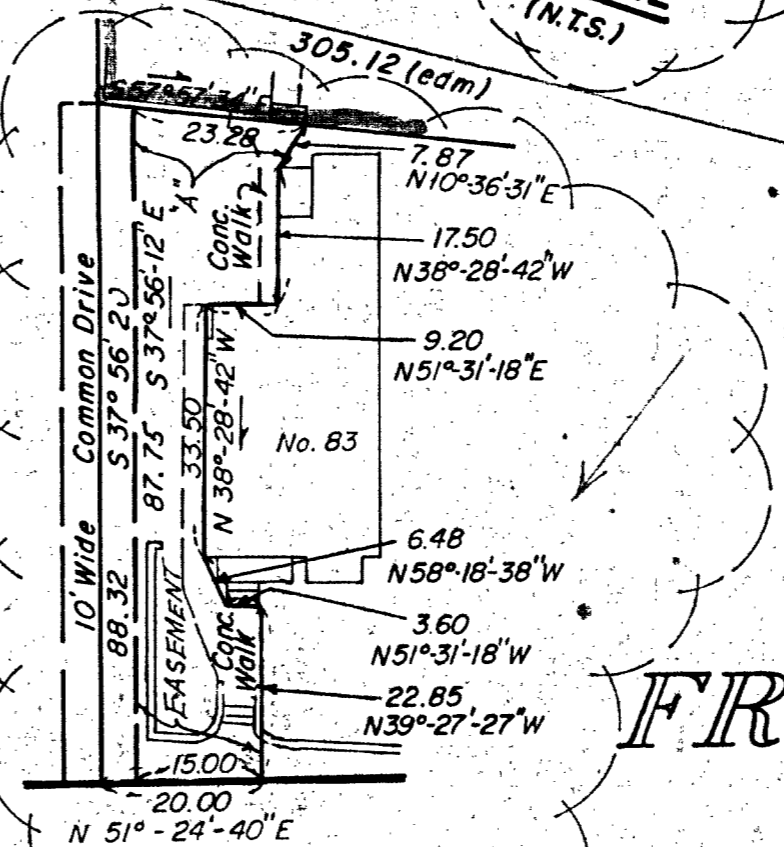
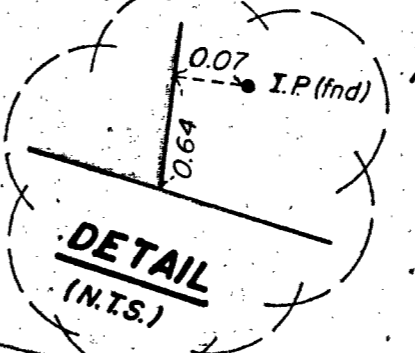
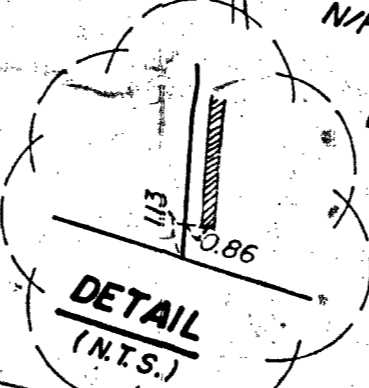
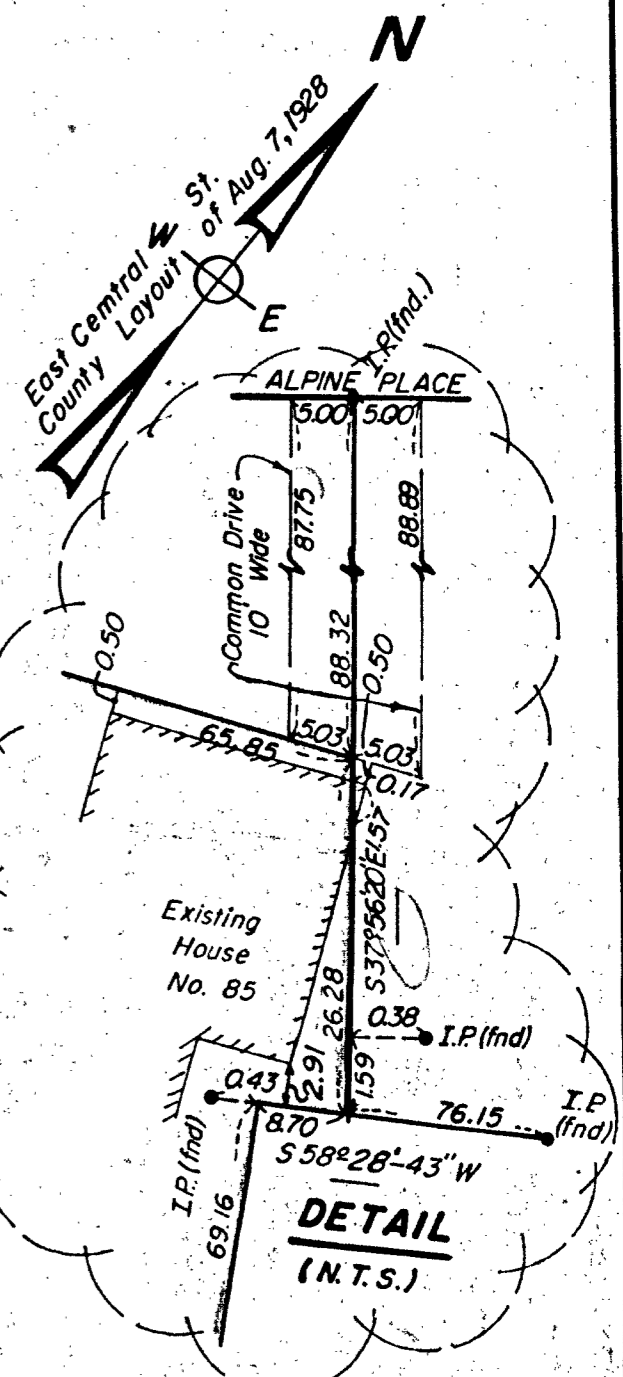
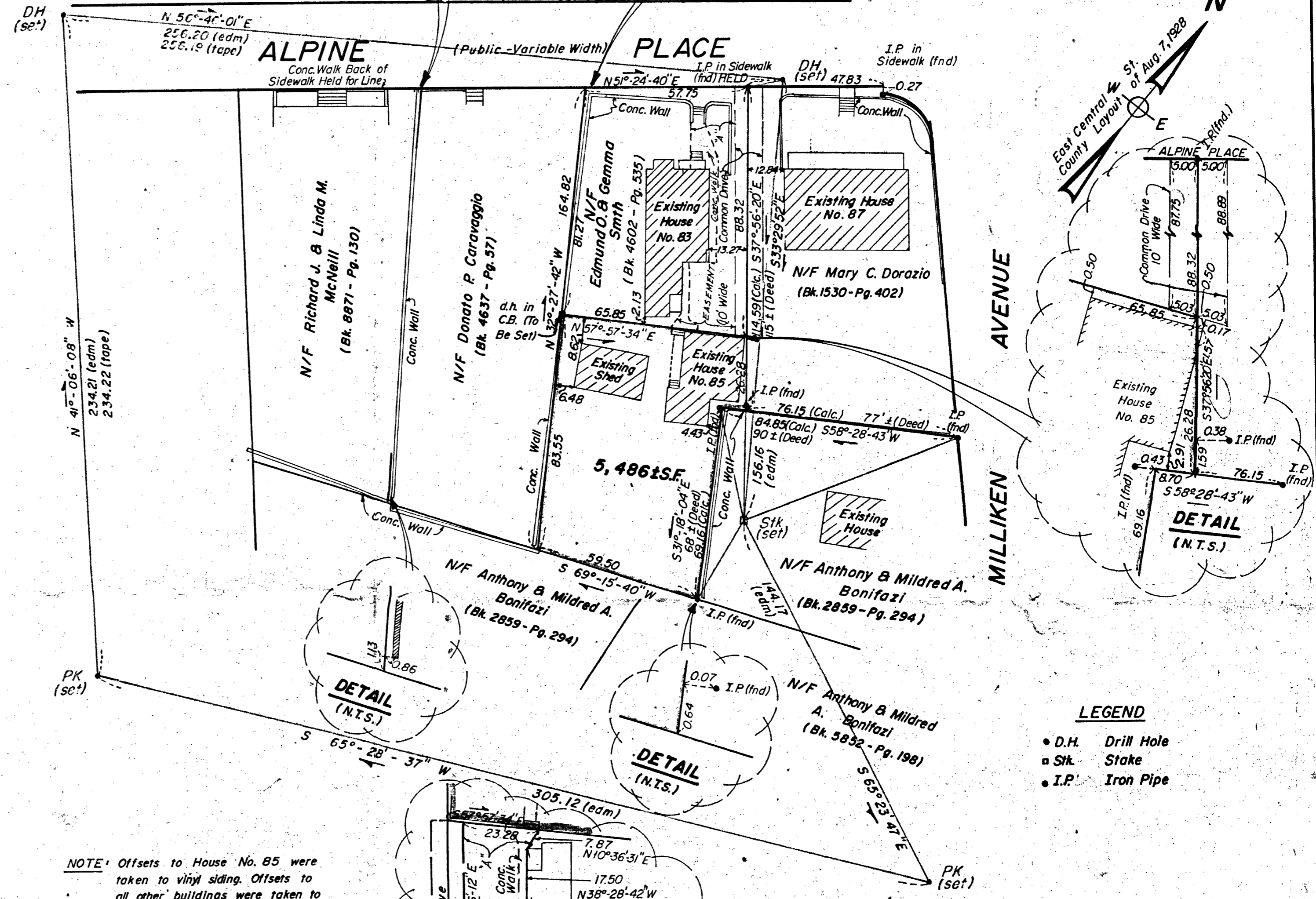
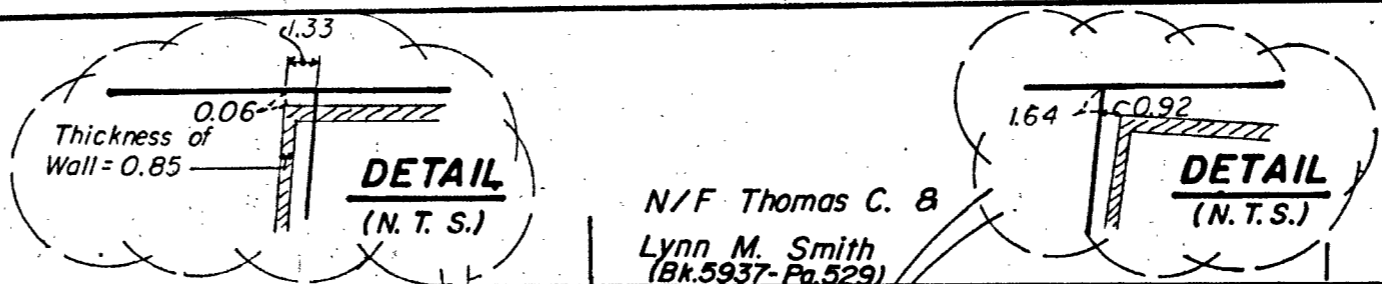


Robert C. Salvetti  
Robert C. Salvetti, P.L.S.

NOTE: Offsets to House No. 85 were taken to vinyl siding. Offsets to all other buildings were taken to corner boards.

I certify that this actual survey was made on the ground in accordance with the Land Court Instructions of 1989 on or between December 20, 1994 and January 12, 1995.

Robert C. Salvetti 2-6-95  
Robert C. Salvetti, P.L.S. Date



**LEGEND**

- D.H. Drill Hole
- Stk. Stake
- I.P. Iron Pipe

**PLAN OF LAND IN FRANKLIN MASS.**

Norfolk County  
Scale: 1" = 30'  
February 6, 1995  
SALVETTI, Surveying & Engineering Assoc.  
10 Emmons St. Franklin, Mass. 02038  
(508) 528-9393

RECORD OWNER  
John P. Bassignani  
85 Alpine Place  
Franklin, Mass. 02038

