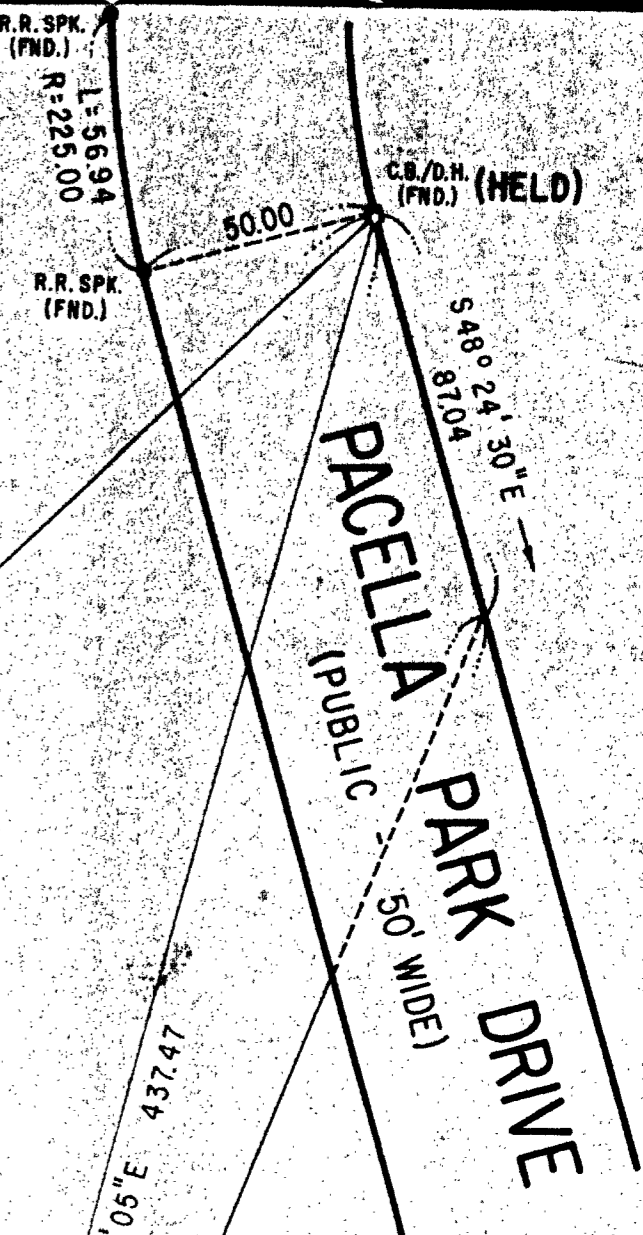


I HEREBY CERTIFY THAT THE PROPERTY LINES SHOWN ON THIS PLAN ARE THE LINES DIVIDING EXISTING OWNERSHIPS, AND THE LINES OF THE STREETS AND WAYS SHOWN ARE THOSE OF PUBLIC OR PRIVATE STREETS OR WAYS ALREADY ESTABLISHED, AND THAT NO NEW LINES FOR DIVISION OF EXISTING OWNERSHIP OR FOR NEW WAYS ARE SHOWN.

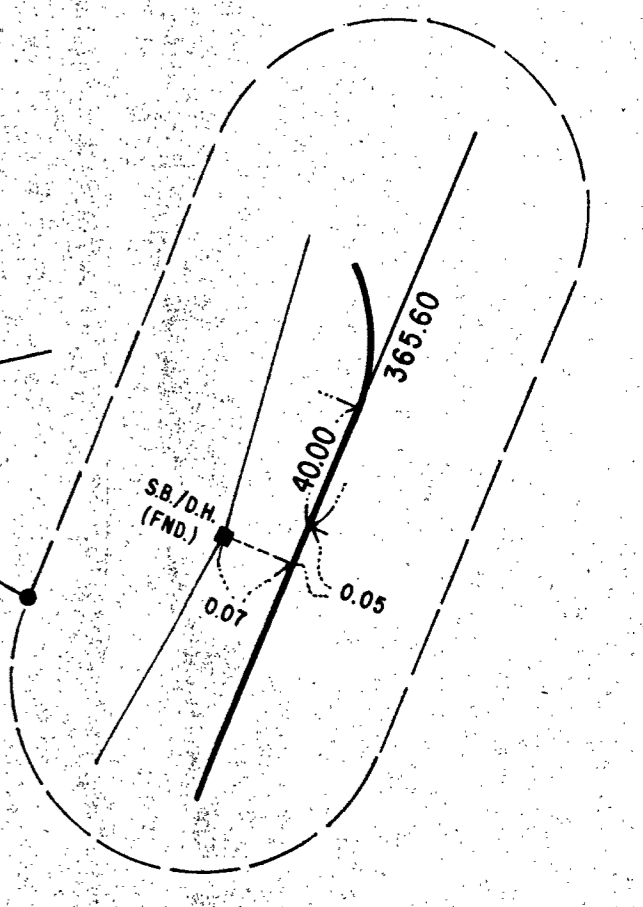
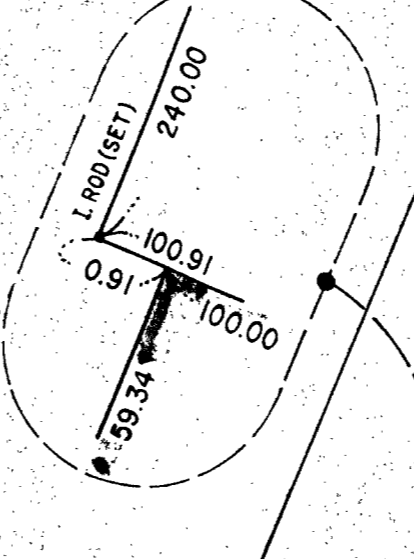
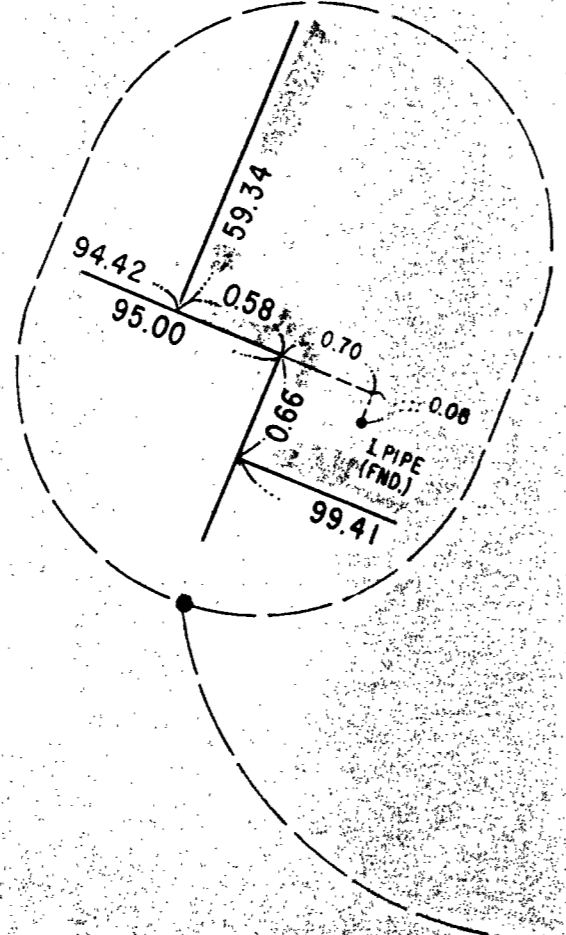
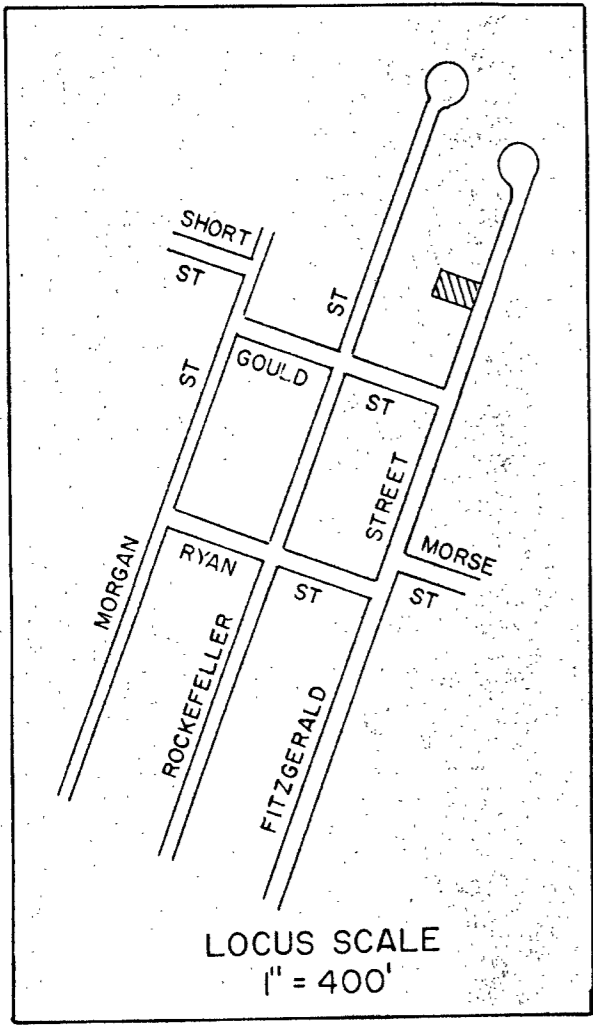
DATE: Nov. 1, 1993 William R. Buckley
PROFESSIONAL LAND SURVEYOR

LAND COURT PLAN NO. 32524



(HELD)
C.B./D.H.
(FND.)

L.C.P. 32524



I CERTIFY THAT THIS ACTUAL SURVEY WAS MADE ON THE GROUND IN ACCORDANCE WITH THE LAND COURT INSTRUCTIONS OF 1989 BETWEEN SEPT. 1, 1987 AND OCT. 17, 1987 AND ON OCT. 14, 1993, AND ON APRIL 11, 1994
DATE: APR. 11, 1994
William R. Buckley
PROFESSIONAL LAND SURVEYOR

RECORD OWNER:-

PACELLA BROS., INC.
3 MADISON STREET
PLAINVILLE, MA

NO. OF TRAVERSE SIDES	6
ANGULAR ERROR	23 SECONDS
ERROR NORTH	-0.0118
ERROR EAST	-0.0703
ABSOLUTE ERROR	0.0713
DIRECTION OF ERROR	S 80° 30' 21" W
PERIMETER	1999.38
PRECISION	1/26,651

APPROVAL NOT REQUIRED UNDER THE SUBDIVISION CONTROL LAW RANDOLPH PLANNING BOARD
DATE: _____

PLAN OF LAND IN
RANDOLPH, MASS.

Scale: 1" = 40' Oct. 29, 1993

BAY COLONY GROUP, INC. Rev. APRIL 11, 1994 AUGUST 5, 1994

4 SCHOOL STREET
FOXBOROUGH, MA 02035
(508) 543-3939

