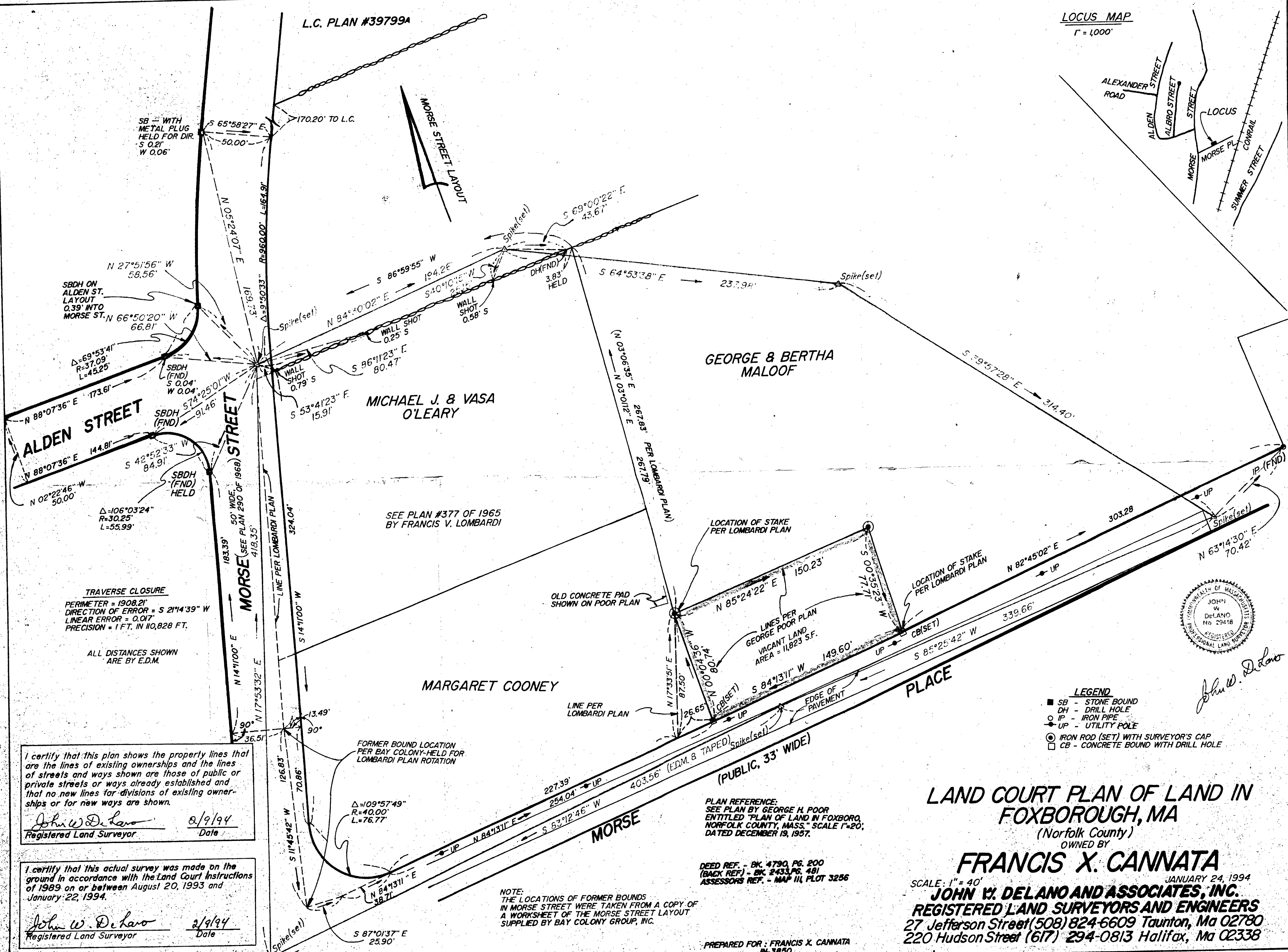
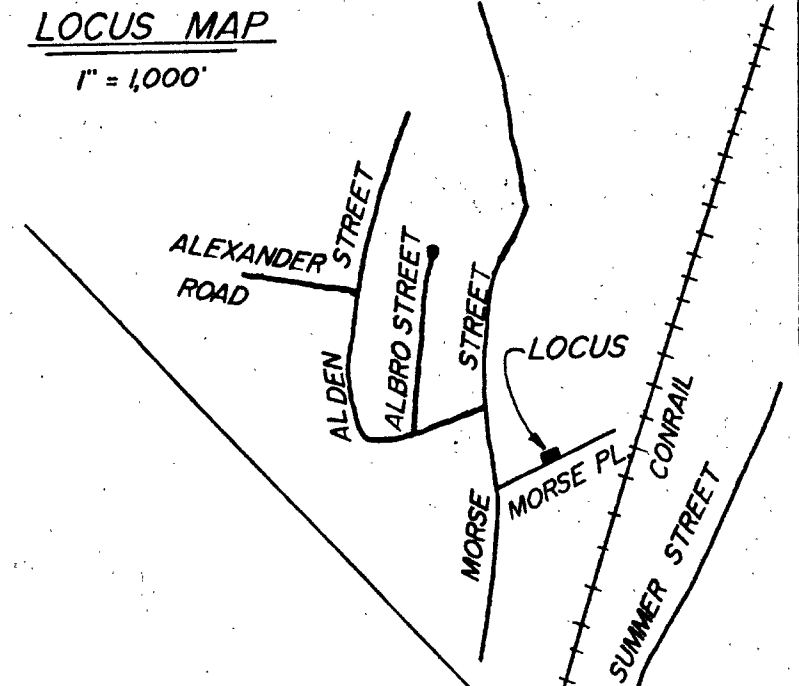


L.C. PLAN #39799A

LOCUS MAP

1" = 1,000'



SB WITH METAL PLUG HELD FOR DIR. S 0.21' W 0.06'

SBDH ON ALDEN ST. LAYOUT 0.39' INTO MORSE ST. N 66°50'20" W 66.81'

SBDH (FND) S 0.04' W 0.04' 91.46'

SBDH (FND) HELD

TRAVERSE CLOSURE PERIMETER = 1908.21' DIRECTION OF ERROR = S 21°14'39" W LINEAR ERROR = 0.017' PRECISION = 1 FT. IN 110,828 FT.

ALL DISTANCES SHOWN ARE BY E.D.M.

MICHAEL J. & VASA O'LEARY

GEORGE & BERTHA MALOOF

SEE PLAN #377 OF 1965 BY FRANCIS V. LOMBARDI

MARGARET COONEY

LOCATION OF STAKE PER LOMBARDI PLAN

OLD CONCRETE PAD SHOWN ON POOR PLAN

LINE PER GEORGE POOR PLAN VACANT LAND AREA = 11,823 S.F.

PLACE

I certify that this plan shows the property lines that are the lines of existing ownerships and the lines of streets and ways shown are those of public or private streets or ways already established and that no new lines for divisions of existing ownerships or for new ways are shown. John W. DeLano 2/9/94 Registered Land Surveyor Date

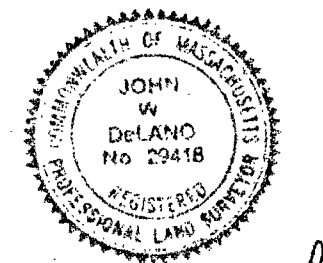
I certify that this actual survey was made on the ground in accordance with the Land Court Instructions of 1989 on or between August 20, 1993 and January 22, 1994. John W. DeLano 2/9/94 Registered Land Surveyor Date

NOTE: THE LOCATIONS OF FORMER BOUNDS IN MORSE STREET WERE TAKEN FROM A COPY OF A WORKSHEET OF THE MORSE STREET LAYOUT SUPPLIED BY BAY COLONY GROUP, INC.

PLAN REFERENCE: SEE PLAN BY GEORGE H. POOR ENTITLED "PLAN OF LAND IN FOXBORO, NORFOLK COUNTY, MASS." SCALE 1"=20', DATED DECEMBER 19, 1957.

DEED REF. - BK. 4790, PG. 200 (BACK REF.) - BK. 2433, PG. 491 ASSESSORS REF. - MAP III, PLOT 3256

PREPARED FOR: FRANCIS X. CANNATA JUN-3850



John W. DeLano

LAND COURT PLAN OF LAND IN FOXBOROUGH, MA (Norfolk County)

OWNED BY FRANCIS X. CANNATA

SCALE: 1" = 40' JANUARY 24, 1994 JOHN W. DELANO AND ASSOCIATES, INC. REGISTERED LAND SURVEYORS AND ENGINEERS 27 Jefferson Street (508) 824-6609 Taunton, Ma 02780 220 Hudson Street (617) 294-0813 Halifax, Ma 02338