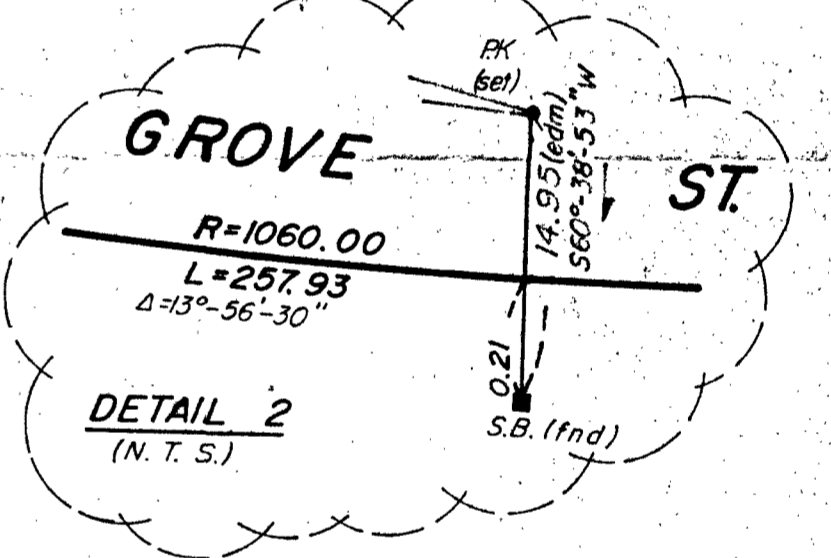
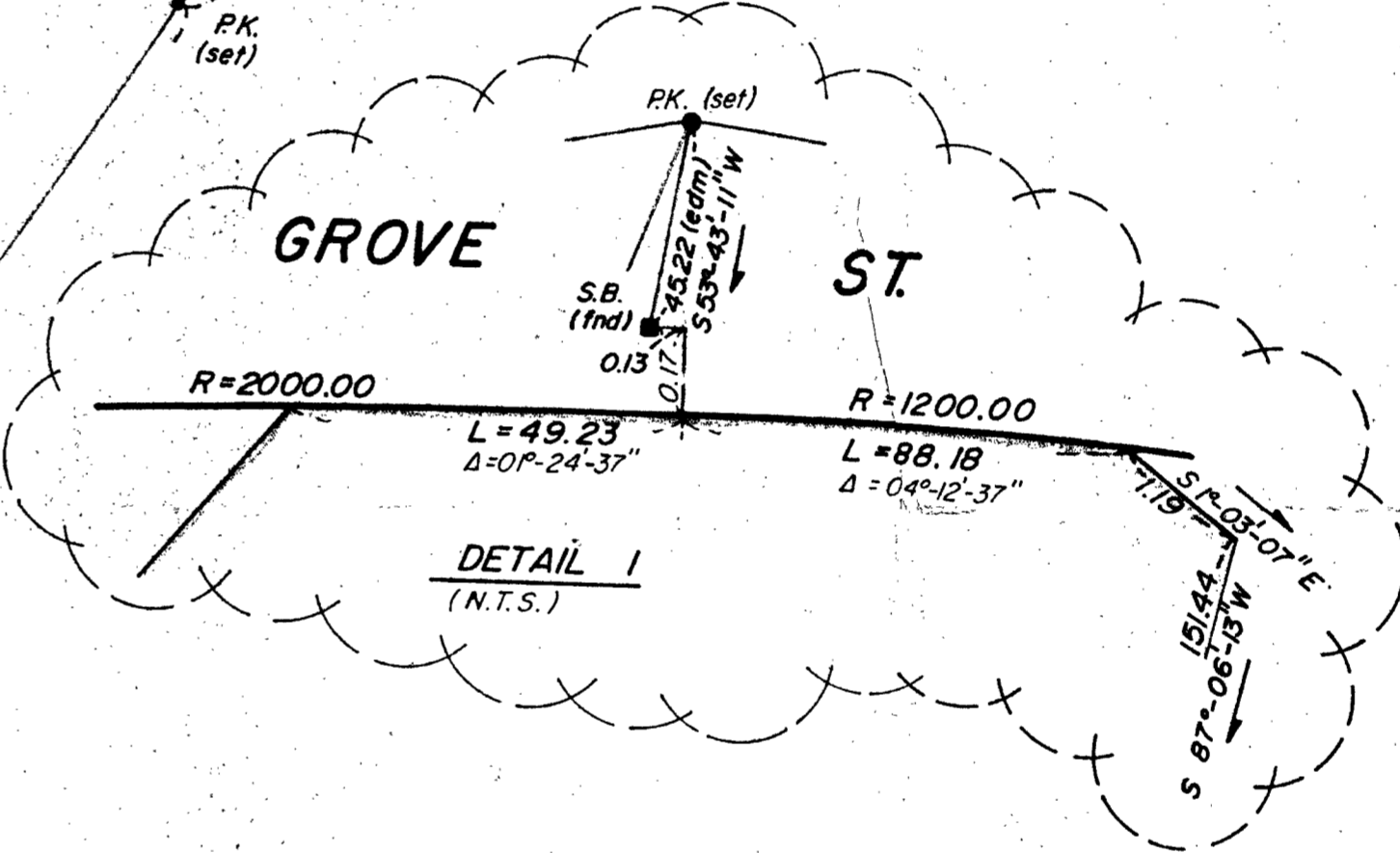
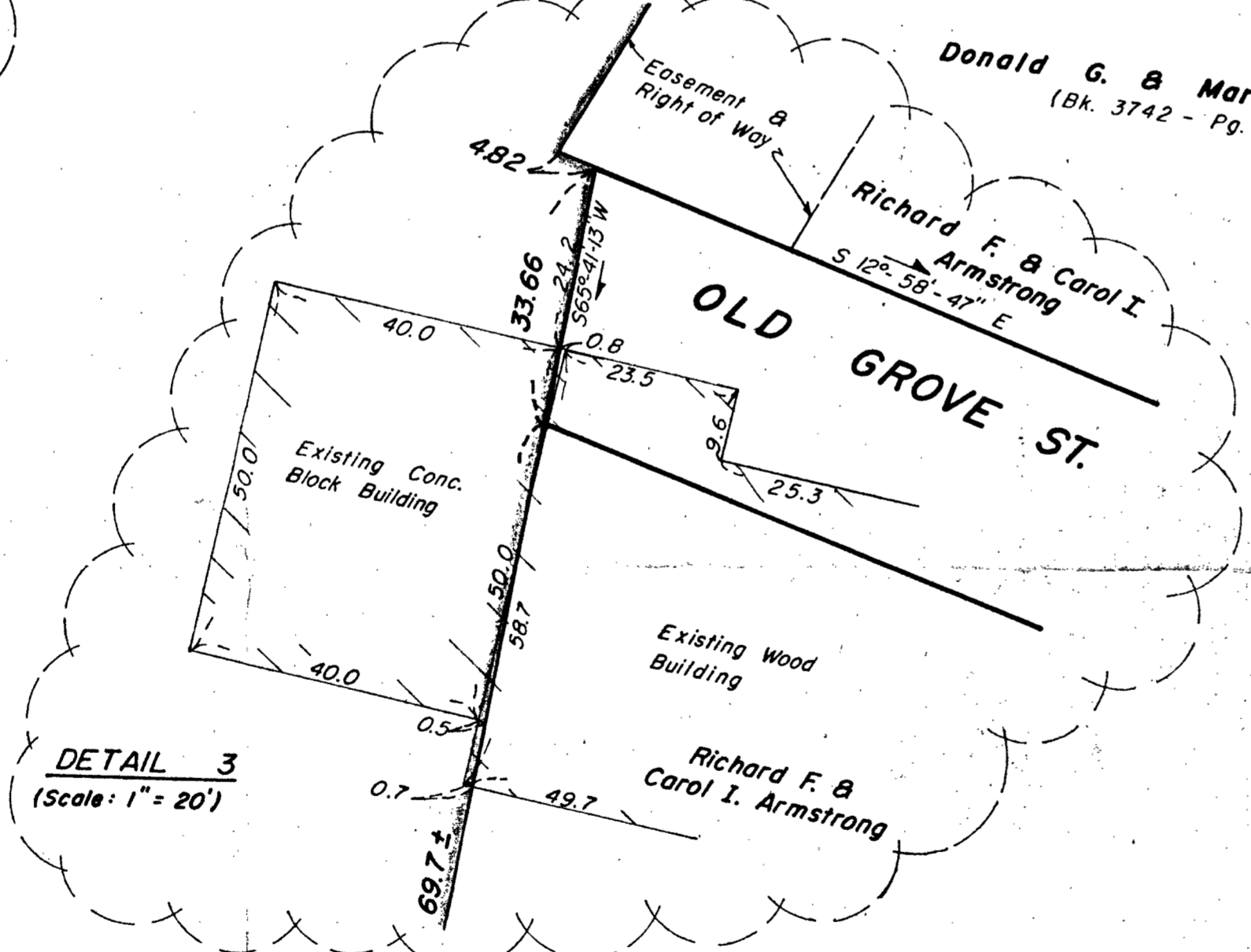
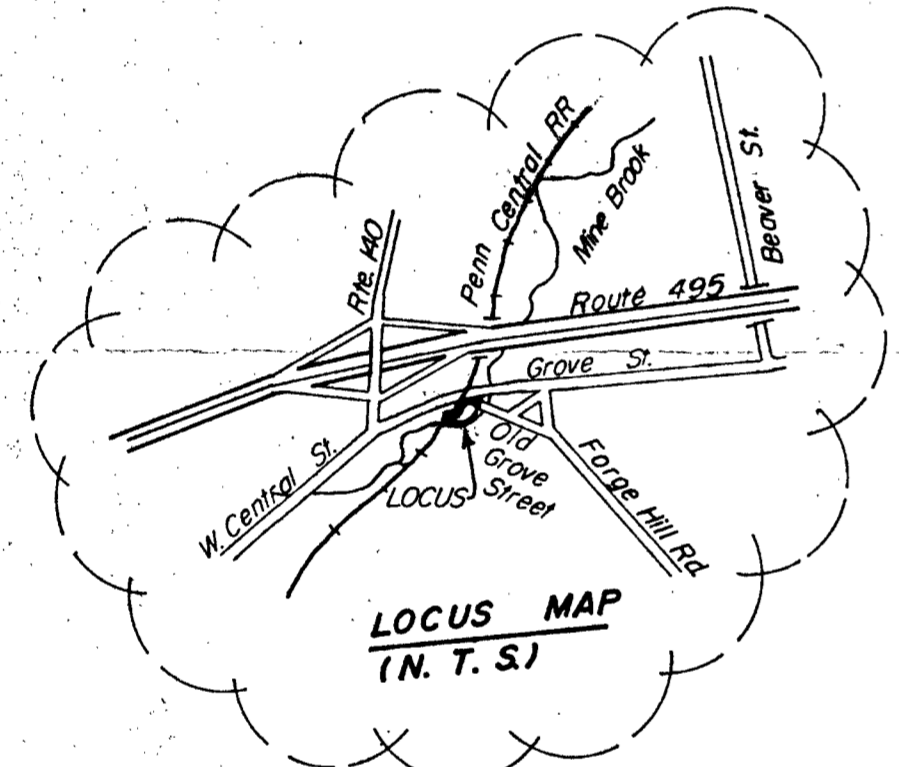
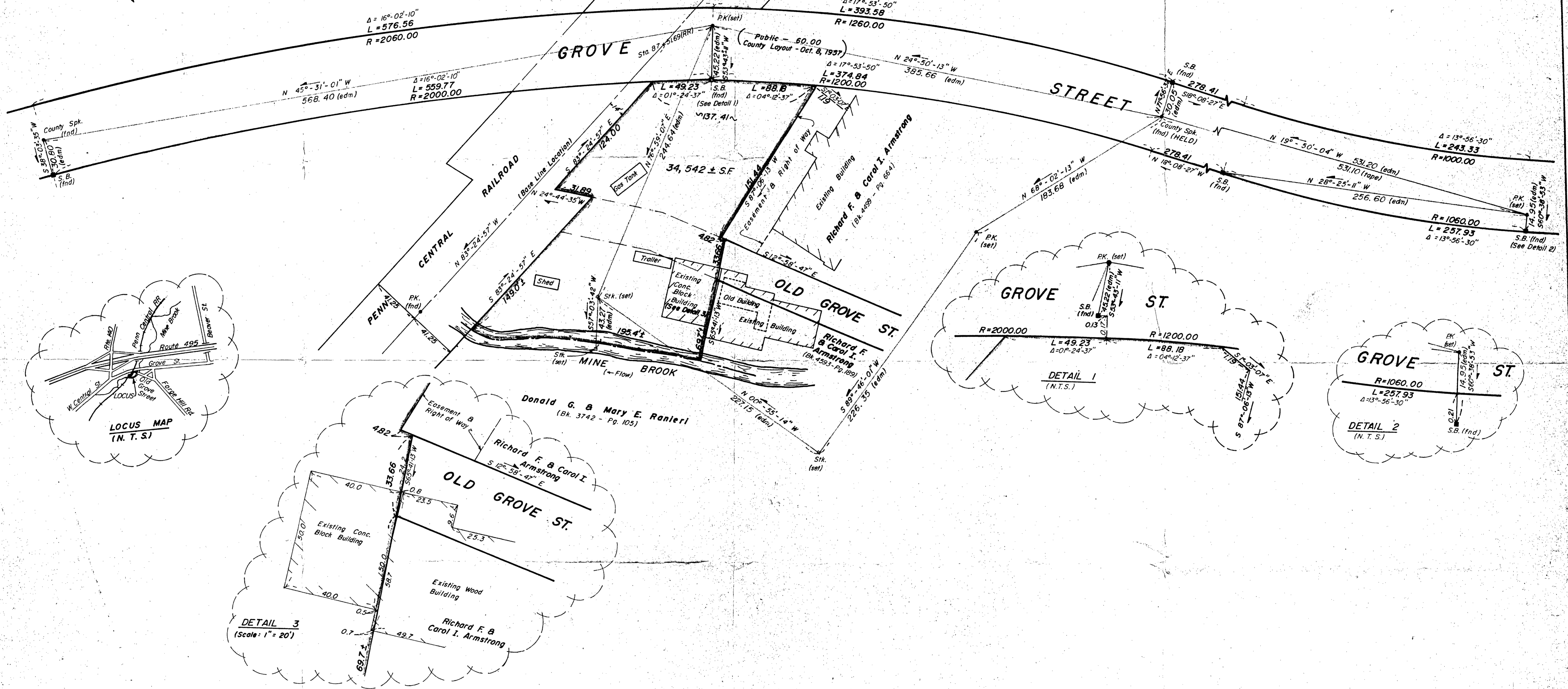
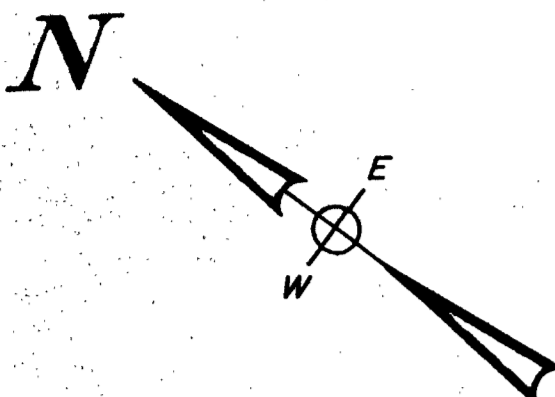


Assessors Map 72 - Parcel 6A
 ZONING : BUSINESS
 Area = 20,000 S.F.
 Frontage = 125.00 Ft.
 Depth = 160.00 Ft.

ROUGH CLOSURE DATA
 Angular Error = 2 Seconds
 Northing Error = 0.0100
 Easting Error = -0.0048
 Absolute Error = 0.0111
 Direction of Error = N 25°-52'-16" W
 Perimeter = 1267.4741
 Precision = 1 Foot in 114297



FRANKLIN PLANNING BOARD
 Approval not required under
 the Subdivision Control Law.

James Mast

 Date: Aug 14 1992

I hereby certify that this actual survey
 was made on the ground in accordance with
 the Land Court Instructions of 1989 on or
 between August 5, 1992 and August 17, 1992.

Robert C. Salvetti

 Robert C. Salvetti, P.L.S.
 Date: Sept 9 1992

PLAN REFERENCES:
 - Plan by Schofield Brothers, Registered Civil Engineers
 Dated Nov. 8, 1956 (Pl. Bk. 221-No. 1173 of 1966)
 L.C. Registration Case No. 27131 - Dismissed
 - Plan by Schofield Brothers, Inc., Registered Land Surveyors
 Dated March 2, 1968 (Bk. 4499 - No. 158 of 1968).
 - Deed Bk. 8588 - Pg. 162.

PLAN OF LAND
 IN
FRANKLIN MASS.

Norfolk County
 Scale: 1" = 40' Sept. 8, 1992
 SALVETTI, Surveying & Engineering Assoc.
 10 Emmons St. Franklin, Mass.
 (508) 528-9393
 40 20 0 40 80