

APPROVAL NOT REQUIRED UNDER THE SUBDIVISION CONTROL LAW
 RANDOLPH PLANNING BOARD
 DATE 10/13/88
Michael P. Delaney, Chairman
Gail V. Kelly
James J. Kelly

I CERTIFY THAT THIS ACTUAL SURVEY WAS MADE ON THE GROUND IN ACCORDANCE WITH THE LAND COURT INSTRUCTIONS OF 1971, ON OR BETWEEN SEPT. 1, AND OCT. 17, 1987.
William F. Beville

I CERTIFY THAT THE CONDITIONS ON THE GROUND ARE THE SAME NOW AS AT THE TIME OF THE ORIGINAL SURVEY.
William F. Beville 9-7-88
 3-15-89

OWNER: PACELLA BROS., INC.
 3 MADISON ST.
 PLAINVILLE, MA
 ZONING: RESIDENTIAL

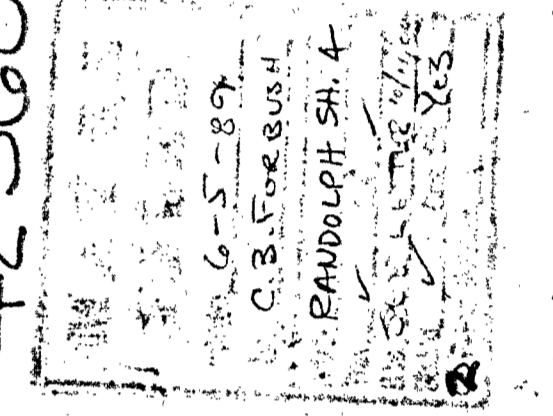
NOTE:
 1. LOT 4 IS A NON-BUILDABLE, NON-CONFORMING LOT.
 2. PRIVATE PORTIONS OF ROCKEFELLER ST. AND FITZGERALD ST. ARE NOT CONSTRUCTED.

PLAN OF LAND IN
RANDOLPH, MA
 SCALE 1" = 40'
 AUG. 9, 1988
 BAY COLONY SURVEYING INC.
 4 SCHOOL STREET FOXBOROUGH, MA

DEED PLAN	
Date	
Project	
Atties	
Drawn by	
Map by	
Inspected by	
Approved by	



42561 A
 42560 A



42560 A