

I HEREBY CERTIFY THAT THE PROPERTY LINES SHOWN ON THIS PLAN ARE THE LINES DIVIDING EXISTING OWNERSHIPS, AND THE LINES OF THE STREETS AND WAYS SHOWN ARE THOSE OF PUBLIC OR PRIVATE STREETS OR WAYS ALREADY ESTABLISHED, AND THAT NO NEW LINES FOR DIVISION OF EXISTING OWNERSHIP OR FOR NEW WAYS ARE SHOWN.

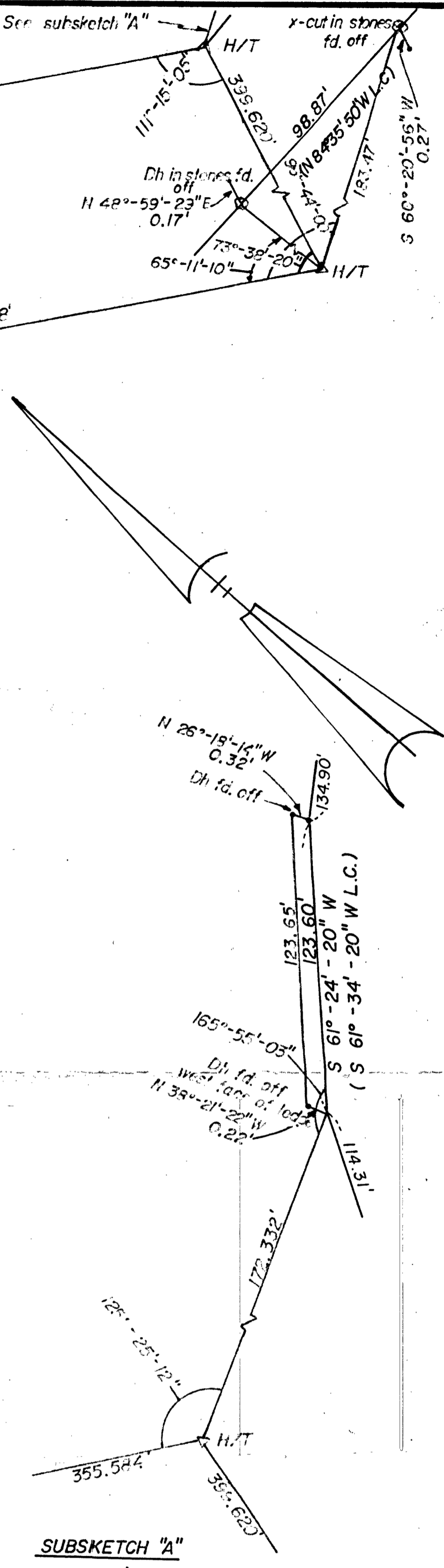
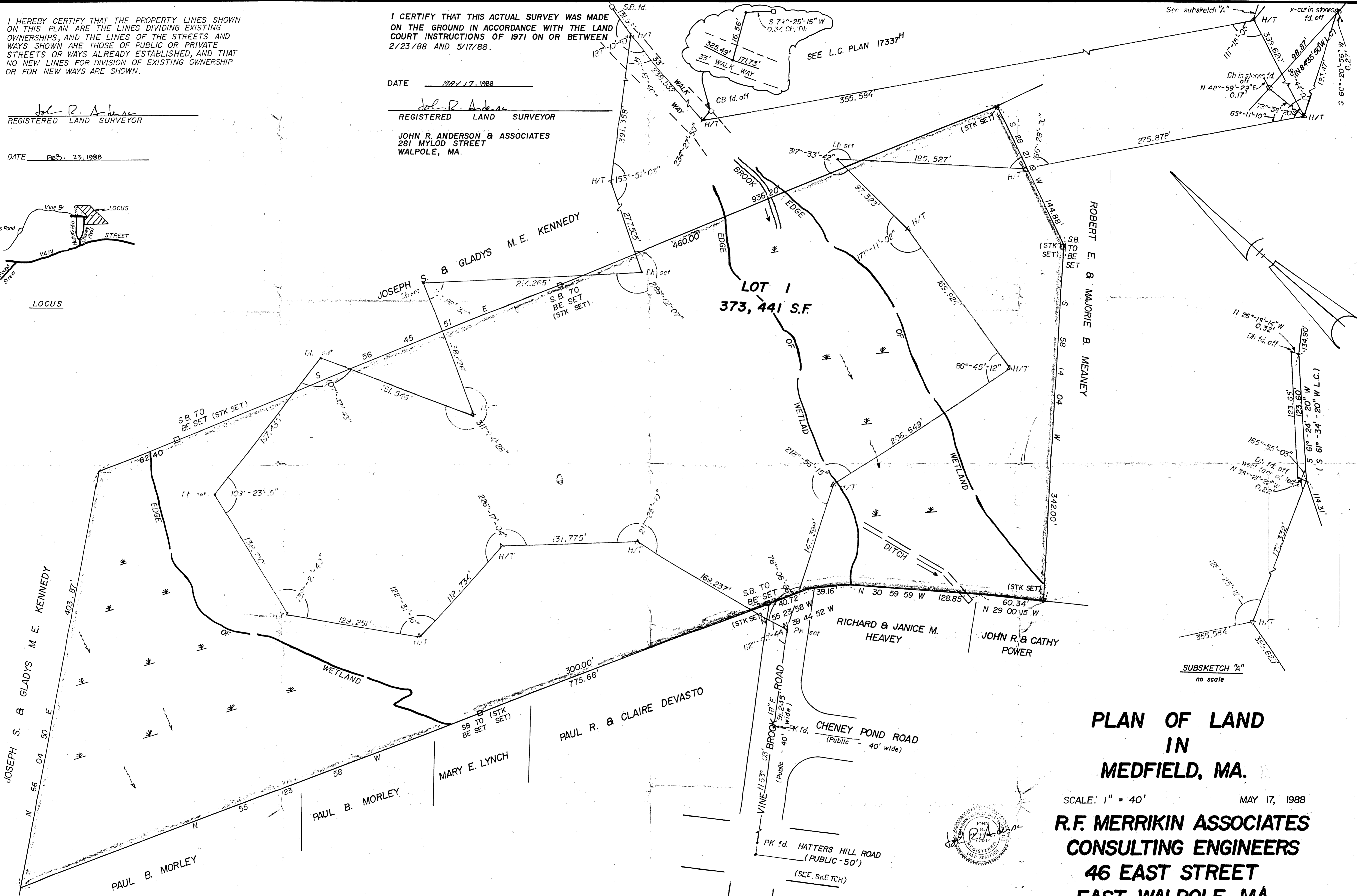
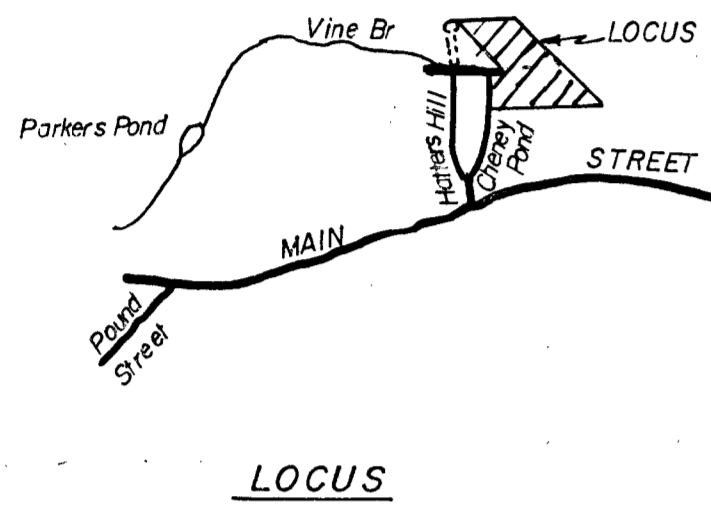
I CERTIFY THAT THIS ACTUAL SURVEY WAS MADE ON THE GROUND IN ACCORDANCE WITH THE LAND COURT INSTRUCTIONS OF 1971 ON OR BETWEEN 2/23/88 AND 5/17/88.

John R. Anderson
REGISTERED LAND SURVEYOR

DATE MAY 17, 1988
John R. Anderson
REGISTERED LAND SURVEYOR

DATE FEB. 23, 1988

JOHN R. ANDERSON & ASSOCIATES
281 MYLOD STREET
WALPOLE, MA.



**PLAN OF LAND
IN
MEDFIELD, MA.**

SCALE: 1" = 40' MAY 17, 1988
**R.F. MERRIKIN ASSOCIATES
CONSULTING ENGINEERS
46 EAST STREET
EAST WALPOLE, MA.**

