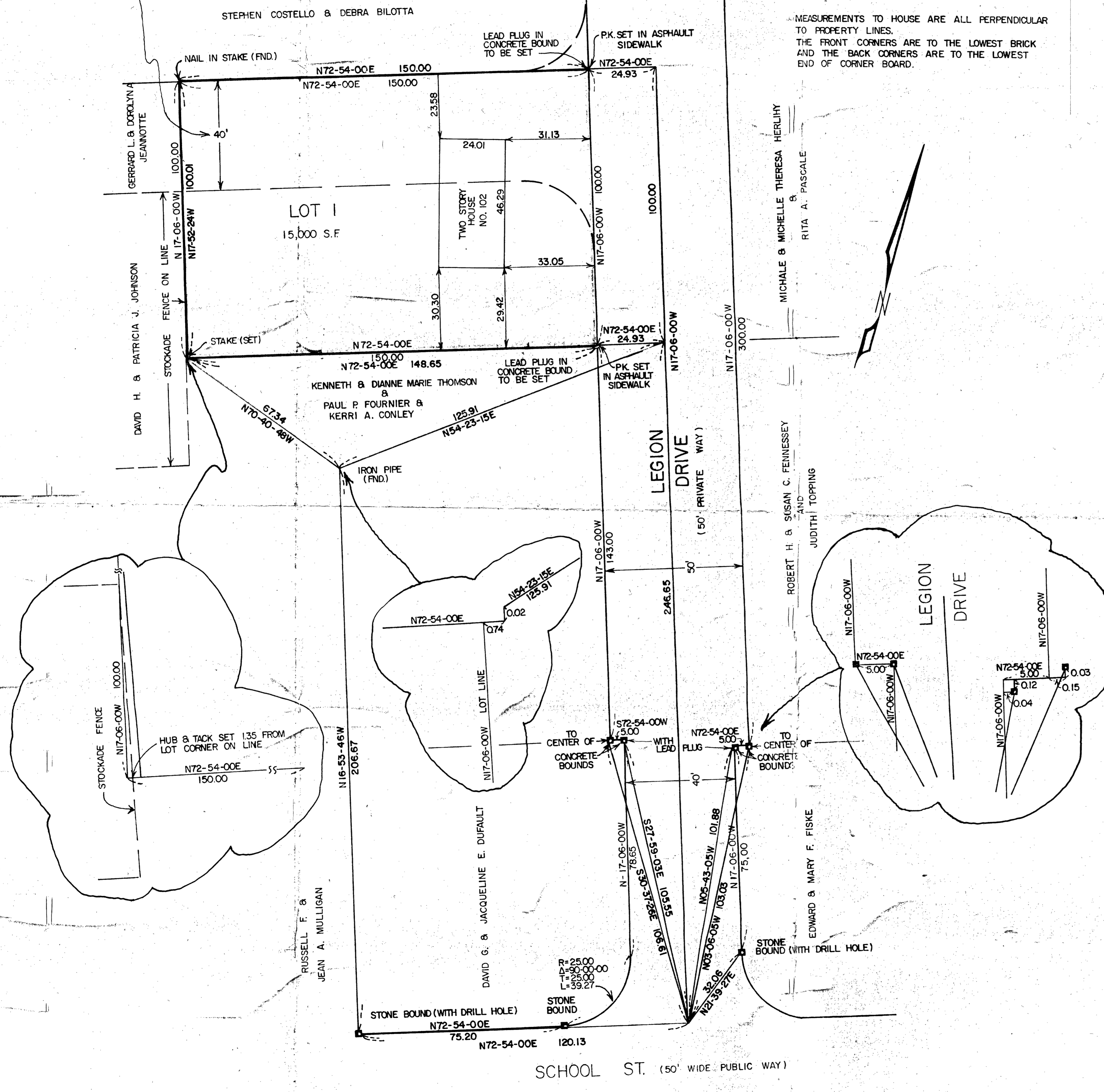


LAYOUT OF OAK ST. AS SHOWN ON A PLAN OF CRESTWOOD PARK, RECORDED AT THE NORFOLK COUNTY REGISTRY OF DEEDS. PLAN BOOK 190 PAGE 1317, OCT. 1954.



MEASUREMENTS TO HOUSE ARE ALL PERPENDICULAR TO PROPERTY LINES. THE FRONT CORNERS ARE TO THE LOWEST BRICK AND THE BACK CORNERS ARE TO THE LOWEST END OF CORNER BOARD.

PLANNING BOARD APPROVAL UNDER THE SUBDIVISION CONTROL LAW NOT REQUIRED.
PLAINVILLE PLANNING BOARD
Andrew Sawyer, Chairman
Thomas W. Watkins
Richard M. Stenfeldt
Steven J. Baker
Charles W. Swift
 DATE Dec 11, 1987

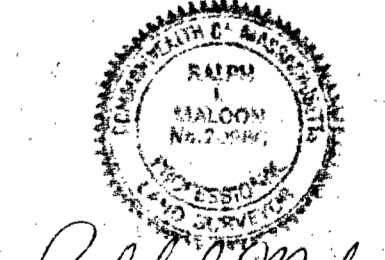
PLANNING BOARD APPROVAL UNDER THE SUBDIVISION CONTROL LAW NOT REQUIRED.
PLAINVILLE PLANNING BOARD
Andrew Sawyer, Chairman
Thomas W. Watkins
Richard M. Stenfeldt
Steven J. Baker
Charles W. Swift
 DATE 12-11-87



I CERTIFY THAT THE CONDITIONS ON THE GROUND ARE THE SAME NOW AS AT THE TIME OF THE ORIGINAL SURVEY.
Ralph I. Maloon June 24, 1988
 RALPH I. MALOON DATE

I CERTIFY THAT THIS SURVEY WAS MADE ON THE GROUND IN ACCORDANCE WITH THE LAND COURT INSTRUCTIONS OF 1971 ON OR BETWEEN FEBRUARY 2, 1987 AND FEBRUARY 19, 1987.
Ralph I. Maloon Feb 24, 1987
 RALPH I. MALOON DATE

PLAN OF LAND IN PLAINVILLE, MASS. BELONGING TO: LAND INC. 181 CHESTNUT ST. WRENTHAM, MASS. SCALE: 1" = 20' FEB. 24, 1987. RIM ENGINEERING CO. INC. RALPH I. MALOON 150 NO. MAIN ST. MANSFIELD, MASS.



Ralph I. Maloon Feb 24, 1987
 RALPH I. MALOON DATE

