

1903 LAYOUT
Street

Washington
(Public - 60' Wide - 1902 State Layout)

N/F Francis A. Will, trustee of Area Realty Trust II

N/F Anthony R. Perdigao

Lot Area = 87,377 ± S.F.
(2.005 Acres)

N/F Louis J. Baeta and Jean M. Baeta

N/F Larry A. King

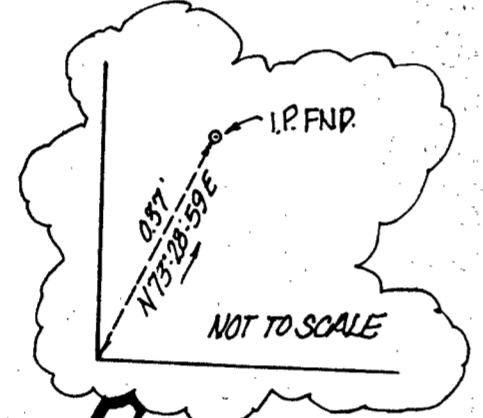
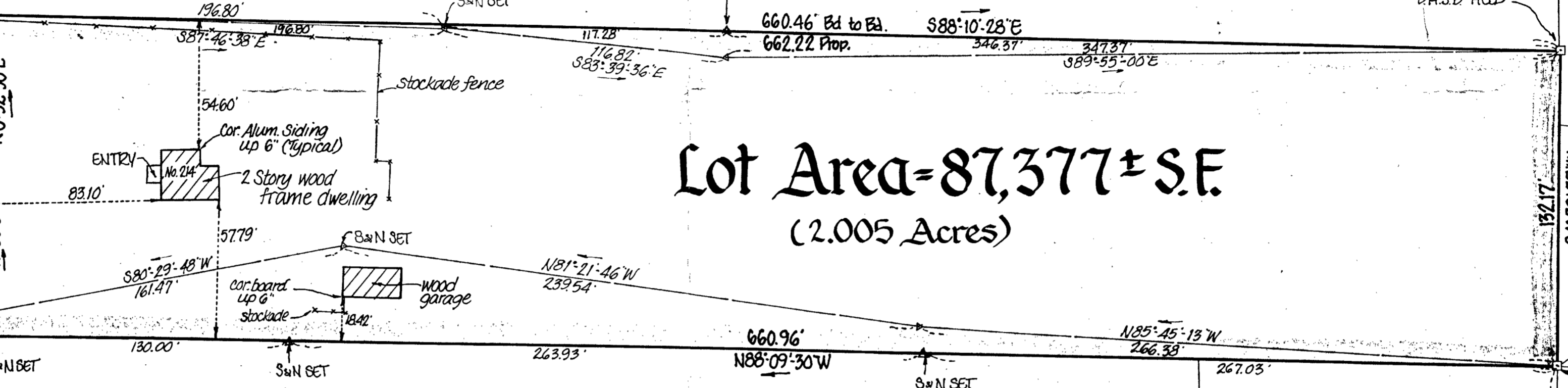
N/F John and Margaret Gomes

N/F John J. and Joanne M. Spano

B.C.S.B. HELD FOR LINE
(BOUND TO PROPERTY - 176')

D.H.S.B. HELD

D.H.S.B. HELD



I hereby certify that the property lines shown on this plan are the lines dividing existing ownerships, and the lines of streets and ways shown are those of public or private streets or ways already established, and that no new lines for division of existing ownership or for new ways are shown.

Paul T. Grover
Professional Land Surveyor

I hereby certify that this actual survey was made on the ground in accordance with the Land Court instructions of 1971 between February 22, 1988 and February 26, 1988.

date: March 2, 1988
Paul T. Grover
Professional Land Surveyor



Plan of Land
Stoughton Mass.
SCALE: 1" = 40' - MARCH 2, 1988
A Colonial
Land Surveying Co. Inc.
289 Hanover St. Hanover, Mass. 02339
No. 101786.

