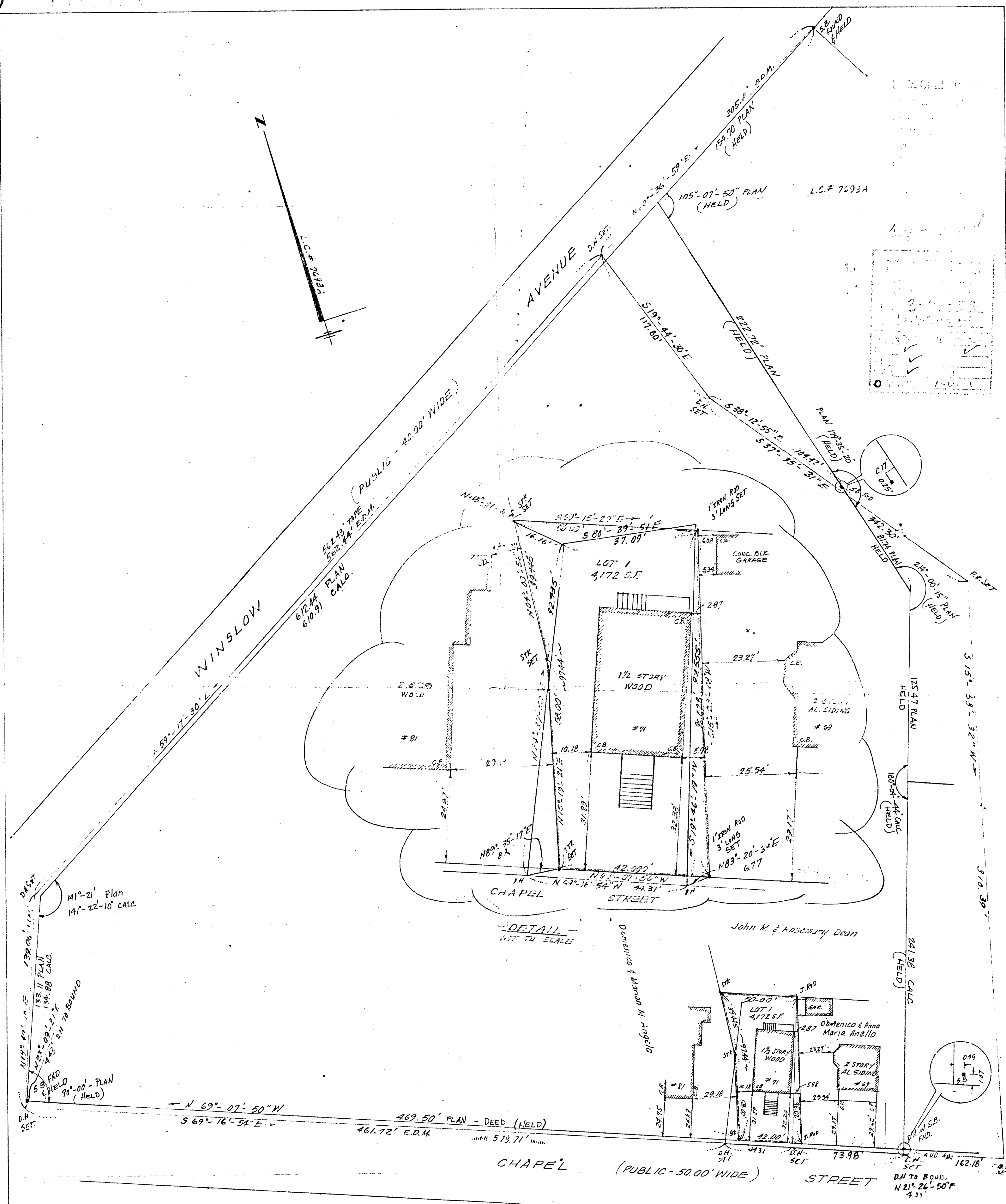


U-



"I HEREBY CERTIFY THAT THE PROPERTY LINES SHOWN ON THIS PLAN ARE THE LINES DIVIDING EXISTING OWNERSHIPS, AND THE LINES OF THE STREETS AND WAYS SHOWN ARE THOSE OF PUBLIC OR PRIVATE STREETS OR WAYS ALREADY ESTABLISHED, AND THAT NO NEW LINES FOR DIVISION OF EXISTING OWNERSHIP OR FOR NEW WAYS ARE SHOWN."

12-21-87
DATE
Daniel J. Morrissey R.P.L.S.

I CERTIFY THAT THIS ACTUAL SURVEY WAS MADE ON THE GROUND IN ACCORDANCE WITH THE LAND COURT INSTRUCTIONS OF 1971 CM OR BETWEEN NOV. 13, 1987 AND DEC. 4, 1987.

12-21-87
DATE
Daniel J. Morrissey R.P.L.S.

PLAN OF LAND
CHAPEL STREET, NORWOOD
NORFOLK COUNTY, MASS.

- PROPERTY LINE PLAN -

	SCALE 1"=40'	DATE 12-18-87	JOB NO. 17737
	CALC. W.G.	DRAWN G.K.H.	C.H.K.D. D.J.M.
YUNITS ENGINEERING CO., INC. D.W.G.A.S. CONSULTING ENGINEERS 11 TECHNICAL PARK DRIVE HOLBROOK, MASS. 02543.			

REVISED: 3-11-88

422,835-A