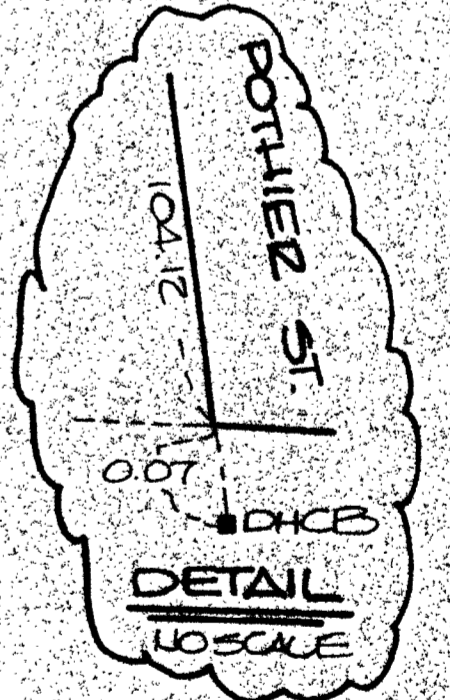
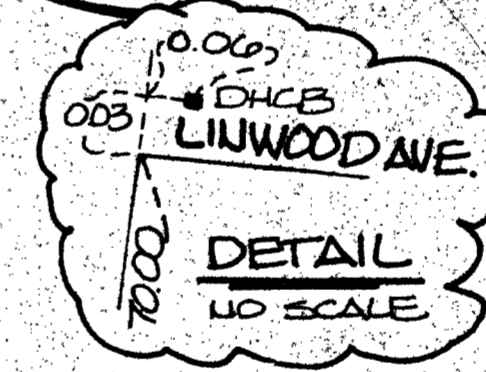
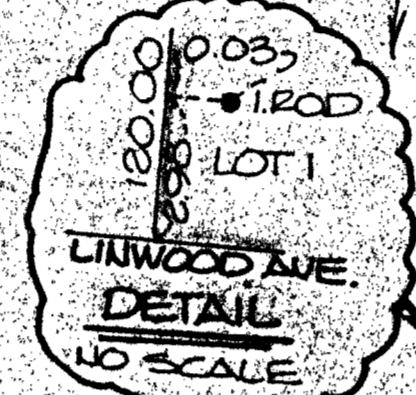
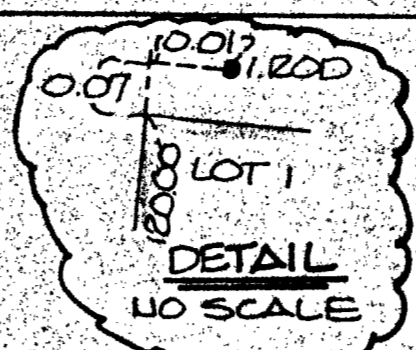
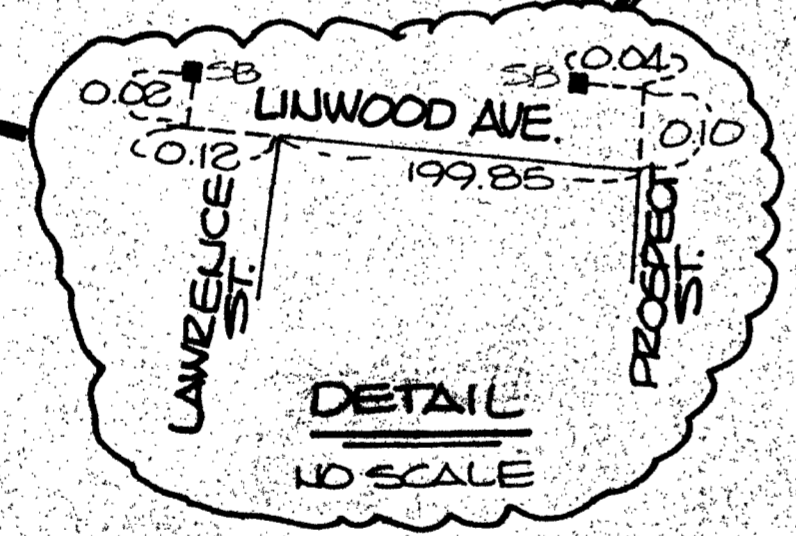
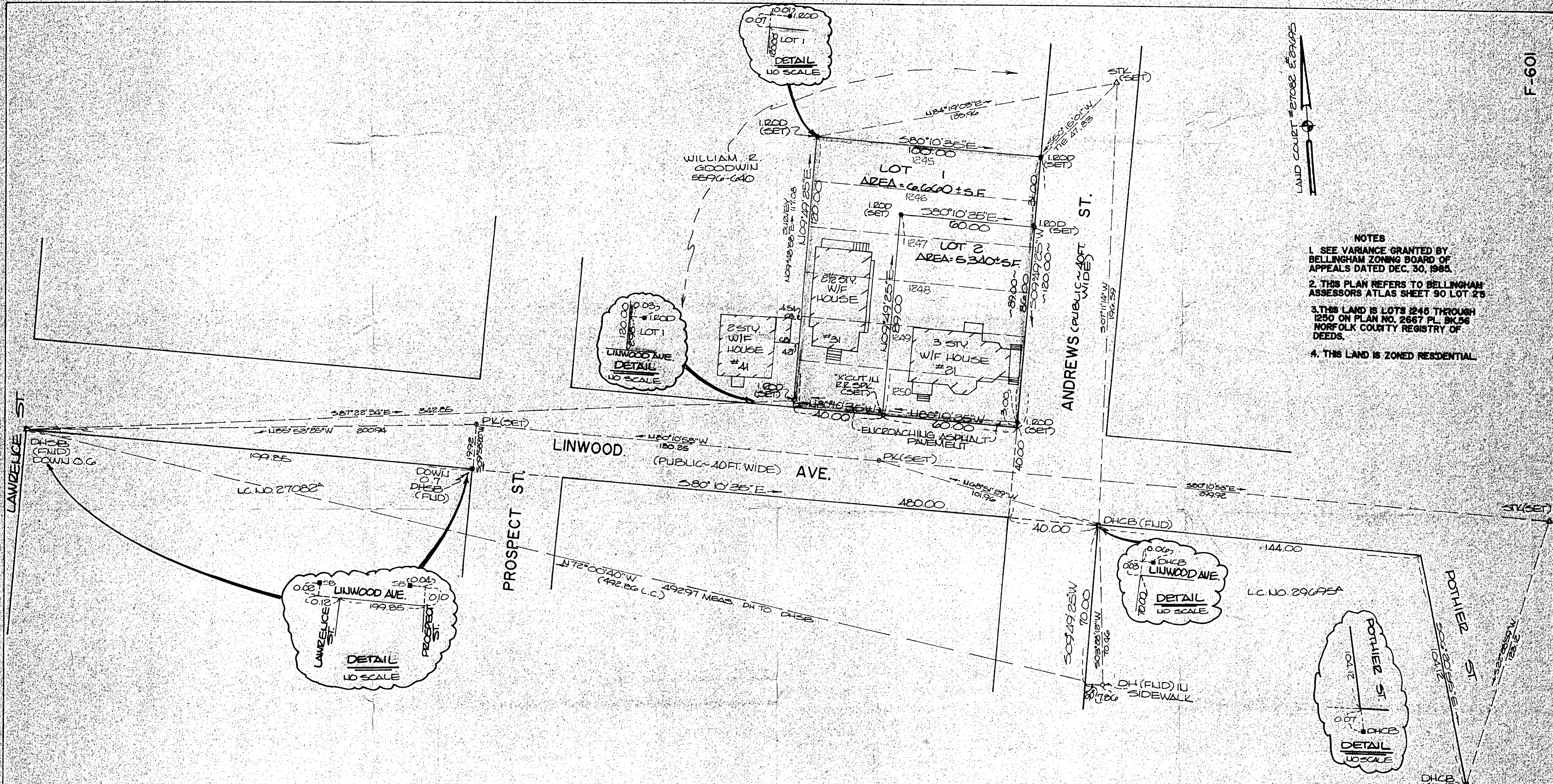


LAND COURT #27082 ET AL

- NOTES**
1. SEE VARIANCE GRANTED BY BELLINGHAM ZONING BOARD OF APPEALS DATED DEC. 30, 1985.
  2. THIS PLAN REFERS TO BELLINGHAM ASSESSORS ATLAS SHEET 90 LOT 2'S
  3. THIS LAND IS LOTS 1246 THROUGH 1250 ON PLAN NO. 2667 PL. BK.56 NORFOLK COUNTY REGISTRY OF DEEDS.
  4. THIS LAND IS ZONED RESIDENTIAL



I CERTIFY THAT THIS ACTUAL SURVEY WAS MADE ON THE GROUND IN ACCORDANCE WITH THE LAND COURT INSTRUCTIONS OF 1971 ON OR BETWEEN JAN. 27, 1986 AND APR. 22, 1987.



*Edward W. Chisholm*  
MAY 5, 1987  
SURVEY CHIEF OF PARTY

APPROVAL UNDER THE SUBDIVISION CONTROL LAW NOT REQUIRED BELLINGHAM PLANNING BOARD

*Gayle P. Morelli*  
*Mark Perlman*  
*Emile W. Niedzwiedzki*  
*James M. Fania*

DATE 5-14-87 BEING A MAJORITY

**PETITIONERS PLAN OF LAND IN BELLINGHAM, MASS.**  
PETITIONERS: GAYLE P. MORELLI & MARK PERLMAN, TRUSTEES OF M B M REALTY TRUST  
SCALE: 20 FT. TO AN INCH  
DATE: APRIL 29, 1987  
GUERRIERE & MALNON, INC. ENGINEERS AND LAND SURVEYORS 205 E. CENTRAL ST. FRANKLIN, MA.

