

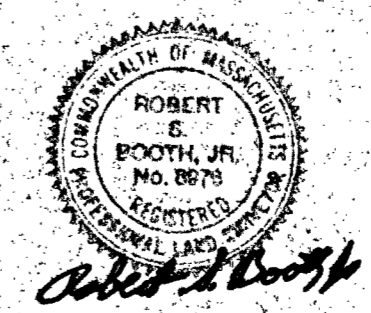
Sheet 1 of 2
 Plan of Land in Franklin, Mass.
 Scale 80 feet to an inch
 June 2, 1987
 Ernest W. Branch, Inc. Civil Engineers
 Munroe Building, 1245 Hancock St. Quincy

I hereby certify that the property lines shown on this plan are the lines dividing existing ownerships and the lines of the streets and ways shown are those of public or private streets or ways already established and that no new lines for division of existing ownership or for new ways are shown.

Robert A. Burt
 Registered Land Surveyor

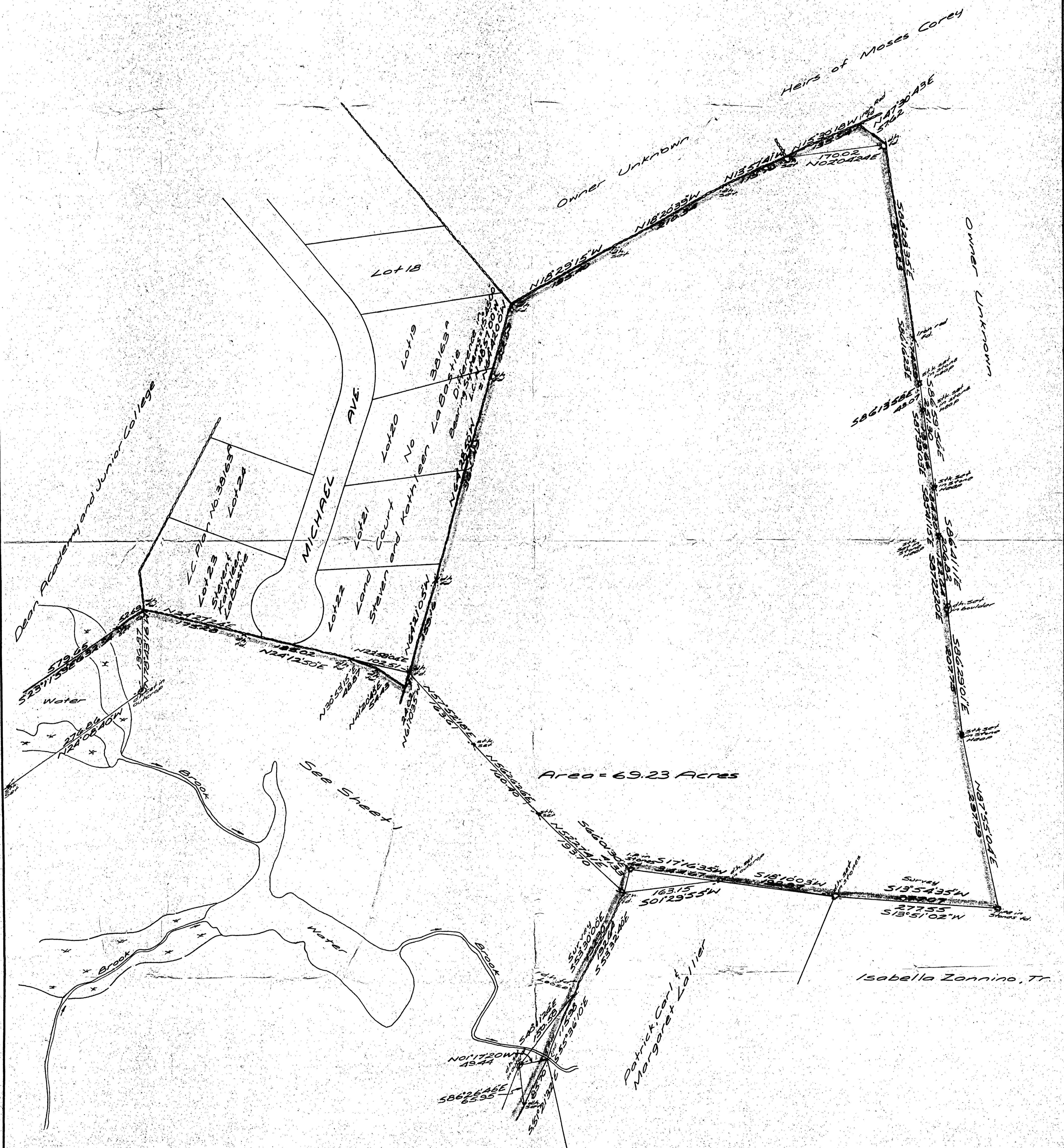
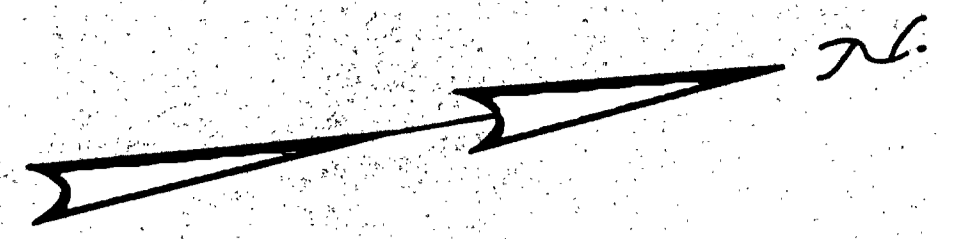
I certify that this actual survey was made on the ground in accordance with the Land Court instructions of 1971 during May, 1987.

Robert A. Burt
 Engineer



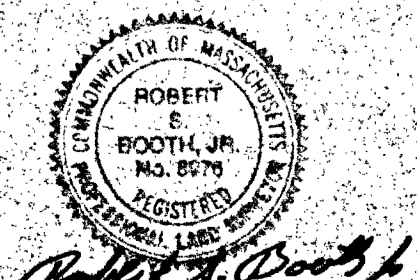
See Sheet 2

1921 County Layout
 LINCOLN (45th W. 1926)
 Public
 STREET 51302'10W
 1946 County Layout



Area = 69.23 Acres

Sheet 2 of 2
 Plan of Land in Franklin, Mass.
 Scale 80 feet to an inch
 June 2, 1987
 Ernest W. Branch Inc. Civil Engineers
 Munroe Building, 1245 Hancock St., Quincy



Robert S. Booth, Jr.