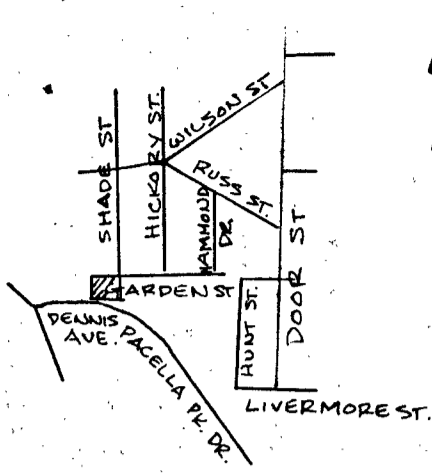


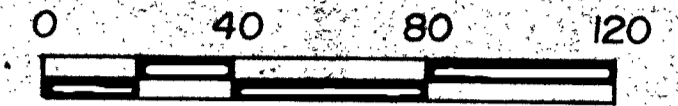
LOCUS SCALE: 1" = 800'



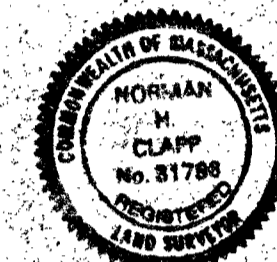
ZONING - RESIDENTIAL

# PLAN OF LAND LOT 1 GARDEN ST. RANDOLPH, MA

SCALE: 1" = 40' MAY 14, 1987



NORMAN H. CLAPP & ASSOCIATES  
93 N. MAIN ST.-STE. 3  
RANDOLPH, MA



14 May 87  
Norman H. Clapp

PETITIONERS:

MICHAEL PACELLA TRUST  
BK. 4622 PG. 428

I CERTIFY THAT THIS ACTUAL SURVEY WAS MADE ON THE GROUND IN ACCORDANCE WITH THE LAND COURT INSTRUCTIONS OF 1971 ON THE 21 NOVEMBER '86.

Norman H. Clapp, P.L.S.

14 May 1987

I CERTIFY THAT THE CONDITIONS ON THE GROUND ARE THE SAME NOW AS AT THE TIME OF THE ORIGINAL SURVEY.

Norman H. Clapp, P.L.S.

14 May 1987

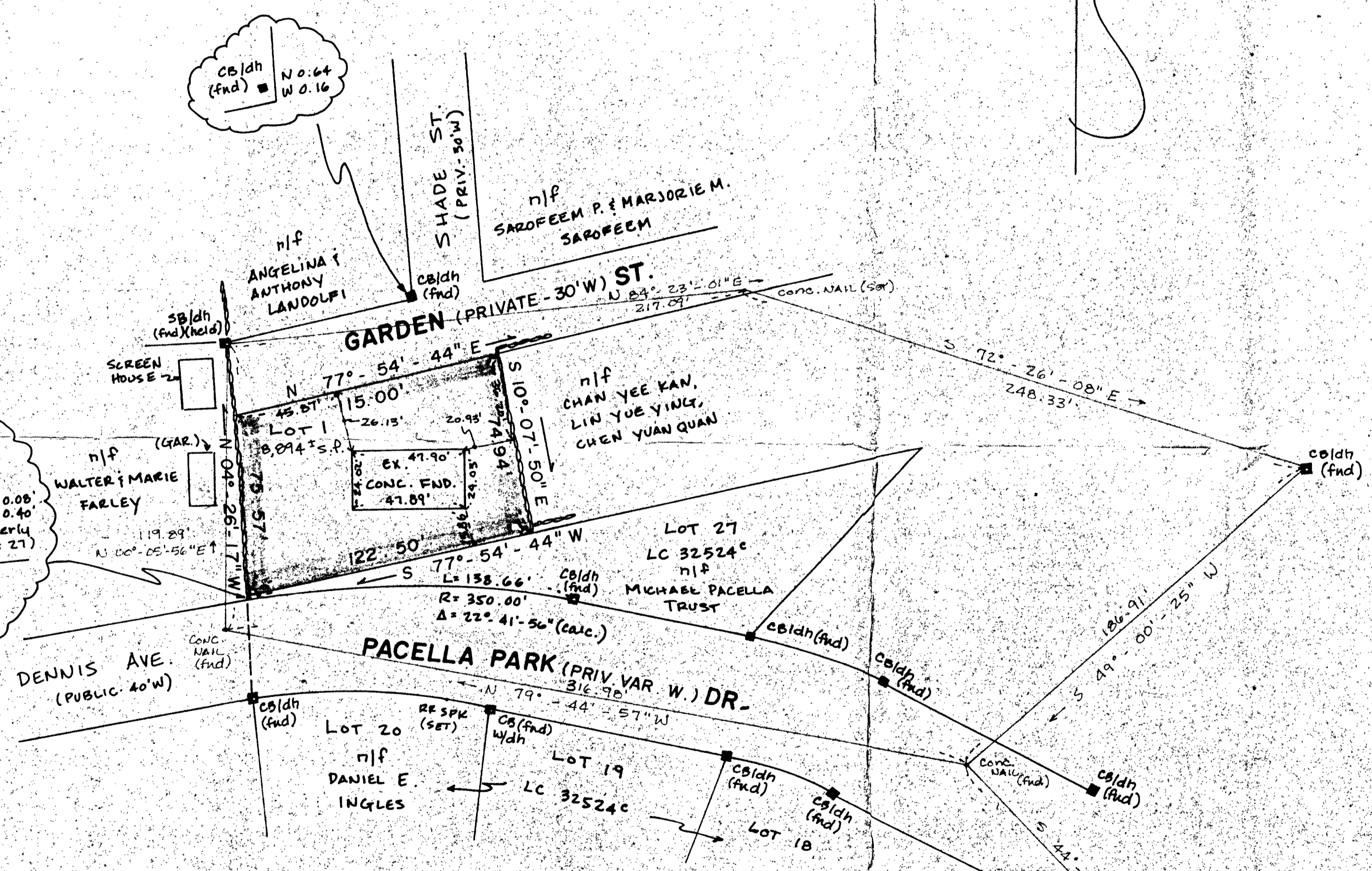
APPROVAL NOT REQUIRED UNDER THE SUBDIVISION CONTROL LAW.

RANDOLPH PLANNING BOARD

*Michael P. DeWangi, Chairman*  
*Robert J. ...*  
*...*  
*...*

LOT 1 & LOT 27 TO BE COMBINED  
FOR BUILDING PURPOSES

July 27, 1987



NOTE: FOUNDATION TIES TO TOP CORNER CONCRETE ⊥ TO R.