

LOTS 198, 199 & 200 TO BE COMBINED TO COMPRISE ONE LOT CONTAINING 10,624 S.F.

I CERTIFY THAT THIS ACTUAL SURVEY WAS MADE ON THE GROUND IN ACCORDANCE WITH THE LAND COURT INSTRUCTIONS OF 1971 ON OR BETWEEN OCTOBER 22, 1986 AND OCTOBER 30, 1986.

*Francis V. Sedemore*  
 DATE: Nov. 5, 1986



BELLINGHAM PLANNING BOARD  
 APPROVAL UNDER THE SUBDIVISION  
 CONTROL LAW NOT REQUIRED.

*Edmond T. Moore*  
*John P. Munn*  
*Allen E. Devior*  
*Emile W. Fudymanski*

DATE: 1-29-87

ZONING DISTRICT: RESIDENTIAL  
 ASSESSORS MAP 40 PARCEL 37

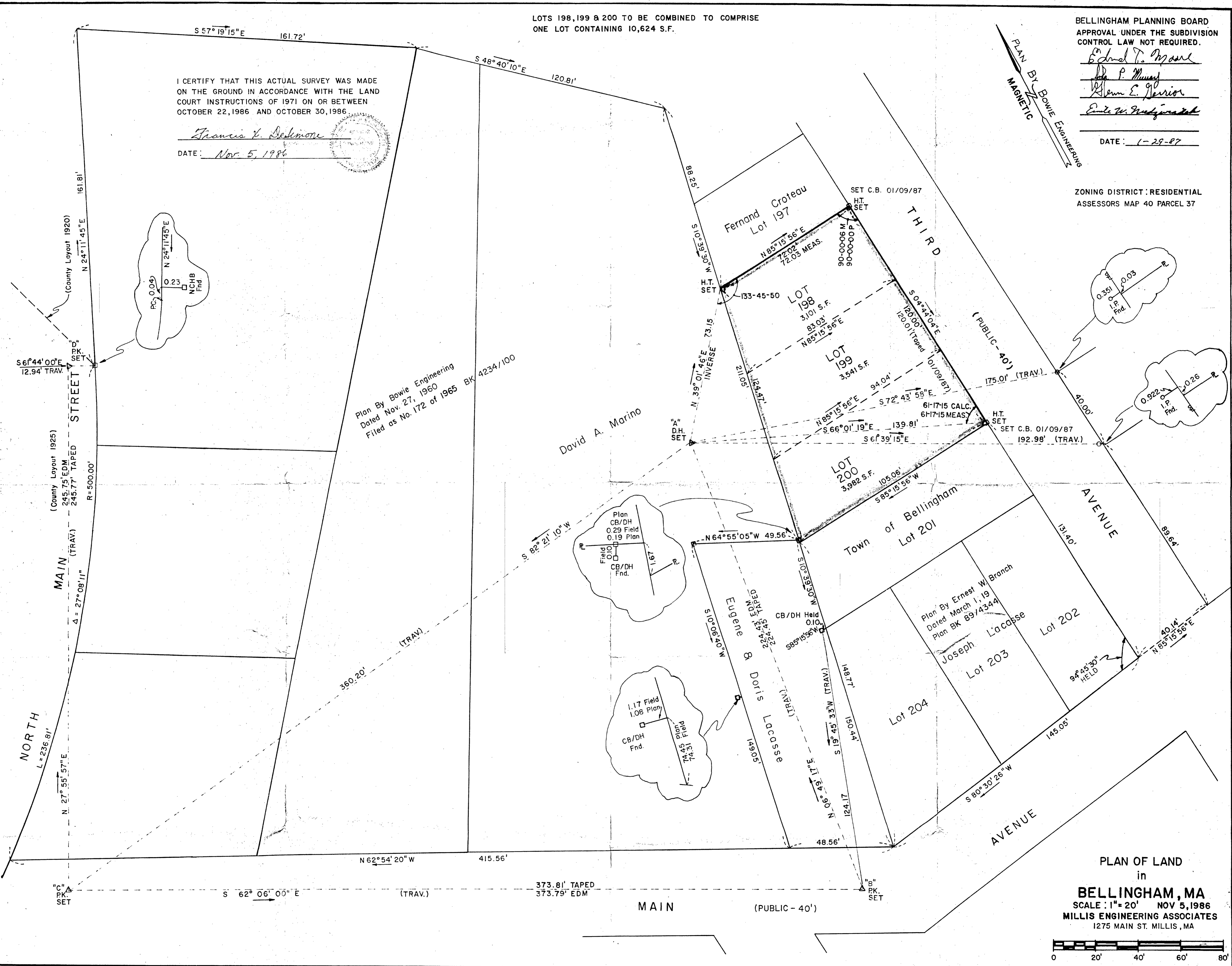
PLAN BY BOWIE ENGINEERING  
 MAGNETIC

Plan By Bowie Engineering  
 Dated Nov. 27, 1960  
 Filed as No. 172 of 1965 BK 4234/100

David A. Marino

Town of Bellingham  
 Lot 201

Plan By Ernest W. Branch  
 Dated March 1, 19  
 Plan BK 89/4344  
 Joseph Lacasse  
 Lot 203



PLAN OF LAND  
 in  
**BELLINGHAM, MA**  
 SCALE: 1"=20' NOV 5, 1986  
 MILLIS ENGINEERING ASSOCIATES  
 1275 MAIN ST. MILLIS, MA