

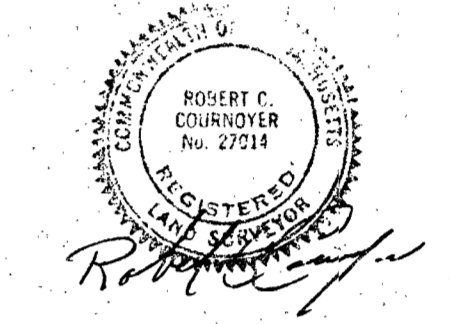
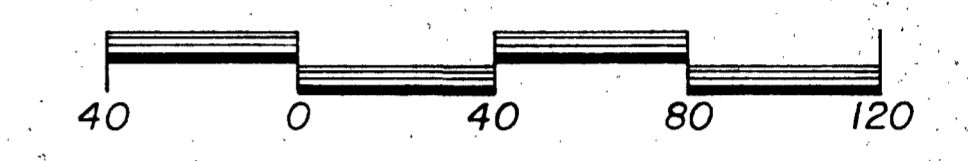
NOTES:
 1.) AREA BEING ASSESSOR'S PLAT 98, LOTS 69 & 71.
 2.) AREA = 44,000 S.F. OR 1.010 ACRES.
 3.) LOT NOS. 268 TO 284 & 319 TO 334 INCLUSIVE ARE FROM A PLAT ENTITLED "CENTRAL MANOR IN BELLINGHAM, MASS. BELONGING TO THE CITY AND SUBURBAN LAND TRUST, 87 WEYBOSSET ST., PROV. R.I. BY STEPHEN C. KENNEDY, ENGINEER, MAY, 1916."

PLAN OF LAND
 FOR
MARC H. & JOYCE M. MASSON

BELLINGHAM, MASS.

JAN., 1986 REVISED: APRIL 30, 1986
 REVISED: JULY 17, 1986

SCALE: 1 INCH EQUALS 40 FEET



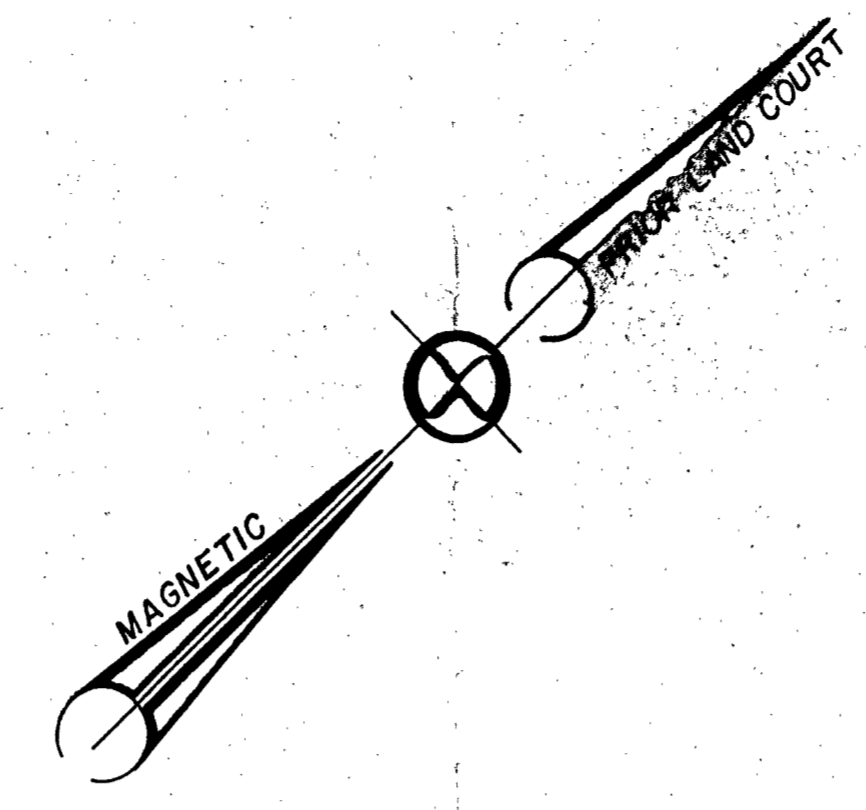
I CERTIFY THAT THIS ACTUAL SURVEY WAS MADE ON THE GROUND IN ACCORDANCE WITH THE LAND COURT INSTRUCTIONS OF 1971 ON OR BETWEEN DEC. 12, 1985 AND DEC. 17, 1985.

Robert C. Cournoyer
 REGISTERED LAND SURVEYOR 2/3/86
 DATE

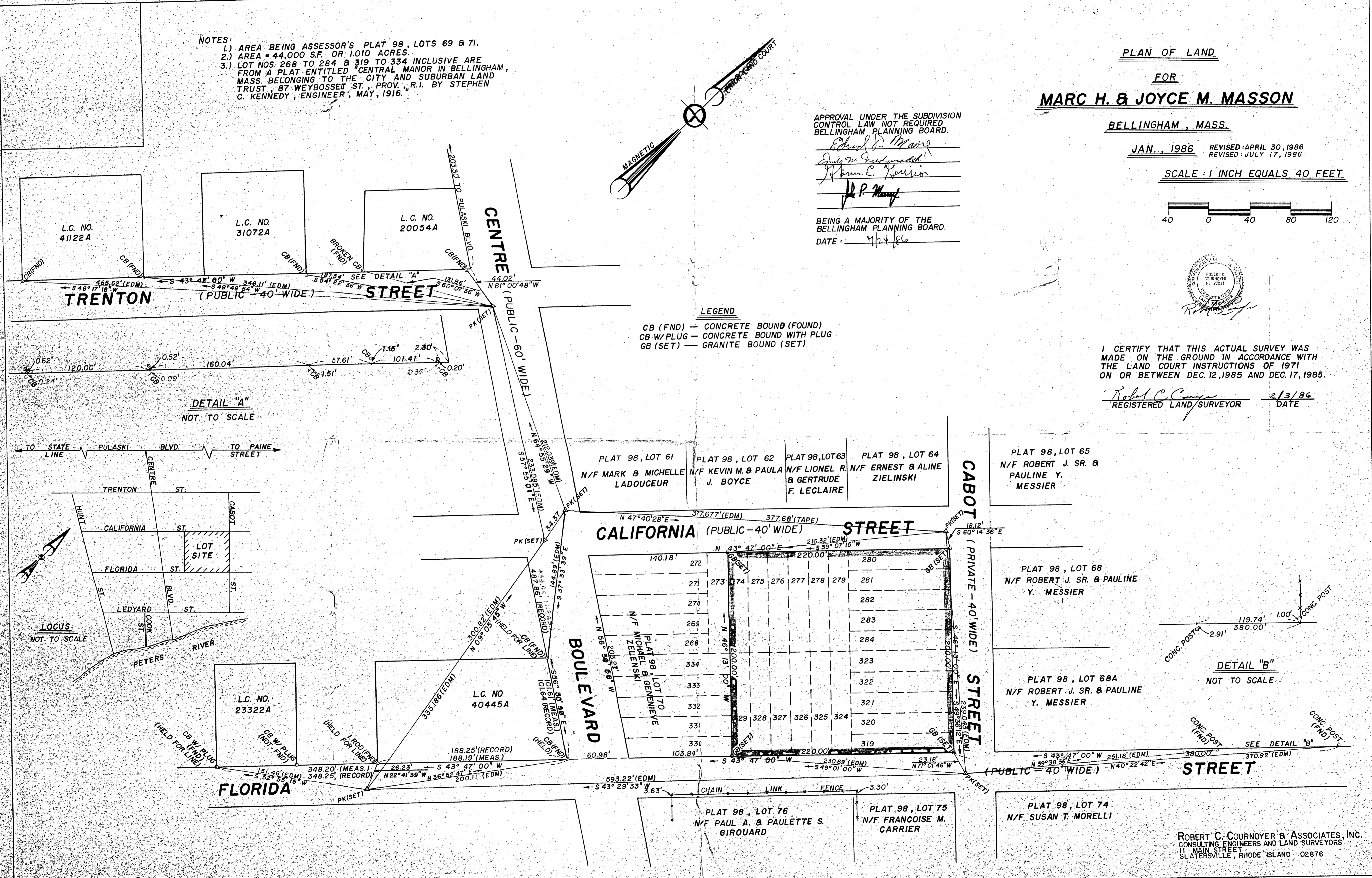
APPROVAL UNDER THE SUBDIVISION CONTROL LAW NOT REQUIRED BELLINGHAM PLANNING BOARD.

Edward J. Masson
Emily M. Masson
John E. Harrison
J.P. Masson

BEING A MAJORITY OF THE BELLINGHAM PLANNING BOARD.
 DATE: 4/1/86



LEGEND
 CB (FND) — CONCRETE BOUND (FOUND)
 CB-W/PLUG — CONCRETE BOUND WITH PLUG
 GB (SET) — GRANITE BOUND (SET)

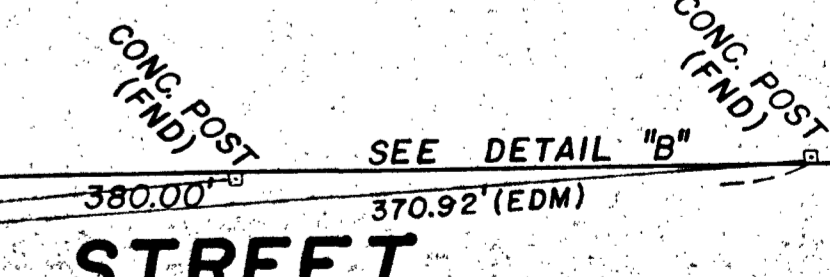
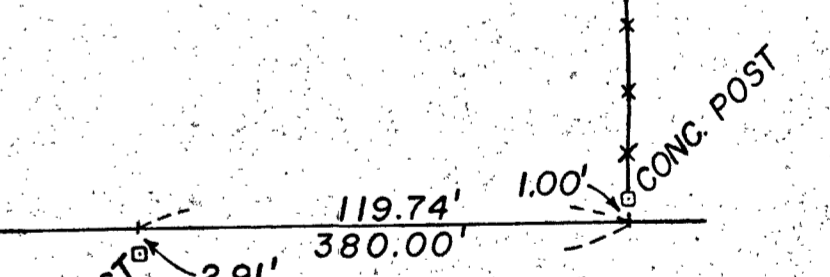


DETAIL "A"
 NOT TO SCALE

DETAIL "B"
 NOT TO SCALE

TO STATE LINE PULASKI BLVD TO PAINE STREET

LOCUS NOT TO SCALE



ROBERT C. COURNOYER & ASSOCIATES, INC.
 CONSULTING ENGINEERS AND LAND SURVEYORS
 11 MAIN STREET
 SLATERSVILLE, RHODE ISLAND 02876