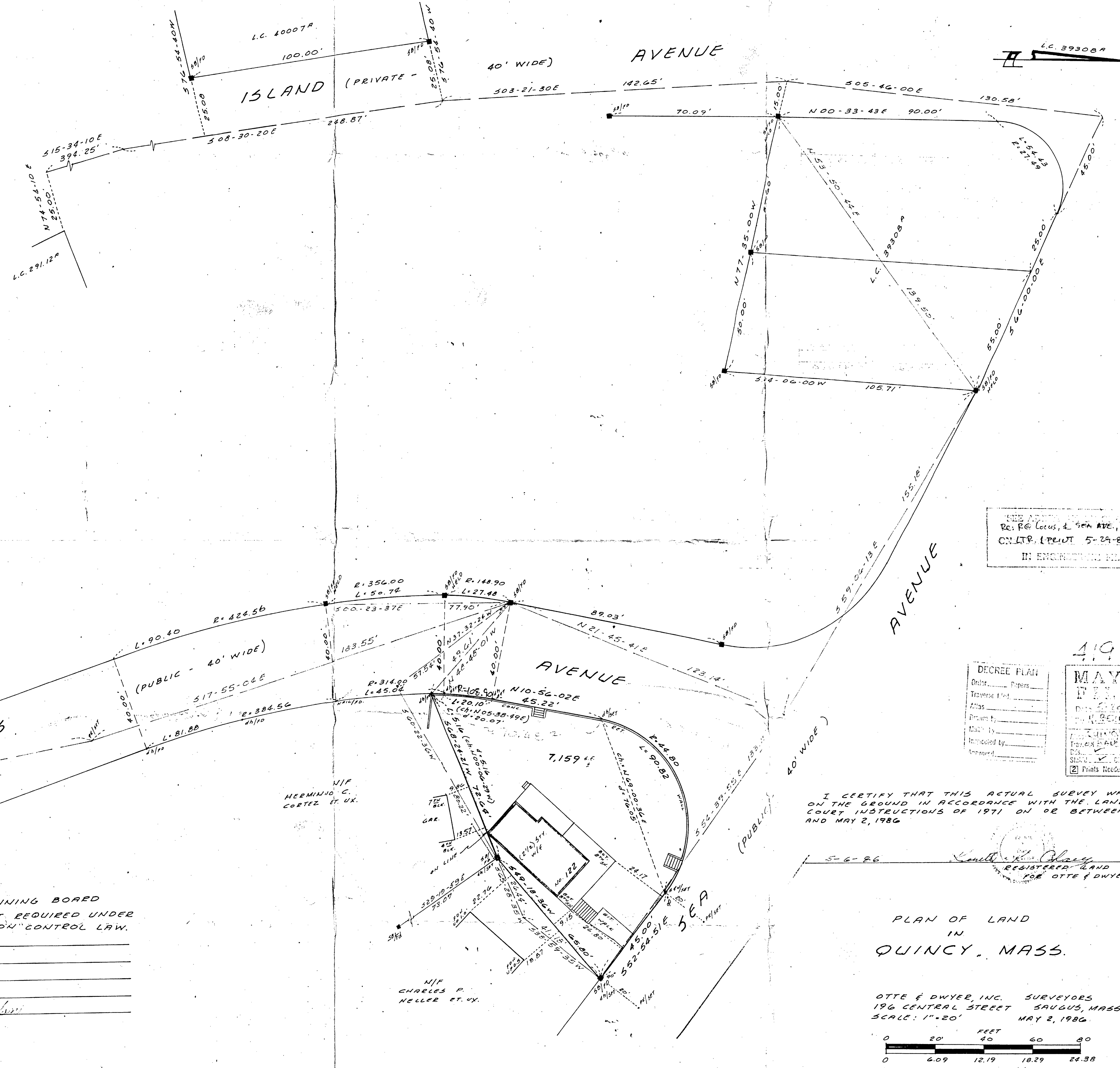


TRAVERSE

DISTANCE	BEARING	NORTH	EAST
133.75	S54-39-55E	2002.576	2245.738
41.18	S38-59-35W	1925.224	2328.935
26.44	S65-28-35W	1882.243	2304.881
80.22	S60-22-36W	1842.592	2235.147
57.54	N37-32-24W	1888.217	2200.087
123.14	N21-45-41E	2002.576	2245.738

LOT CLOSURE

DISTANCE	BEARING	NORTH	EAST
45.00	S52-54-51E	1952.282	2318.880
65.80	S49-18-36W	1925.146	2354.778
72.64	S68-24-21W	1882.243	2304.881
5.16	N00-06-29W	1855.508	2237.336
20.07	N05-38-49E	1860.670	2237.326
45.22	N10-56-02E	1880.642	2239.301
76.05	N69-00-36E	1925.041	2247.878
		1952.282	2318.880



SEE ADJACENT PLANS
 Re: R.C. Lucas, et. al. 90th AVE.,
 CON.L.P. PLANT 5-24-86
 IN ENGINEERING BOOKS N.B.

41950 A

DEGREE PLAN	Order	Papers
	Traverse	1st
	Atlas	
	Drawn by	
	Checked by	
	Approved by	
	State	MASS.
	Prints Needed	

I CERTIFY THAT THIS ACTUAL SURVEY WAS MADE ON THE GROUND IN ACCORDANCE WITH THE LAND COURT INSTRUCTIONS OF 1971 ON OR BETWEEN MAR. 19 AND MAY 2, 1986

5-6-86
 Kenneth J. O'Leary
 REGISTERED LAND SURVEYOR
 FOR OTTE & DWYER, INC.

QUINCY PLANNING BOARD
 APPROVAL NOT REQUIRED UNDER
 THE SUBDIVISION CONTROL LAW.

[Signature]
 2-11-86
 ATC

PLAN OF LAND
 IN
 QUINCY, MASS.

OTTE & DWYER, INC. SURVEYORS
 196 CENTRAL STREET SAUGUS, MASS.
 SCALE: 1"=20' MAY 2, 1986

