

SEARS, ROEBUCK AND CO.

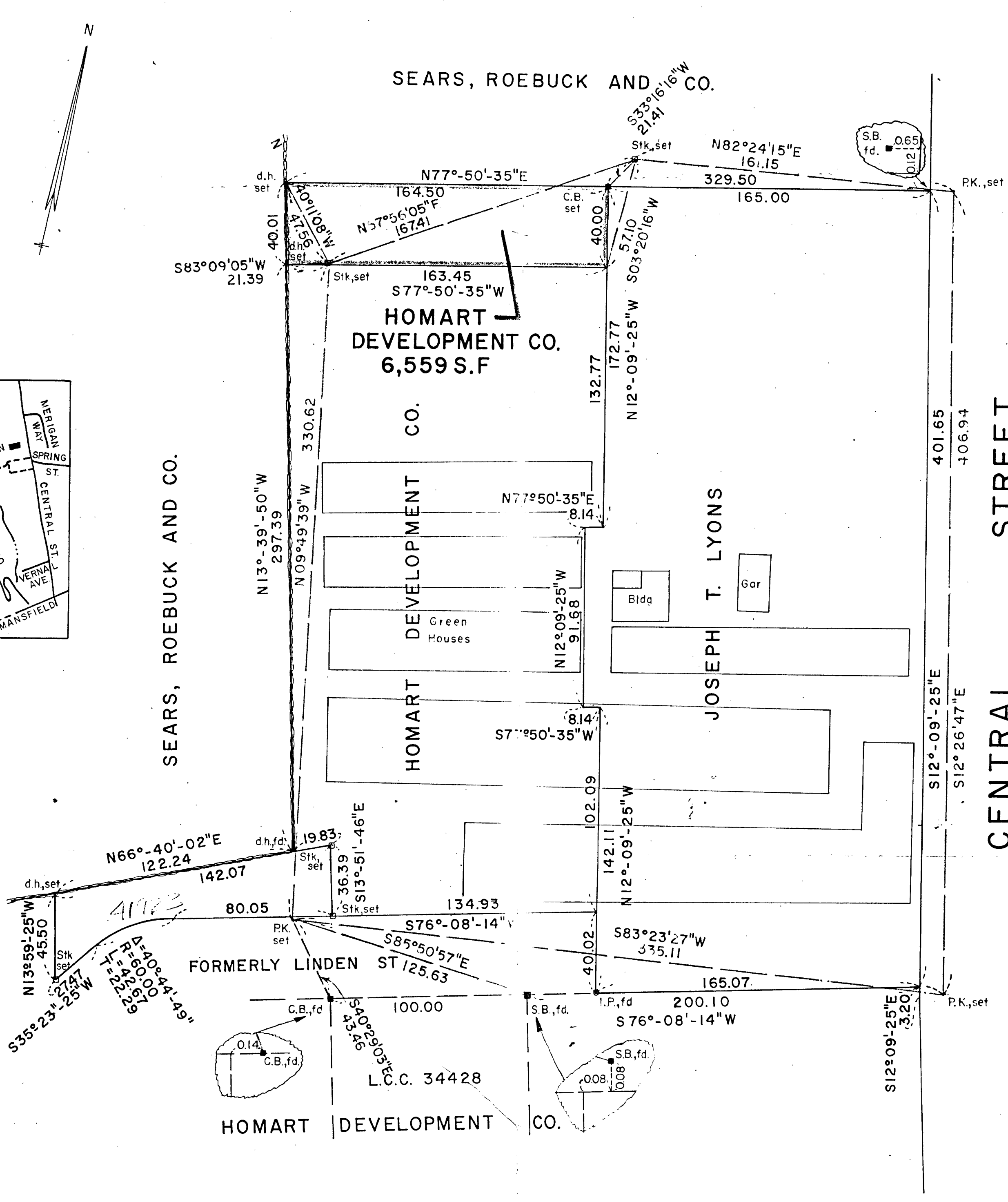
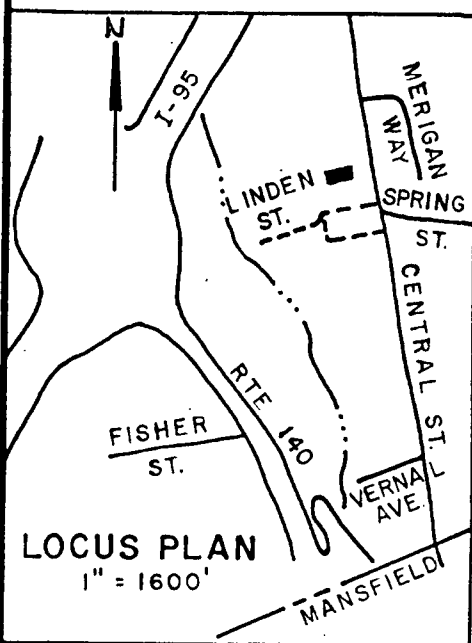
HOMART DEVELOPMENT CO.
6,559 S.F.

HOMART DEVELOPMENT CO.

HOMART DEVELOPMENT CO.

HOMART DEVELOPMENT CO.

JOSEPH T. LYONS



APPROVAL NOT REQUIRED UNDER THE SUBDIVISION CONTROL LAW. FOXBOROUGH PLANNING BOARD. DATE APR 3, 1986

Handwritten signatures and names: *William K. Buehler*, *John C. Coppola*, *John C. Peterson*, *F. Sheehan*

41922A

4-9-86
C.B. FOREMAN
Foreman II 5/1/86
C.B. 0.08

I CERTIFY THAT THE PROPERTY LINES SHOWN ON THIS PLAN ARE THE LINES DIVIDING EXISTING OWNERSHIPS, AND THE LINES OF THE STREETS AND WAYS SHOWN ARE THOSE OF PUBLIC OR PRIVATE STREETS OR WAYS ALREADY ESTABLISHED, AND THAT NO NEW LINES FOR DIVISION OF EXISTING OWNERSHIP OR FOR NEW STREETS OR WAYS ARE SHOWN.

William K. Buehler
Professional Land Surveyor

I CERTIFY THAT THIS ACTUAL SURVEY WAS MADE ON THE GROUND IN ACCORDANCE WITH THE LAND COURT INSTRUCTIONS OF 1971 ON OR BETWEEN OCT. 20, 1985 AND FEB. 14, 1986.

William K. Buehler
Professional Land Surveyor

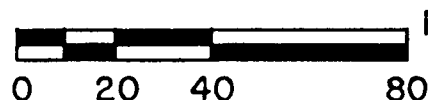
PLAN OF LAND IN
FOXBOROUGH, MASS.

SCALE 1" = 40' FEB. 18, 1986

BAY COLONY SURVEYING INC.

4 CARMINE AVENUE

FOXBOROUGH, MA.



REVISED 3-28-86