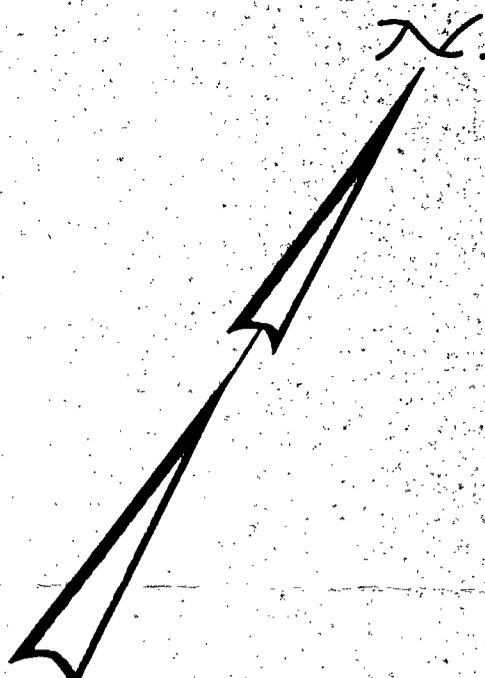
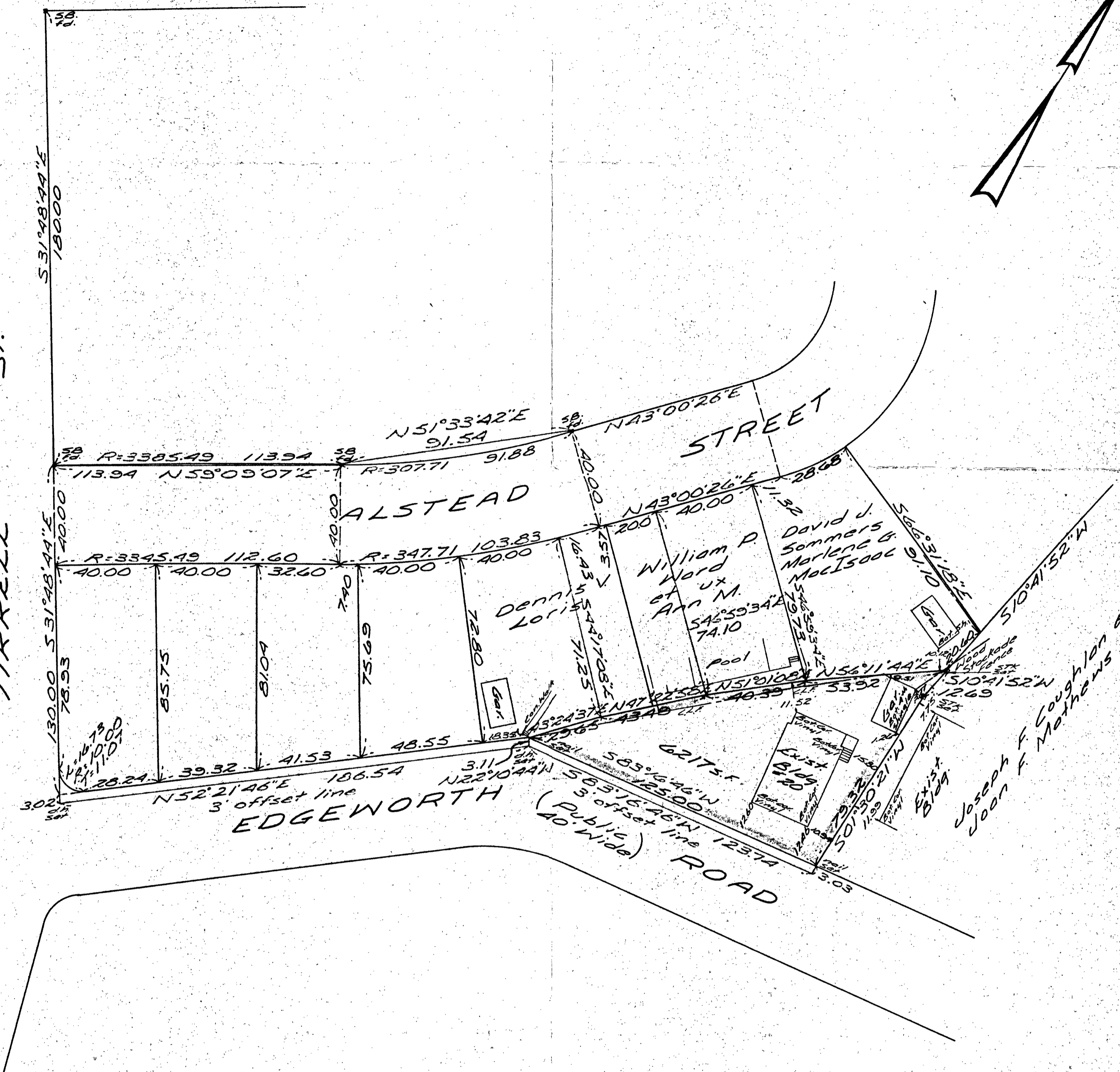


QUINCY SHORE DR.

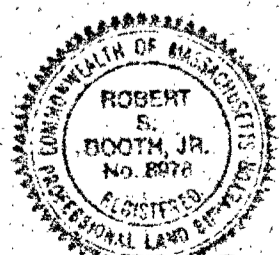


TIRRELL ST.



Plan of Land in Quincy, Mass.
 Scale 30 feet to an inch
 Dec. 31, 1985
 Ernest W. Branch Inc, Civil Engineers
 Munroe Building, 1245 Hancock St, Quincy

I certify that this actual survey was made on
 the ground in accordance with the Land Court
 Instructions of 1971 during Dec. 20, 1985
 Robert S. Booth, Jr. Engineer



Robert S. Booth, Jr.

APPROVAL UNDER SUBDIVISION
 CONTROL LAW NOT REQUIRED
 DATE: January 1986

James C. Alden

Planning Director
 City of Quincy