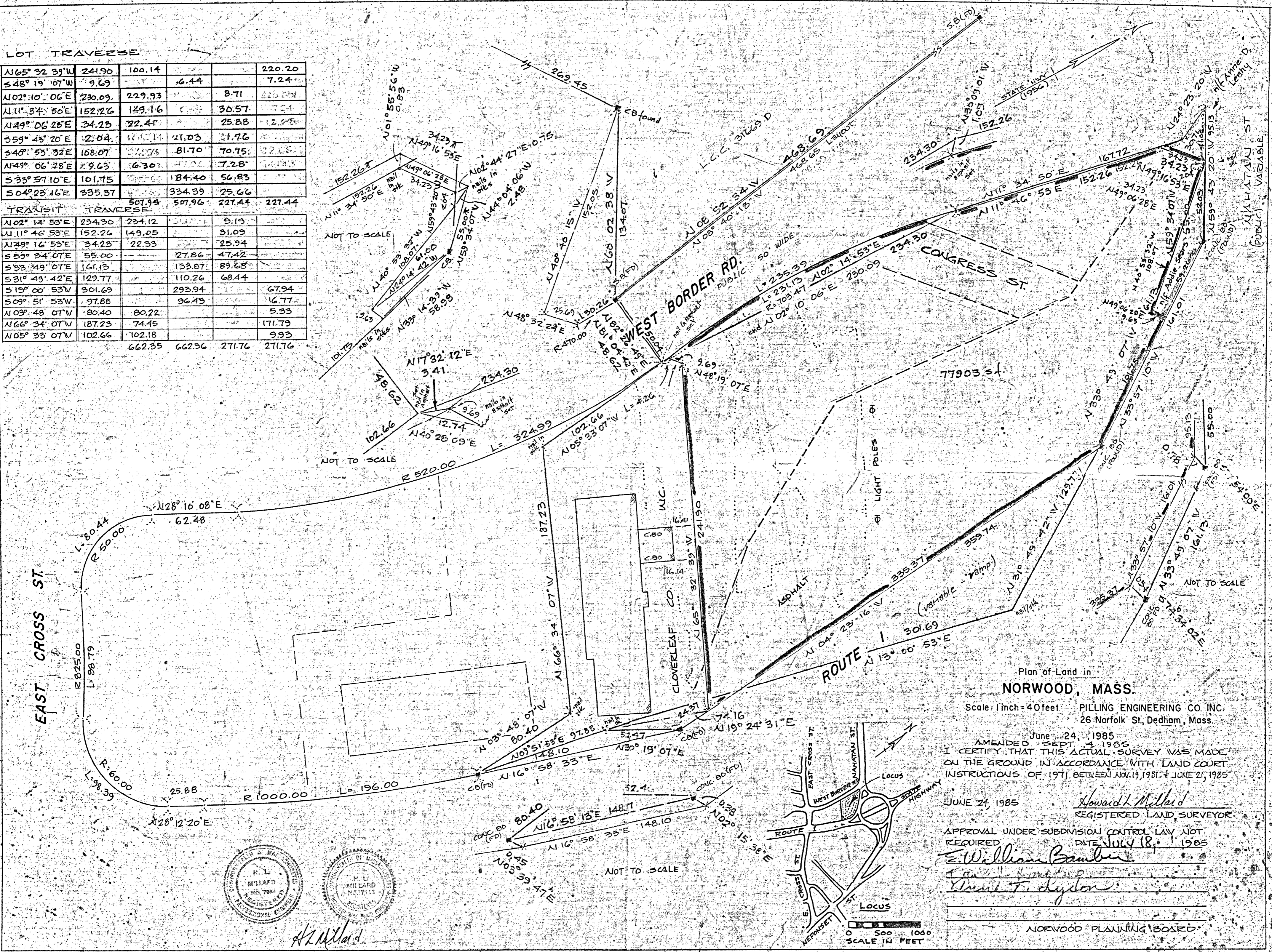


LOT TRAVERSE

N105° 32' 39" W	241.90	100.14		220.20
S48° 19' 07" W	9.69		6.44	7.24
N102° 10' 06" E	230.09	229.93		8.71
N111° 34' 50" E	152.26	149.16		30.57
N149° 06' 25" E	34.23	22.41		25.88
S59° 43' 20" E	12.04	17.14	21.03	11.76
S46° 53' 32" E	168.07	173.76	81.70	70.75
N49° 06' 28" E	9.63	6.30		7.28
S33° 57' 10" E	101.75		184.40	56.83
S04° 23' 16" E	335.97	334.39		25.66
TRAVISIT TRAVERSE		507.94	507.96	227.44
N102° 14' 53" E	234.30	234.12		9.19
N111° 46' 53" E	152.26	149.05		31.09
N149° 16' 53" E	34.23	22.33		25.94
S59° 34' 07" E	55.00		27.86	47.42
S33° 49' 07" E	161.13		133.87	89.68
S31° 49' 42" E	129.77		110.26	68.44
S13° 00' 53" W	301.69		293.94	67.94
S09° 51' 53" W	97.88		96.43	16.77
N103° 48' 07" W	80.40	80.22		5.33
N166° 34' 07" W	187.23	74.45		171.79
N105° 33' 07" W	102.66	102.18		9.93
		662.35	662.36	271.76

N102° 14' 53" E	234.30	234.12		9.19
N111° 46' 53" E	152.26	149.05		31.09
N149° 16' 53" E	34.23	22.33		25.94
S59° 34' 07" E	55.00		27.86	47.42
S33° 49' 07" E	161.13		133.87	89.68
S31° 49' 42" E	129.77		110.26	68.44
S13° 00' 53" W	301.69		293.94	67.94
S09° 51' 53" W	97.88		96.43	16.77
N103° 48' 07" W	80.40	80.22		5.33
N166° 34' 07" W	187.23	74.45		171.79
N105° 33' 07" W	102.66	102.18		9.93
		662.35	662.36	271.76



Plan of Land in  
**NORWOOD, MASS.**

Scale 1 inch = 40 feet  
PILLING ENGINEERING CO. INC.  
26 Norfolk St., Dedham, Mass.

AMENDED June 24, 1985  
I CERTIFY THAT THIS ACTUAL SURVEY WAS MADE  
ON THE GROUND IN ACCORDANCE WITH LAND COURT  
INSTRUCTIONS OF 1971 BETWEEN NOV. 19, 1981 & JUNE 21, 1985

JUNE 24, 1985  
*Howard L. Millard*  
REGISTERED LAND SURVEYOR

APPROVAL UNDER SUBDIVISION CONTROL LAW NOT  
REQUIRED DATE JULY 18, 1985

*E. William Bamber*  
*Wm. F. Chyler*

NORWOOD PLANNING BOARD

