

PLAN OF LAND IN  
**WEYMOUTH**  
 NORFOLK COUNTY, MASS.  
 SCALE: 1"=40' JUNE 4, 1984

PAUL J. KNIGHT  
 REGISTERED LAND SURVEYOR  
 WEYMOUTH, MASS.

I CERTIFY THAT THIS ACTUAL SURVEY  
 WAS MADE ON THE GROUND IN  
 ACCORDANCE WITH THE LAND COURT  
 INSTRUCTIONS OF 1971 BETWEEN  
 DEC. 17, 1983 & MAY 5, 1984.

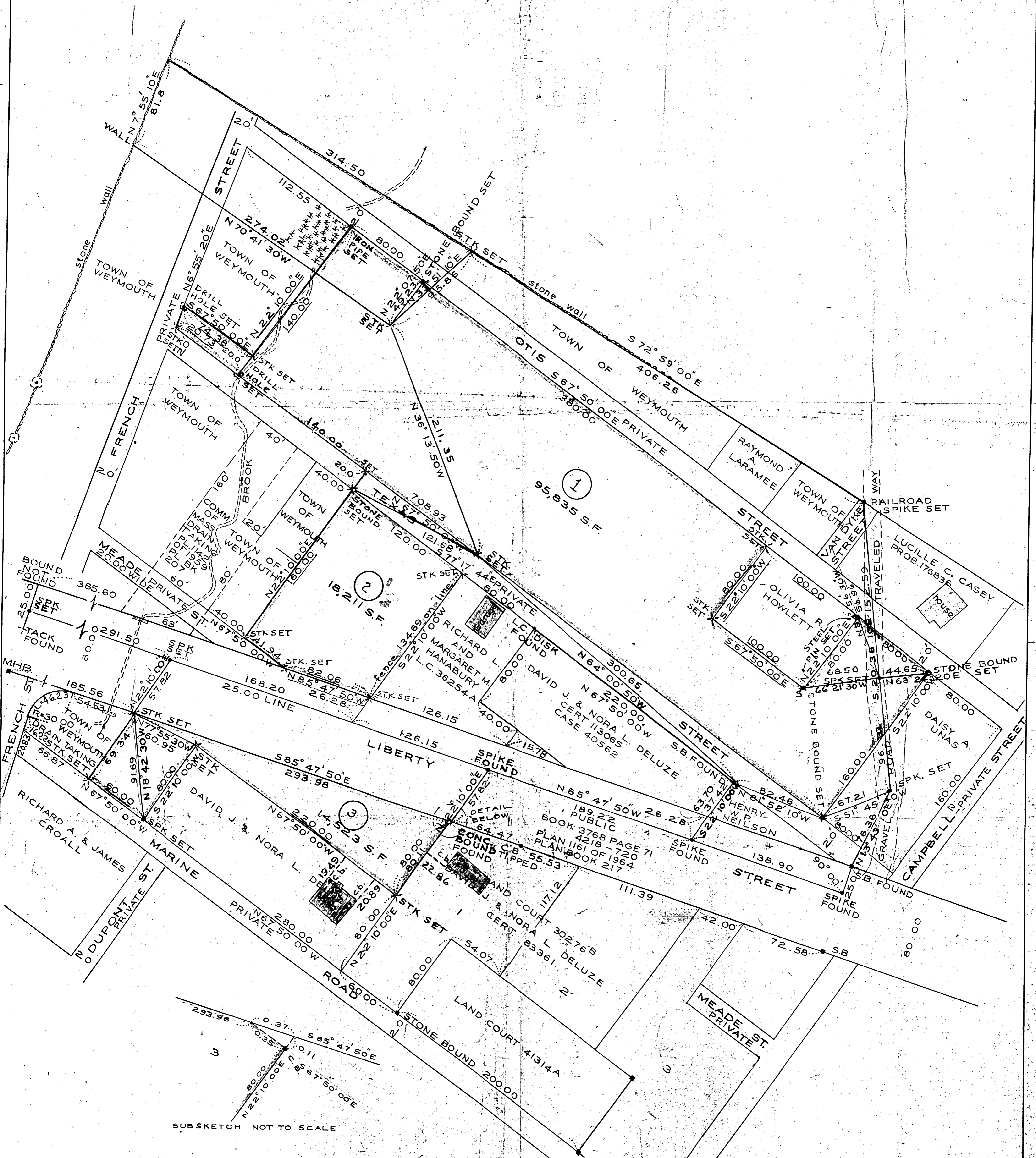
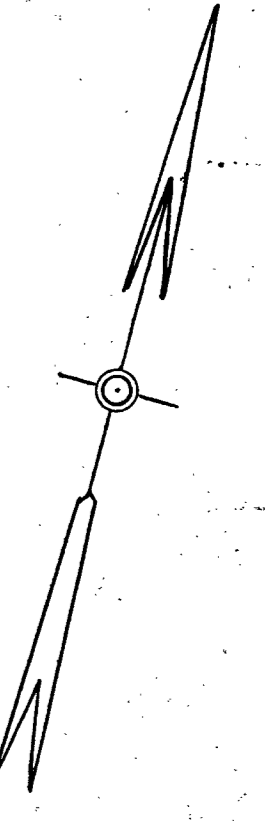
*Paul J. Knight*  
 56 GRIFFIN TERRACE  
 WEYMOUTH, MASS.



I CERTIFY THAT THE CONDITIONS ON THE  
 GROUND ARE THE SAME NOW AS AT THE  
 TIME OF THE ORIGINAL SURVEY.  
 ALL BOUNDS SHOWN IN PLACE.  
 JUNE 4, 1985 *Paul J. Knight*

TOWN OF WEYMOUTH  
**PLANNING BOARD**  
 APPROVAL UNDER THE SUBDIVISION  
 CONTROL LAW NOT REQUIRED

*John J. Angelos*  
 12/10/85



SUBSKETCH NOT TO SCALE