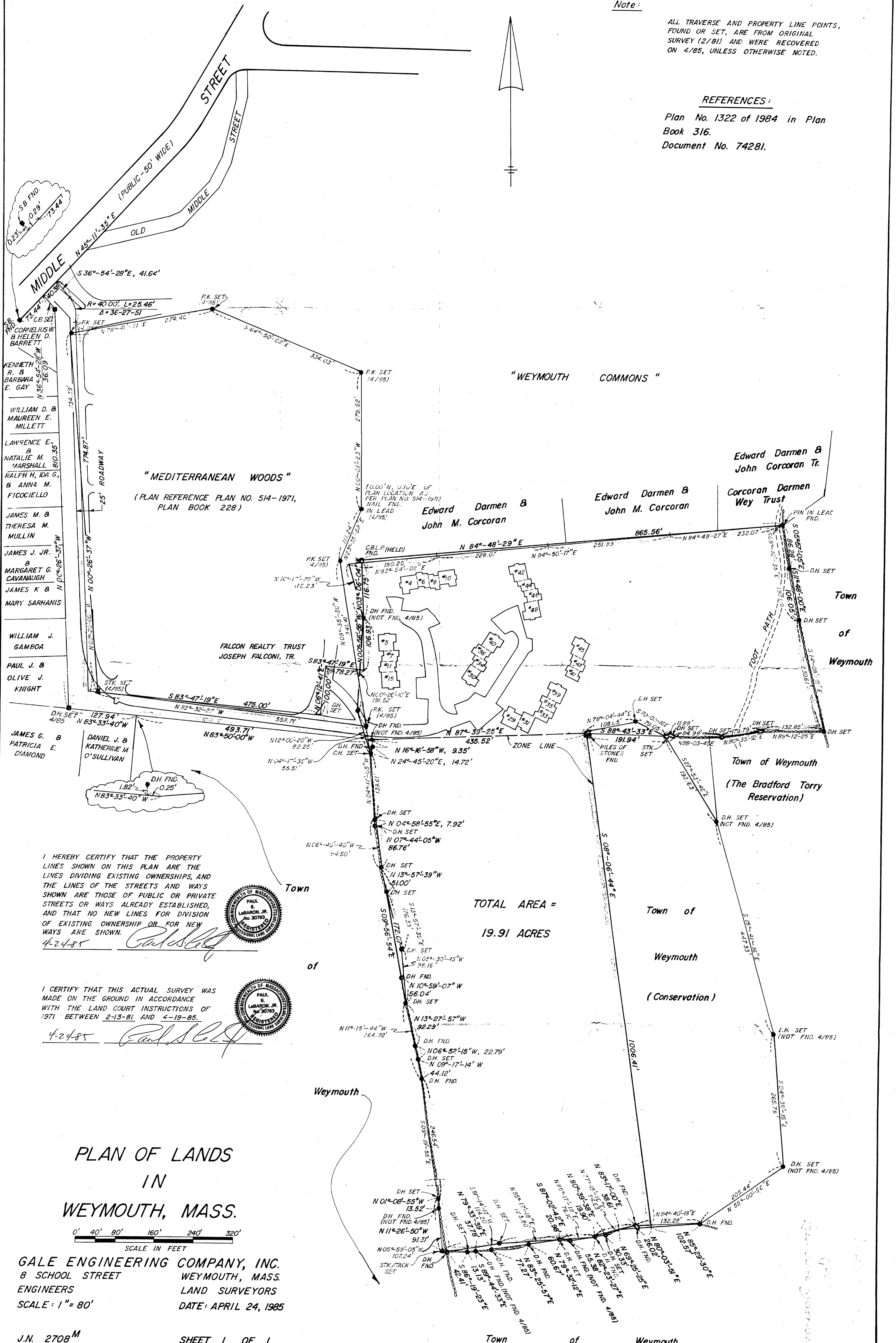


Note:

ALL TRAVERSE AND PROPERTY LINE POINTS, FOUND OR SET, ARE FROM ORIGINAL SURVEY (2/81) AND WERE RECOVERED ON 4/85, UNLESS OTHERWISE NOTED.

REFERENCES:

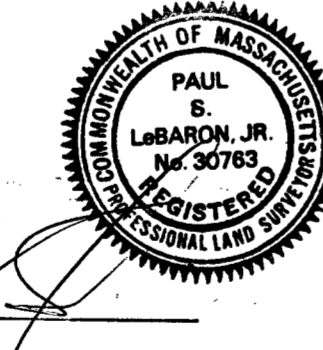
Plan No. 1322 of 1984 in Plan Book 316.
Document No. 74281.



I HEREBY CERTIFY THAT THE PROPERTY LINES SHOWN ON THIS PLAN ARE THE LINES DIVIDING EXISTING OWNERSHIPS, AND THE LINES OF THE STREETS AND WAYS SHOWN ARE THOSE OF PUBLIC OR PRIVATE STREETS OR WAYS ALREADY ESTABLISHED, AND THAT NO NEW LINES FOR DIVISION OF EXISTING OWNERSHIP OR FOR NEW WAYS ARE SHOWN.
4-24-85 *Paul S. Labaron, Jr.*



I CERTIFY THAT THIS ACTUAL SURVEY WAS MADE ON THE GROUND IN ACCORDANCE WITH THE LAND COURT INSTRUCTIONS OF 1971 BETWEEN 2-13-81 AND 6-19-85.
4-24-85 *Paul S. Labaron, Jr.*



TOTAL AREA =
19.91 ACRES

PLAN OF LANDS
IN
WEYMOUTH, MASS.

0' 40' 80' 160' 240' 320'
SCALE IN FEET

GALE ENGINEERING COMPANY, INC.
8 SCHOOL STREET WEYMOUTH, MASS.
ENGINEERS LAND SURVEYORS
SCALE: 1" = 80'
DATE: APRIL 24, 1985