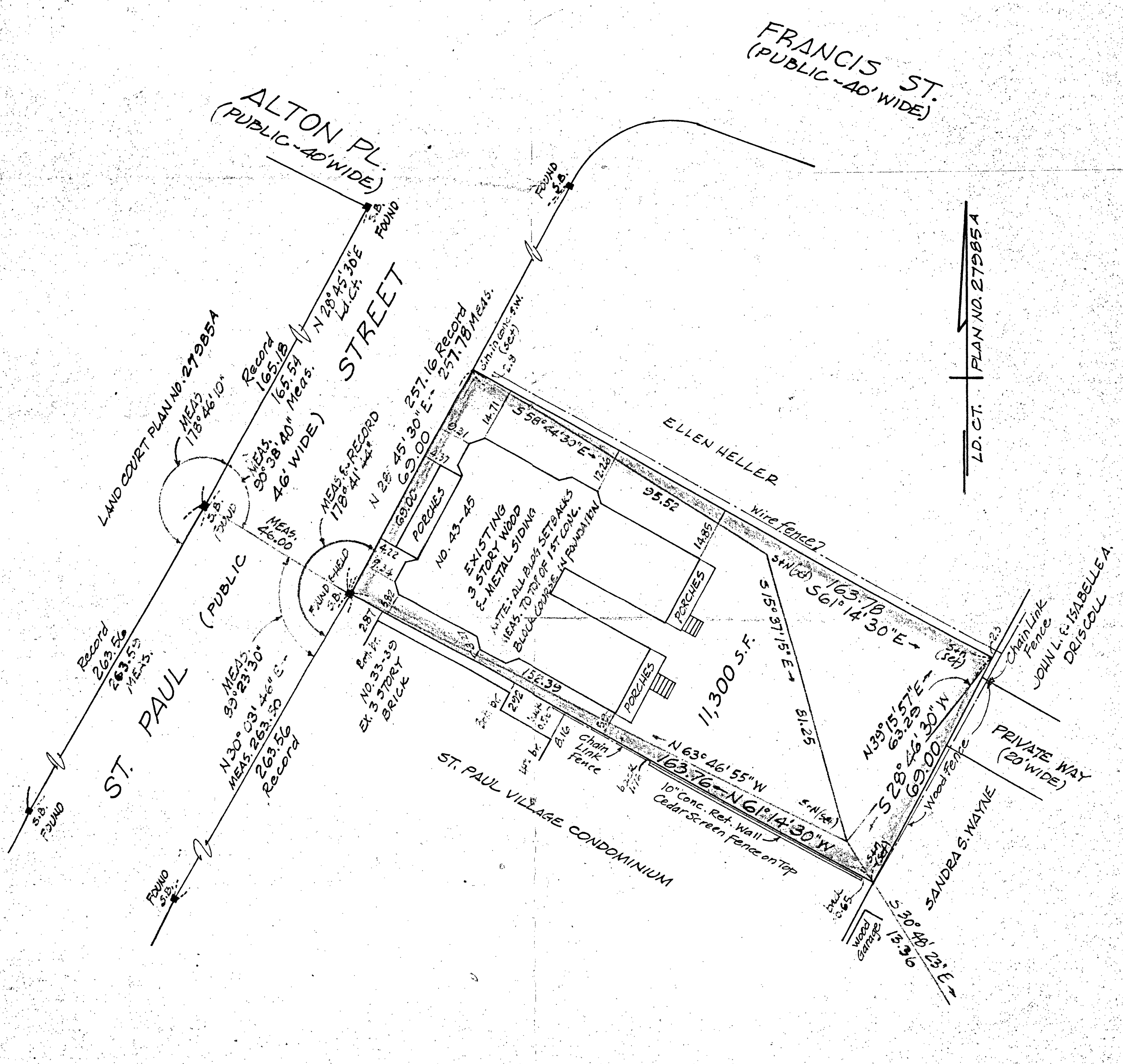


FIELD TRAVERSE

BEARING	DIST.	LATITUDE		DEPARTURE	
		N	S	E	W
N 28° 45' 30" E	69.00	60.49		33.20	
S 58° 44' 30" E	95.52		49.57	81.65	
S 15° 37' 15" E	81.25		78.24	21.87	
N 63° 46' 55" W	152.39	67.32			136.71
		127.81	127.81	136.72	136.71

PROPERTY LINE TRAVERSE

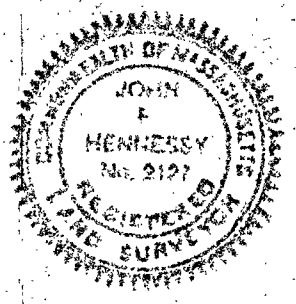
BEARING	DIST.	LATITUDE		DEPARTURE	
		N	S	E	W
N 28° 45' 30" E	69.00	60.49		33.20	
S 61° 14' 30" E	163.78		78.80	60.49	
S 28° 46' 30" W	69.00		60.48		33.21
N 61° 14' 30" W	163.76	78.79			60.49
		139.28	139.28	93.69	93.70



I HEREBY CERTIFY THAT THE PROPERTY LINES SHOWN ON THIS PLAN ARE THE LINES DIVIDING EXISTING OWNERSHIPS, AND THE LINES OF THE STREETS AND WAYS SHOWN ARE THOSE OF PUBLIC OR PRIVATE STREETS OR WAYS ALREADY ESTABLISHED, AND THAT NO NEW LINES FOR DIVISION OF EXISTING OWNERSHIP OR FOR NEW WAYS ARE SHOWN.

I CERTIFY THAT THIS ACTUAL SURVEY WAS MADE ON THE GROUND IN ACCORDANCE WITH THE LAND COURT INSTRUCTIONS OF 1971 ON APRIL 9, 1984 AND ON MAY 8, 1984.

DATE: MAY 8, 1984 John F. Hennessy



PLAN OF LAND  
 BROOKLINE, MASS.  
 SCALE - 1 IN. = 20 FT. MAY 8, 1984  
 JOHN F. HENNESSY, C.E.  
 4 CYPRESS STREET BROOKLINE, MASS.