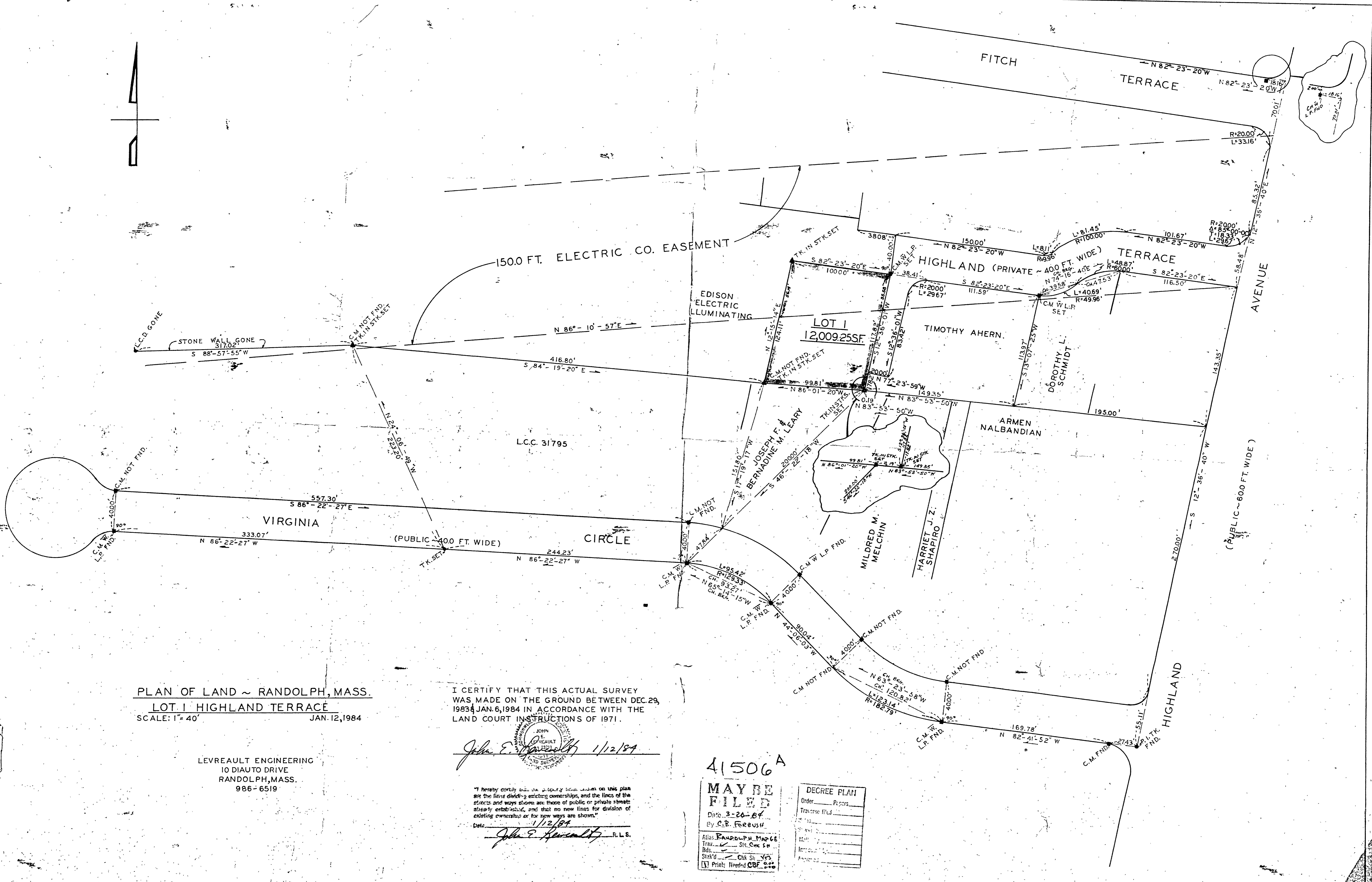
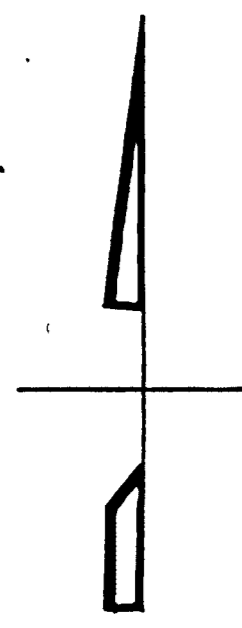


H-1506-A



PLAN OF LAND ~ RANDOLPH, MASS.
LOT 1 HIGHLAND TERRACE
SCALE: 1" = 40'
JAN. 12, 1984

LEVREAU ENGINEERING
10 DIAUTO DRIVE
RANDOLPH, MASS.
986-6519

I CERTIFY THAT THIS ACTUAL SURVEY
WAS MADE ON THE GROUND BETWEEN DEC. 29,
1983 & JAN. 6, 1984 IN ACCORDANCE WITH THE
LAND COURT INSTRUCTIONS OF 1971.

John E. Heavly 1/12/84
JOHN E. HEAVLY
REGISTERED PROFESSIONAL SURVEYOR
STATE OF MASSACHUSETTS
No. 10519

"I hereby certify that the property lines shown on this plan are the lines dividing existing ownerships, and the lines of the streets and ways shown are those of public or private streets already established, and that no new lines for division of existing ownership or for new ways are shown."
Date: 1/12/84
John E. Heavly R.L.S.

41506 A

MAY BE FILED
Date: 3-20-84
By: C.B. FORBUSH
Atlas: Randolph Map 66
Trav: S. C. S. S. S.
Stak'd: Chk Sh. Yes
Prints: Needed 000

DECREE PLAN	
Order	Papers
Traverse	Filed
Map	
Intro	
Approved	

H-1506-A