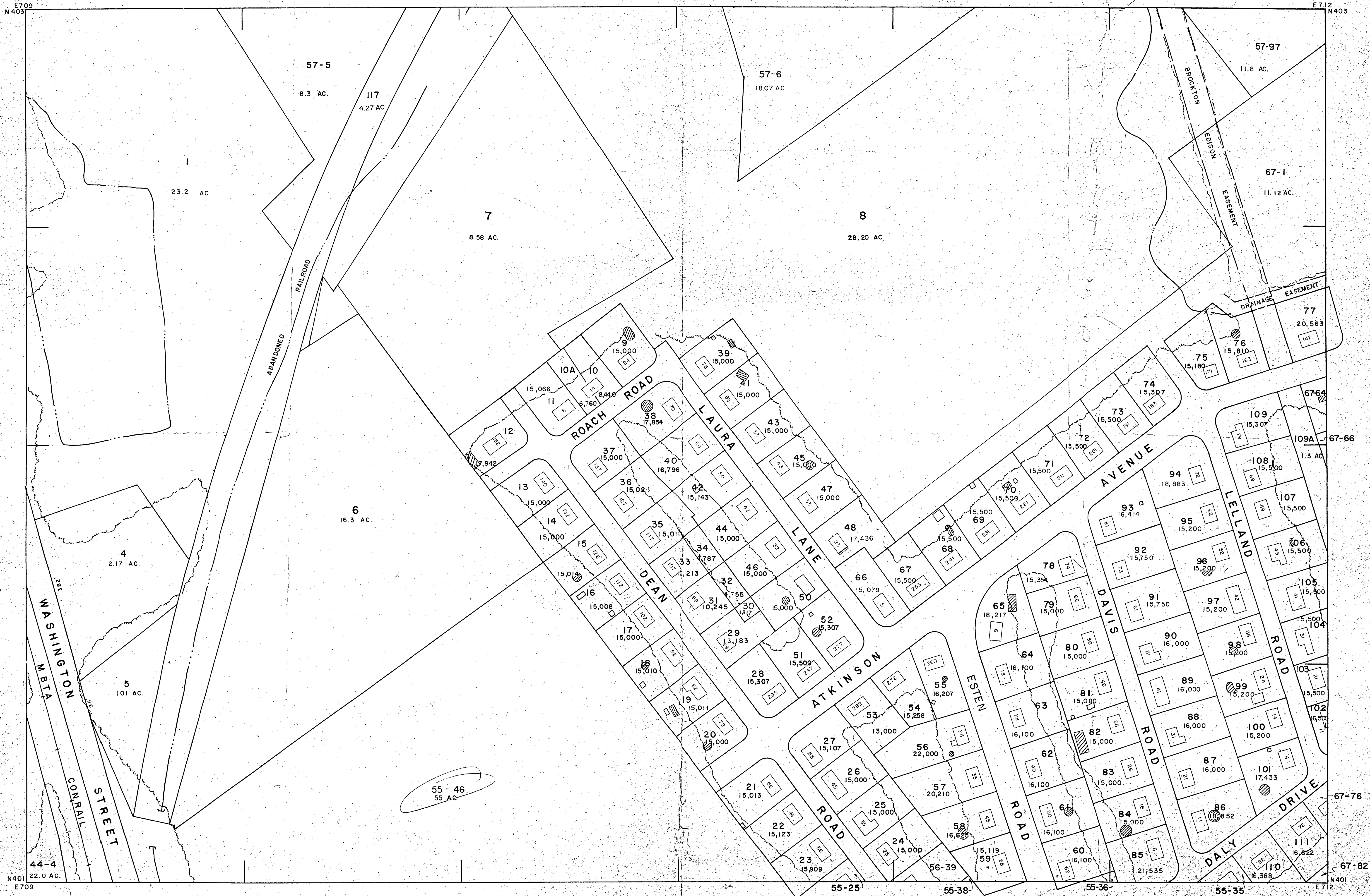


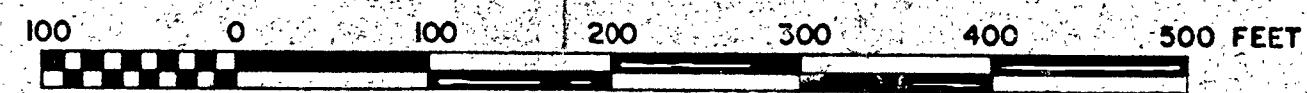
Note - property adjacent to locus
 + part of back title
 per A-Dave

TOWN OF STOUGHTON, MASSACHUSETTS
 OFFICE OF THE BOARD OF ASSESSORS

CASE 41504



PREPARED UNDER THE DIRECTION OF
 THE STOUGHTON BOARD OF ASSESSORS BY
 NEW ENGLAND SURVEY SERVICE INC.
 CIVIL & CONSULTING ENGINEERS
 BOSTON, MASS. OUR NO. 22790



PLAN INFORMATION COMPILED FROM RECORD DATA,
 FOR ASSESSMENT PURPOSES ONLY.

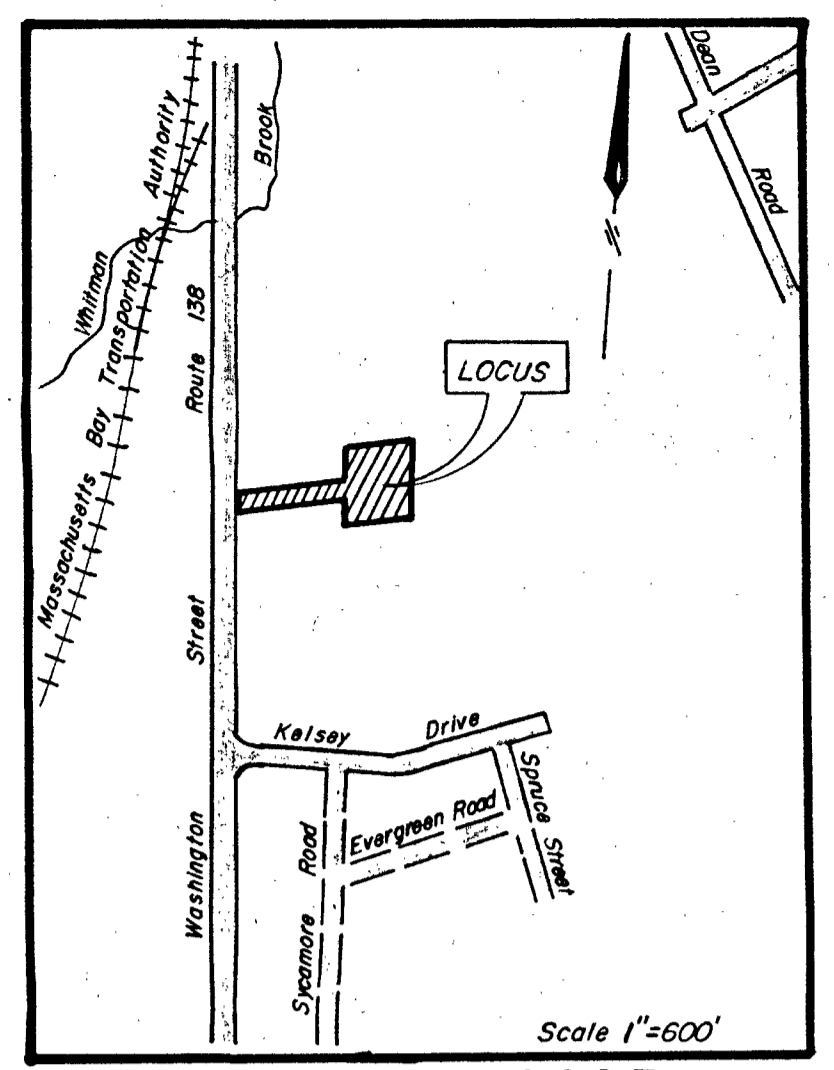
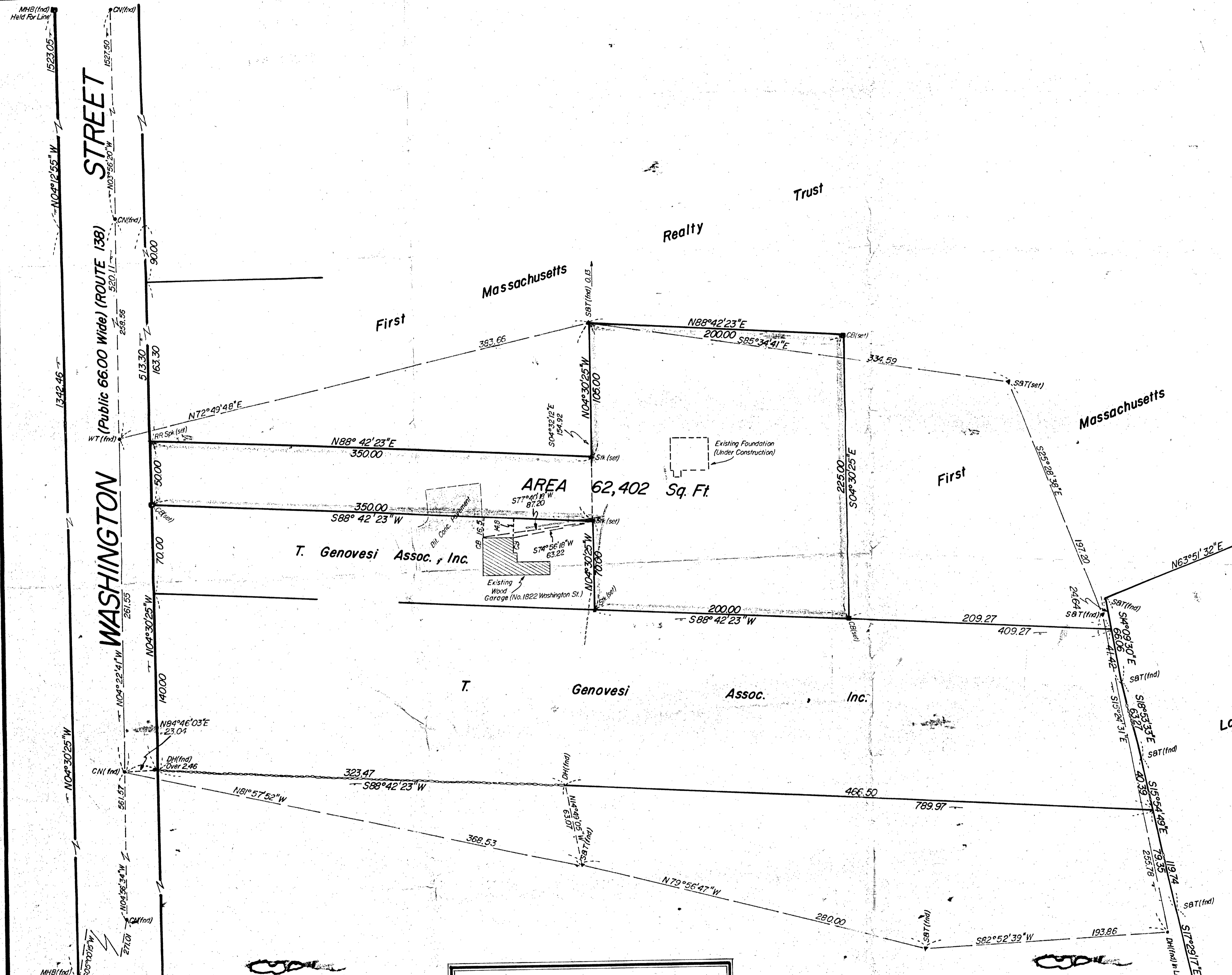
500 FOOT GRID BASED
 ON MASSACHUSETTS COORDINATE SYSTEM MAINLAND ZONE
 THE LAST THREE DIGITS OF THE GRID NUMBERS ARE OMITTED

SHEET NO.

46	57	68
45	56	67
44	55	66

H-41504

LC-1603



—LOCUS MAP—

DEED PLAN
Date
Traverse
Drawn
Marked
Reviewed
Approved

Land Court Plan No. 26978, Lot 3
 Note: For Additional Traverse Information
 See Plan By This Office, Dated
 May 18, 1982. (LC 1585)

41504-A
 MAY BE
 FILED
 Date 3-16-84
 GUDWA
 Atty: N. FOLK Co. 1230
 Trw: ✓
 Exp: ✓
 S. G. ✓
 2 Prints 684.00

LAND COURT
 PLAN OF LAND
 IN
 STOUGHTON, MASSACHUSETTS
 OWNED BY

Continental Cablevision of Southern Massachusetts, Inc.

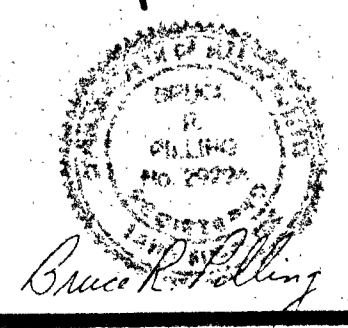
SCALE 1" = 40' DECEMBER 19, 1983

HAYWARD-BOYNTON & WILLIAMS, INC.
 SURVEYORS CIVIL ENGINEERS
 140 SCHOOL ST. BROCKTON, MASS.

I certify that this actual survey was made on the ground in accordance with the Land Court Instructions of 1971 on or between November 1, 1983 and December 19, 1983.
 Date 12-19-83
 Bruce R. Pilling
 Registered Land Surveyor

"I hereby certify that this plan shows the property lines that are the lines of existing ownerships and the lines of streets and ways shown are those of public or private streets or ways already established, and that no new lines for divisions of existing ownership or for new ways are shown."
 12-19-83
 Bruce R. Pilling
 Date Registered Land Surveyor

Note: Deed Reference - Book 6288, Page 262.
 Plan Reference - Book 306/908 of 1983.



LC-1603

H1504-A