

APPROVAL UNDER THE SUBDIVISION
CONTROL LAW NOT REQUIRED

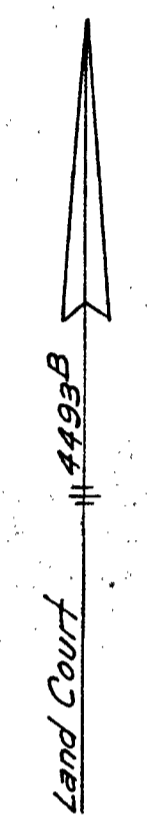
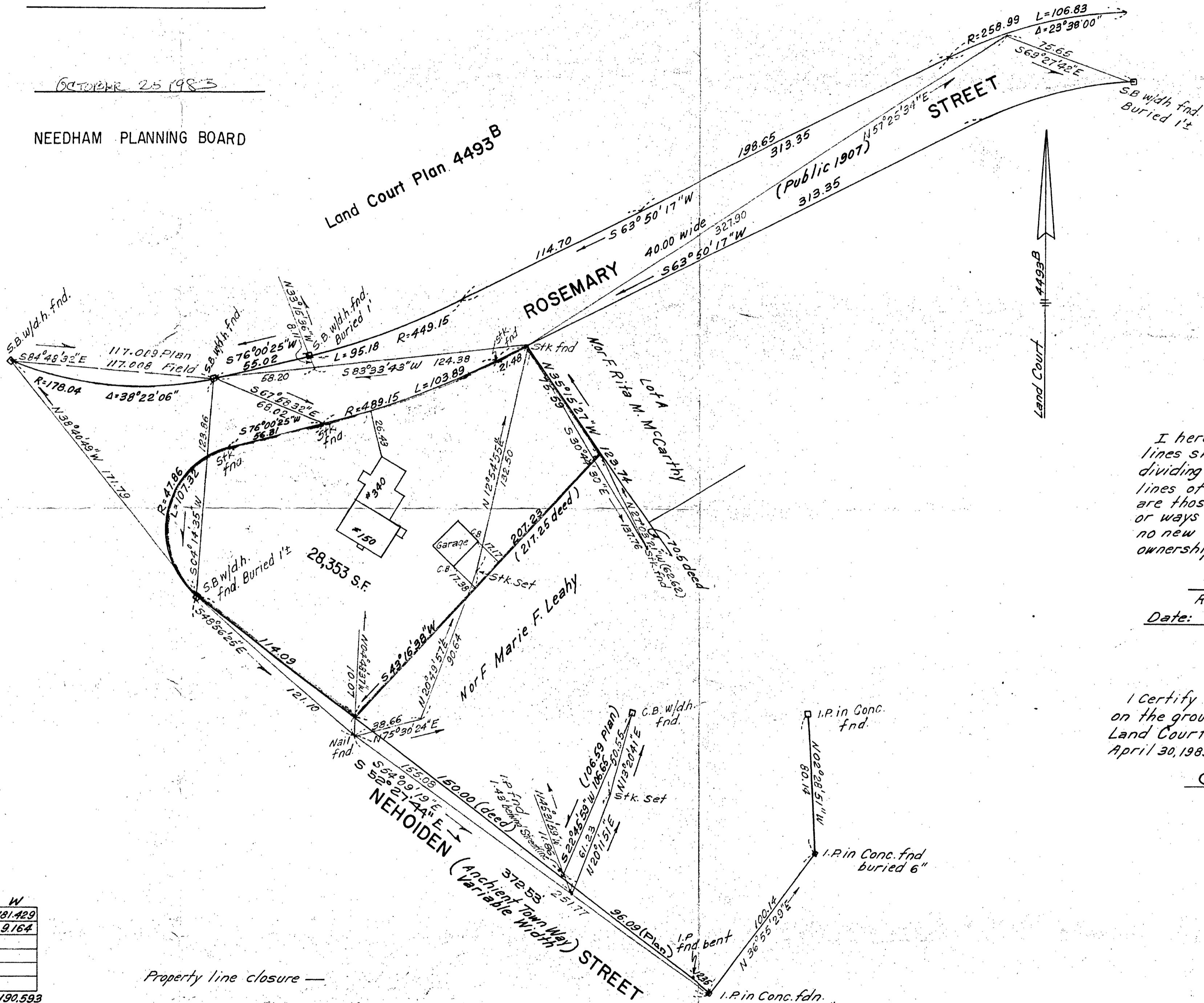
Stanley J. Farrell
Susan M. Mayer
William J. Jones
John H. Cogswell

APPROVED

OCTOBER 25 1983

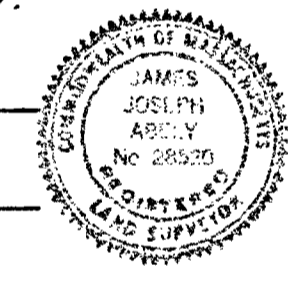
NEEDHAM PLANNING BOARD

Land Court Plan 4493 B



I hereby certify that the property lines shown on this plan are the lines dividing existing ownerships and the lines of the streets and ways shown are those of public or private streets or ways already established, and that no new lines for division of existing ownership or for new ways are shown.

James J. Abely
Registered Land Surveyor
Date: September 12, 1983



I certify that this actual survey was made on the ground in accordance with the Land Court Instructions of 1971 between April 30, 1983 & August 20, 1983

James J. Abely
1082 Highland Avenue
Needham, Mass.

Traverse Closure

	N	S	E	W
S 83° 33' 43" W	182.58	20.473		181.429
S 04° 14' 35" W	123.86	123.521		9.164
S 48° 56' 25" E	121.10	79.544	91.313	
N 75° 30' 24" E	38.66	9.675		37.430
N 20° 49' 57" E	30.64	94.714		32.235
N 12° 54' 55" E	132.50	129.148		29.615
	223.537	223.538	190.593	190.593

Property line closure —

	N	S	E	W
S 76° 00' 25" W	56.31		13.612	54.639
S 19° 59' 35" E	47.86		46.440	11.573
S 37° 32' 16" W	47.86		37.951	29.160
S 52° 27' 44" E	114.09		69.573	90.468
N 43° 16' 38" E	207.23	150.873		182.062
N 35° 15' 27" W	75.59	61.724		49.635
S 63° 50' 17" W	21.48		9.471	19.279
N 26° 09' 43" W	489.15	439.037		215.671
S 13° 59' 55" E	489.15		474.639	118.279
	651.634	651.626	362.382	362.384

PLAN OF LAND
IN
NEEDHAM

SCALE 40 FEET TO AN INCH
JAMES J. ABELY, SURVEYOR
1082 HIGHLAND AVENUE
NEEDHAM, MASS. 02194
AUGUST 24, 1983
Revised 10/22/1983