

41408A

FILED

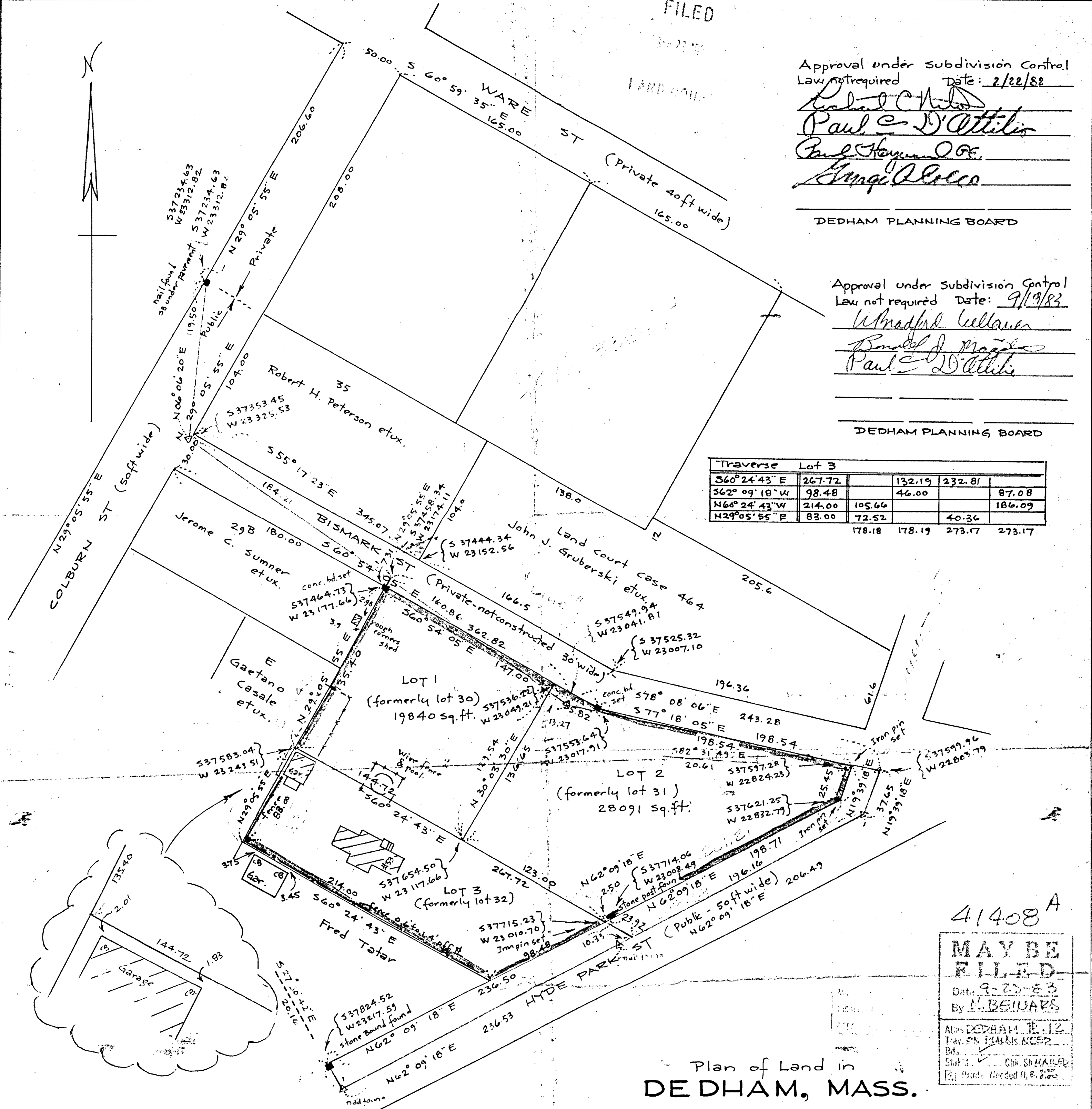
Approval under subdivision Control  
 Law not required Date: 2/22/82  
*Robert Chiles*  
*Paul D. Ottillio*  
*Paul Hayward Jr.*  
*Angelo Polco*

DEDHAM PLANNING BOARD

Approval under subdivision Control  
 Law not required Date: 9/19/83  
*Wladyslaw Kellauer*  
*Ronald J. Magala*  
*Paul D. Ottillio*

DEDHAM PLANNING BOARD

Traverse Lot 3					
S60°24'43"E	267.72	132.19	232.81		
S62°09'18"W	98.48	46.00			87.08
N66°24'43"W	214.00	105.66			186.09
N29°05'55"E	83.00	72.52	40.36		
		178.18	178.19	273.17	273.17



41408A

**MAY BE FILED**  
 Date: 9-22-83  
 By: M. BEJAR  
 ALIAS DEDHAM, MASS.  
 TRAV. EN. PLANNING BOARD  
 STAMP:  ON SHAWLED  
 (R) Prints Rec'd ALB. 225

Plan of Land in  
**DE DHAM, MASS.**

Scale: 1 inch = 50 feet  
 Pilling Engineering Company Inc.  
 26 Norfolk St. Dedham, Mass.  
 February 4, 1982  
 Amended July 22, 1983

I certify that this plan was made from an actual survey on the ground in accordance with the Land Court Instructions of 1971 on or between November 6, 1981 and February 4, 1982 and July 22, 1983.  
 February 4, 1982  
 July 22, 1983  
*Howard L. Millard*  
 Registered Land Surveyor

Traverse LOT 1					
N29°05'55"E	135.40	118.31	65.85	37464.73	23177.66
S60°54'05"E	147.00	71.49	128.45	37536.22	23049.21
S30°03'30"W	136.65	118.28	68.45	37654.50	23117.66
N68°24'43"W	144.72	71.46	125.85	37583.04	23243.51
	189.77	189.77	194.30	194.30	

Traverse LOT 2					
S60°54'05"E	35.82	17.42	31.30	37553.64	23017.91
S77°18'05"E	198.54	43.64	193.68	37597.28	22824.23
S19°39'18"W	25.45	23.97	8.56	37621.25	22832.79
S62°09'18"W	198.71	92.81	175.70	37714.06	23008.49
S62°09'18"W	2.50	1.17	2.21	37715.23	23010.70
N66°24'43"W	123.00	60.73	106.96	37654.50	23117.66
N30°03'30"E	136.65	118.28	68.45	37536.22	23049.21

Transit Traverse					
S27°50'42"E	20.16	17.83	9.42	37824.52	23217.59
N62°09'18"E	236.53	110.48	209.14	37842.35	23208.17
N62°09'18"E	206.49	96.45	182.58	37731.87	22999.93
N19°39'18"E	37.65	35.46	12.66	37635.42	22816.45
N78°08'06"W	243.28	50.02	238.08	37599.96	22803.79
N55°17'23"W	160.86	91.60	132.23	37549.94	23041.87
N55°17'23"W	184.21	104.89	151.43	37458.34	23174.10
N56°06'20"E	119.50	118.82	12.71	37353.45	23325.53
				37234.63	23312.82



41408A