

THESE TRAVERSE LINES ARE PART OF A CLOSED SURVEY.  
(SEE SUBSKETCH BELOW)

DAVID D. TERWILLIGER, ET UX  
HARRY E. BURGESS, ET UX  
ABRAHAM NATERMAN  
ROBERT E. GOLDEN, ET UX  
JEANNETTE S. SIMON  
EDWARD K. GREEN, ET UX  
WILLIAM KAPLAN, ET UX  
SARAH L. FINIGAN

I CERTIFY THAT THIS ACTUAL SURVEY WAS MADE  
ON THE GROUND IN ACCORDANCE WITH THE  
LAND COURT INSTRUCTIONS OF 1971, ON OR  
BETWEEN JANUARY 12, 1983 AND MARCH 25, 1983.

DATE: APRIL 1, 1983 *John R. Anderson, PLS*

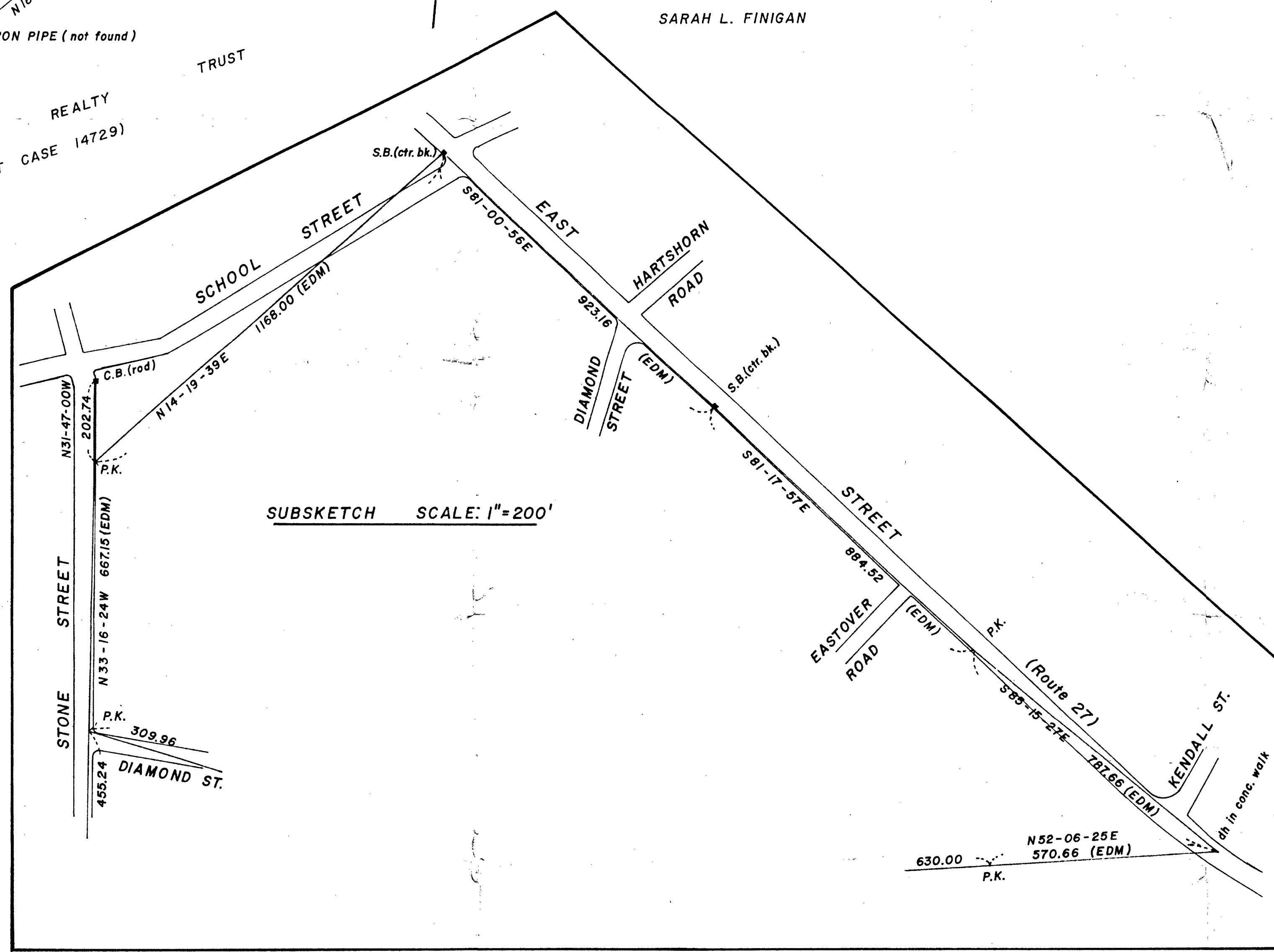


NOTES-  
1. LOT 1 COMPRISES LOTS 8 & 9  
ON A PLAN BY NORWOOD ENGINEERING  
DATED DEC. 16, 1982.  
LOTS 2 & 3 CORRESPOND TO LOTS  
5 & 6 ON THE SAME PLAN.

APPROVAL UNDER SUBDIVISION  
CONTROL LAW NOT REQUIRED -  
DATE: *April 1, 1983*

*William J. Fisher*  
*Lynda J. DeBart*

PLANNING BOARD - WALPOLE



SUBSKETCH SCALE: 1" = 200'

CONFIRMATION  
PLAN OF LAND  
IN  
WALPOLE, MASS.  
SCALE: 1" = 80' APRIL 1, 1983  
JOHN R. ANDERSON & ASSOCIATES  
17 GINLEY ROAD  
WALPOLE, MASS.