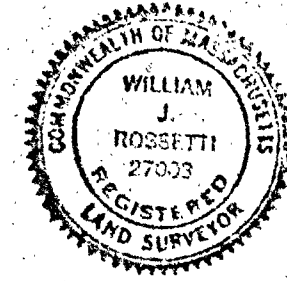


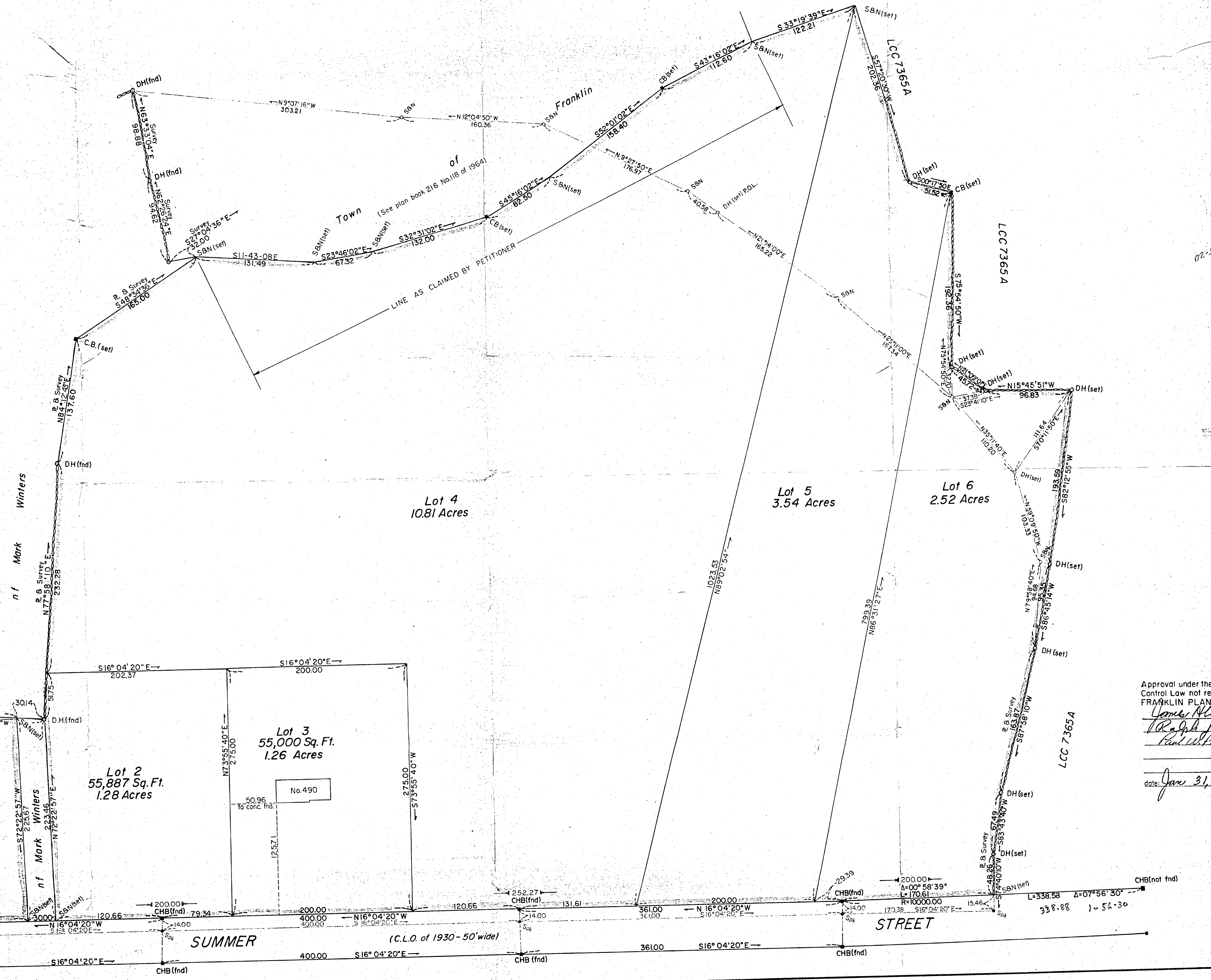
PLAN OF LAND IN FRANKLIN, MASS.

SCALE 1" = 50' DECEMBER 4, 1982
William J. Rossetti R.L.S. 585 Union St Franklin, Mass.



I certify that this survey was made on the ground in accordance with the Land Court instructions of 1971 during November & December 1982.

William J. Rossetti
Registered Land Surveyor



Approval under the Subdivision Control Law not required.
FRANKLIN PLANNING BOARD
James Allash
Ralph J. Pinto
Paul W. Paul

date: Jan 31, 1983