

CHESTNUT ST.

(40.00 WIDE - PRIVATE - UNDEVELOPED)

3.15 S21°-52'-30"E REC.
3.94 S24°-39'-35"E CALC.
1.201 M

ROBERT A. DEMPSEY

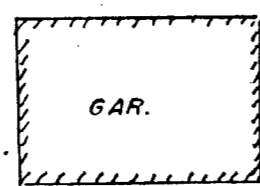
HOWARD

ROBERT A. DEMPSEY

21,531 S.F.

STREET

N69°-20'-50"E
144.43
44.022 M
N77°-09'-50"E
163.03
6' HIGH C.L.F.
N20°-30'-20"W
11.48
3.499 M
D.H. C.B. fnd.



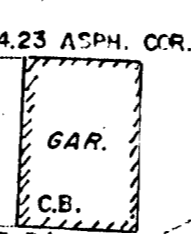
D.H. C.B. fnd.

N20°-21'-20"W
114.94
N20°-21'-20"W
114.90
PLAN
CALC.

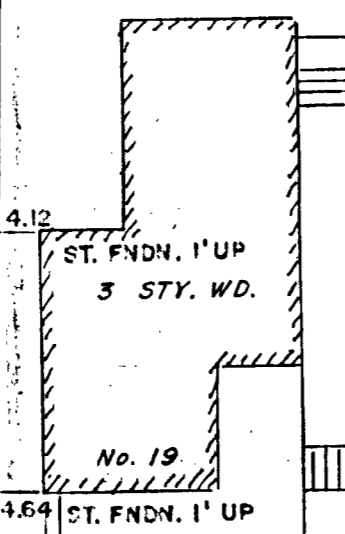
D.H. C.B. fnd.

ROBERT S. CONLEY, JR., TRUSTEE

N69°-44'-40"E
141.35
43.084 M
N64°-34'-23"E
116.18
D.H. C.B. fnd.



AMELIA T. CARRALL et al



x-cut R.R. SPK. set

HUB set

23.500 M
77.10
N21°-38'-05"W
77.10

214.39

N21°-38'-05"W

MYRTLE

(40.00 WIDE - PUBLIC)

STREET

I.P. fnd.

STREET

FULTON

APPROVAL UNDER THE SUBDIVISION CONTROL LAW NOT REQUIRED.

NORWOOD PLANNING BOARD

DATE: _____

I CERTIFY THAT THIS ACTUAL SURVEY WAS MADE ON THE GROUND IN ACCORDANCE WITH THE LAND COURT INSTRUCTIONS OF 1971 BETWEEN AUG. 6, 1982 AND AUG. 9, 1982.



Aug. 13, 1982

PLAN OF LAND NORWOOD, MASS.

SCALE: 1" = 20' AUG. 13, 1982

SHARON SURVEY SERVICE 11 HAMPSHIRE AVE. SHARON, MASS.