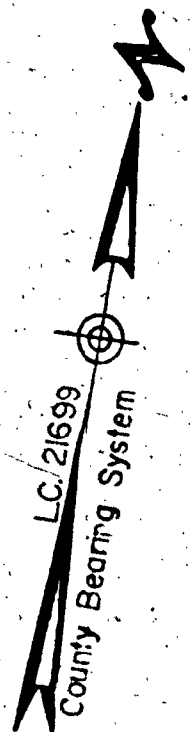


NORTH MAIN STREET (PUBLIC)



TILTON ST.

(PUBLIC-COUNTY L.O. - 40' Width)
NOV. 12, 1947

N 9°-04'-15" W

L.C. 21773

BEAL STREET
(PRIVATE - 30' WIDTH)

L.C. 21599

HOLT ST.
(PRIVATE ST. - 30' Width)

RAYMOND J. & MARY M. CHISHOLM

CARL A. RUFF

COREY ST.
(PUBLIC - 30' Width)

JAY H. & ANITA B. WASSERSUG
CERT. 92705

AREA = 15,613 S.F.

CHRISTOS & GEORGIA
ALEXOPOULAS

OLIVER ST.

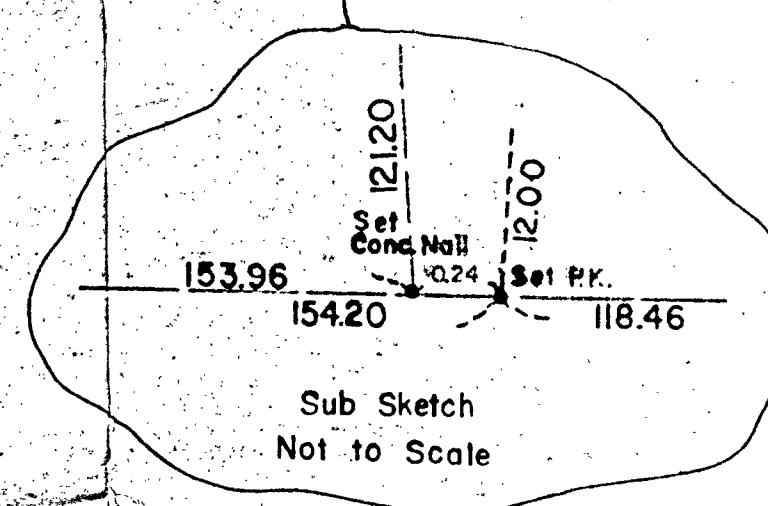
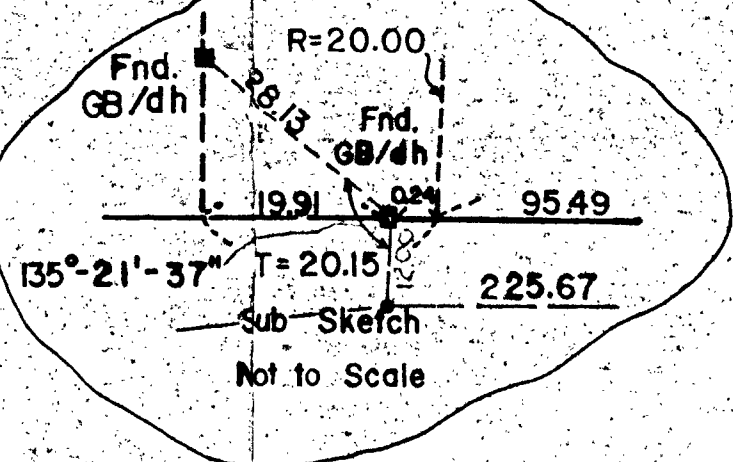
(PUBLIC-COUNTY L.O. - 40' Width)
MARCH 18, 1941

ST.

NO LILLIAN ST.
(PUBLIC - 40' Width)

L.C. 21030

L.C. 23261



NOTE:

I CERTIFY THAT THIS ACTUAL SURVEY WAS MADE ON THE GROUND IN ACCORDANCE WITH LAND COURT INSTRUCTIONS OF 1971 BETWEEN OCT. 14, 1982 AND OCT. 22, 1982.

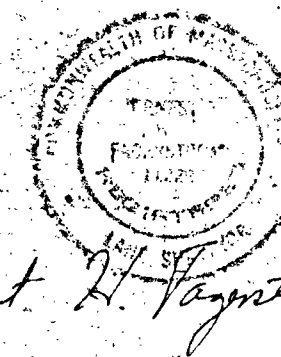
Ernest H. Fagerstrom
138 NORWELL AVE.
NORWELL, MASS.

NOTE:

APPROVAL UNDER SUBDIVISION CONTROL LAW NOT REQUIRED
RANDOLPH PLANNING BOARD

John J. Fisher
James J. Moore
Raymond J. ...
Edward J. ...
11-21-82

RANDOLPH PLANNING BOARD
11/21/82



PLAN OF LAND IN
RANDOLPH, MASS
SCALE 1"=20' · NOV 9, 1982
ERNEST H. FAGERSTROM, SURVEYOR
138 NORWELL AVE., NORWELL, MA.