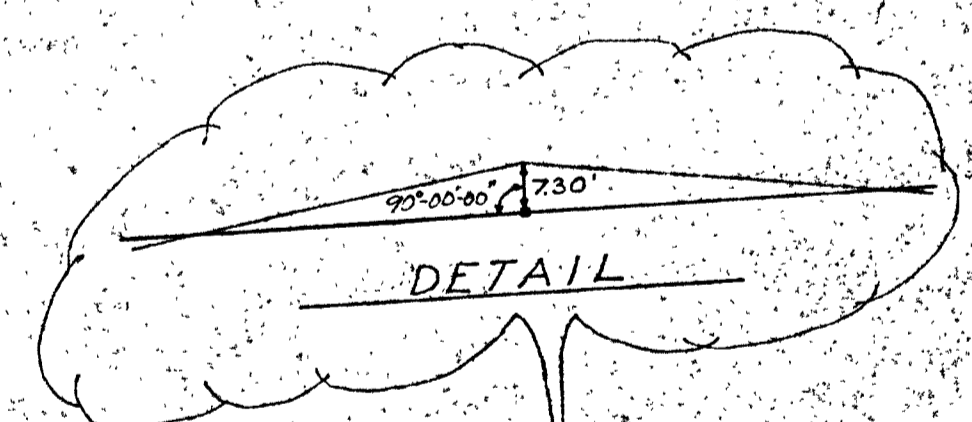
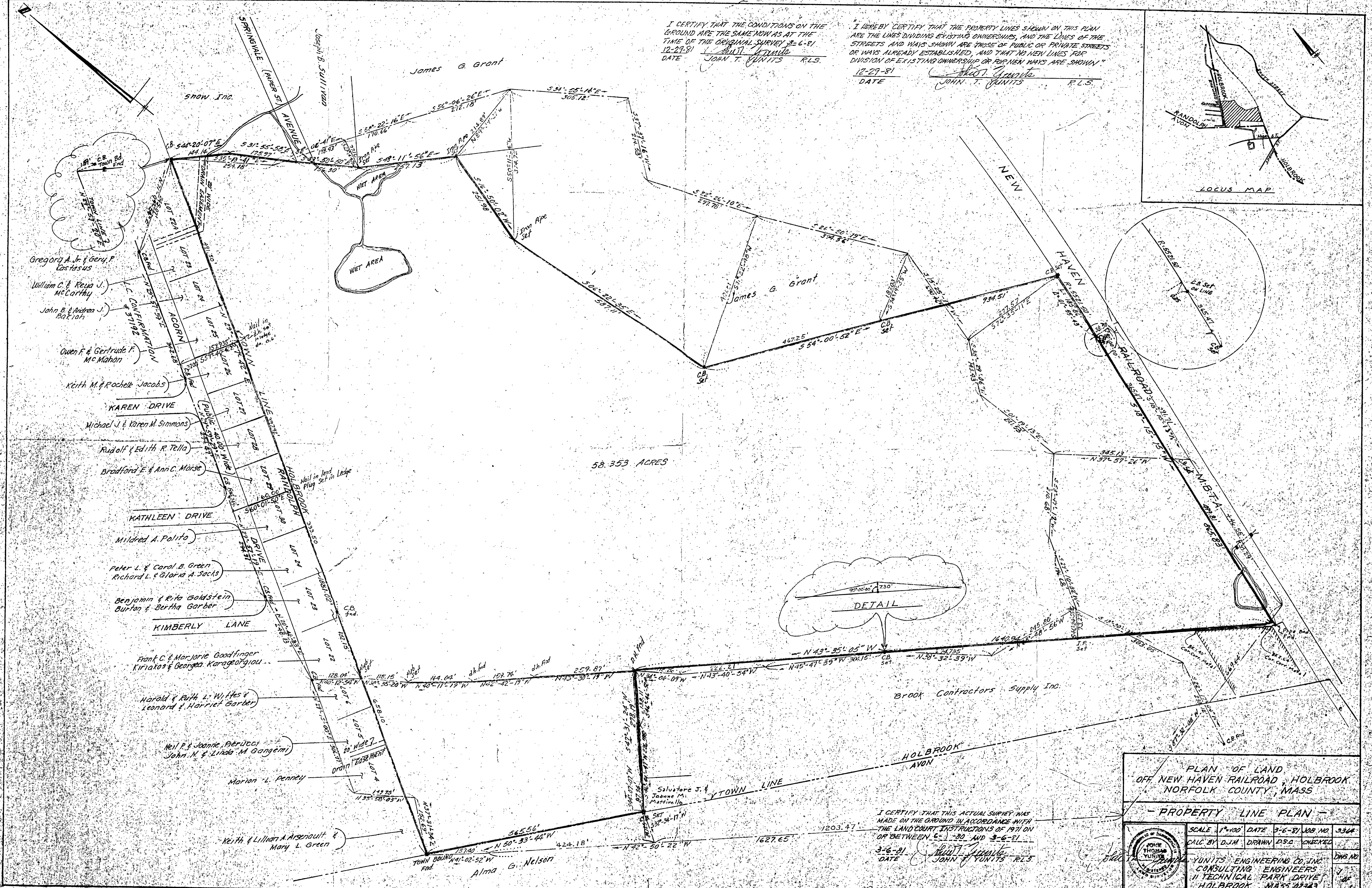
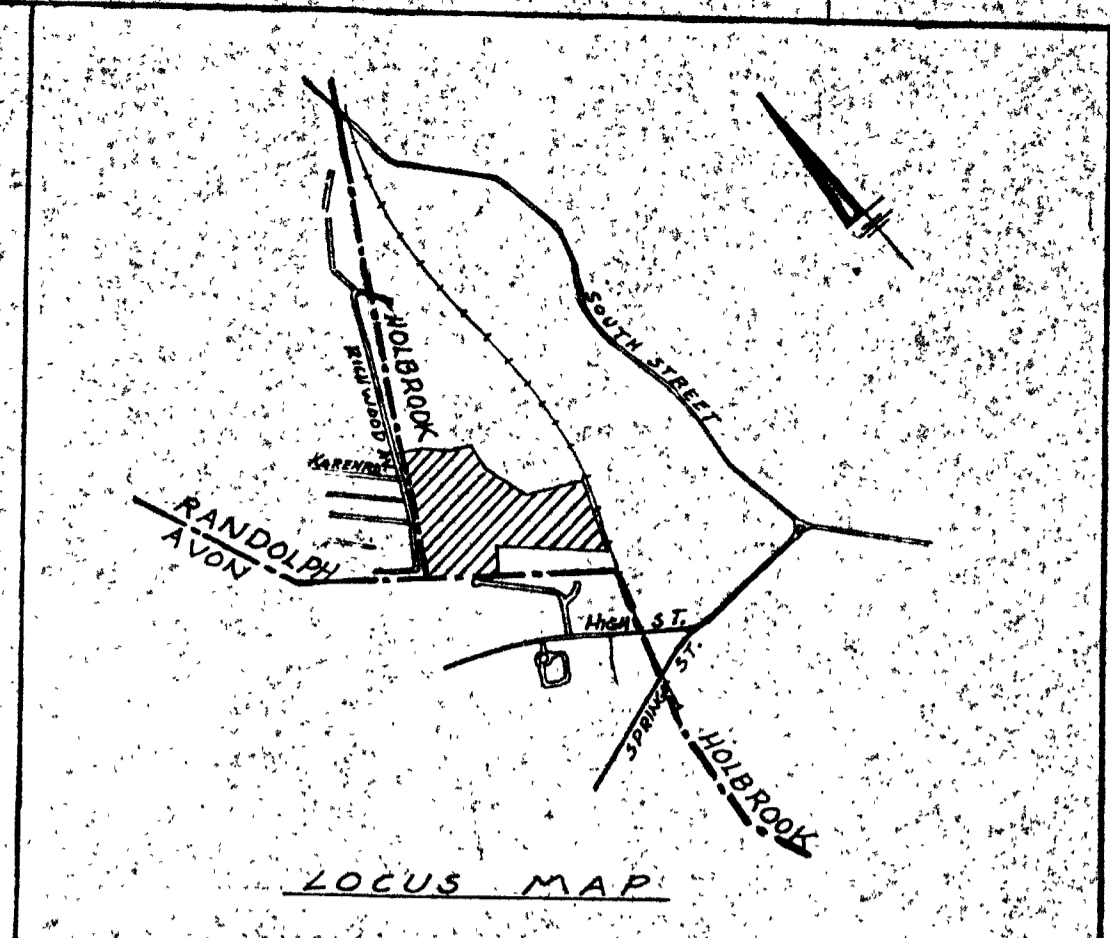


I CERTIFY THAT THE CONDITIONS ON THE GROUND ARE THE SAME NOW AS AT THE TIME OF THE ORIGINAL SURVEY 3-6-81
 DATE 12-29-81
 JOHN T. YUNITS R.L.S.

I HEREBY CERTIFY THAT THE PROPERTY LINES SHOWN ON THIS PLAN ARE THE LINES DIVIDING EXISTING OWNERSHIPS, AND THE LINES OF THE STREETS AND WAYS SHOWN ARE THOSE OF PUBLIC OR PRIVATE STREETS OR WAYS ALREADY ESTABLISHED, AND THAT NO NEW LINES FOR DIVISION OF EXISTING OWNERSHIP OR FOR NEW WAYS ARE SHOWN.
 DATE 12-29-81
 JOHN T. YUNITS R.L.S.



PLAN OF LAND OFF NEW HAVEN RAILROAD, HOLBROOK NORFOLK COUNTY, MASS

PROPERTY LINE PLAN

SCALE	1"=100'	DATE	3-6-81	DWG NO.	3364
CALC BY	DJM	DRAWN BY	DSO	CHECKED	
YUNITS ENGINEERING CO. INC. CONSULTING ENGINEERS 11 TECHNICAL PARK DRIVE HOLBROOK, MASS 01543					DWG NO. 3364

I CERTIFY THAT THIS ACTUAL SURVEY WAS MADE ON THE GROUND IN ACCORDANCE WITH THE LAND COURT INSTRUCTIONS OF 1971 ON OR BETWEEN 6-1-80 AND 3-6-81
 DATE 3-6-81
 JOHN T. YUNITS R.L.S.

