

I CERTIFY THAT THE CONDITIONS ON THE GROUND ARE THE SAME NOW AS AT THE TIME OF THE ORIGINAL SURVEY.

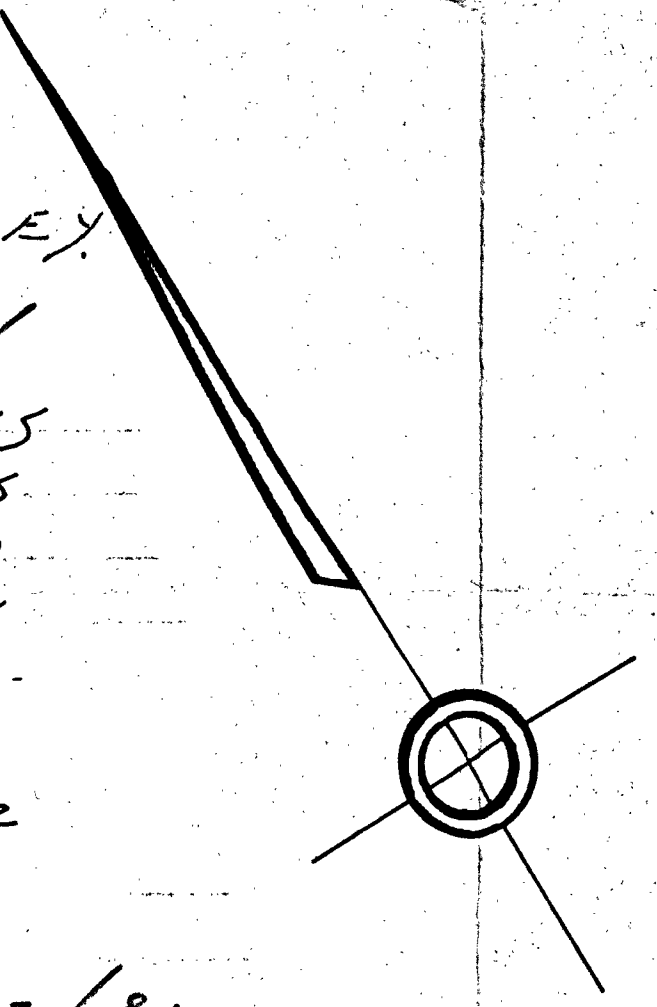
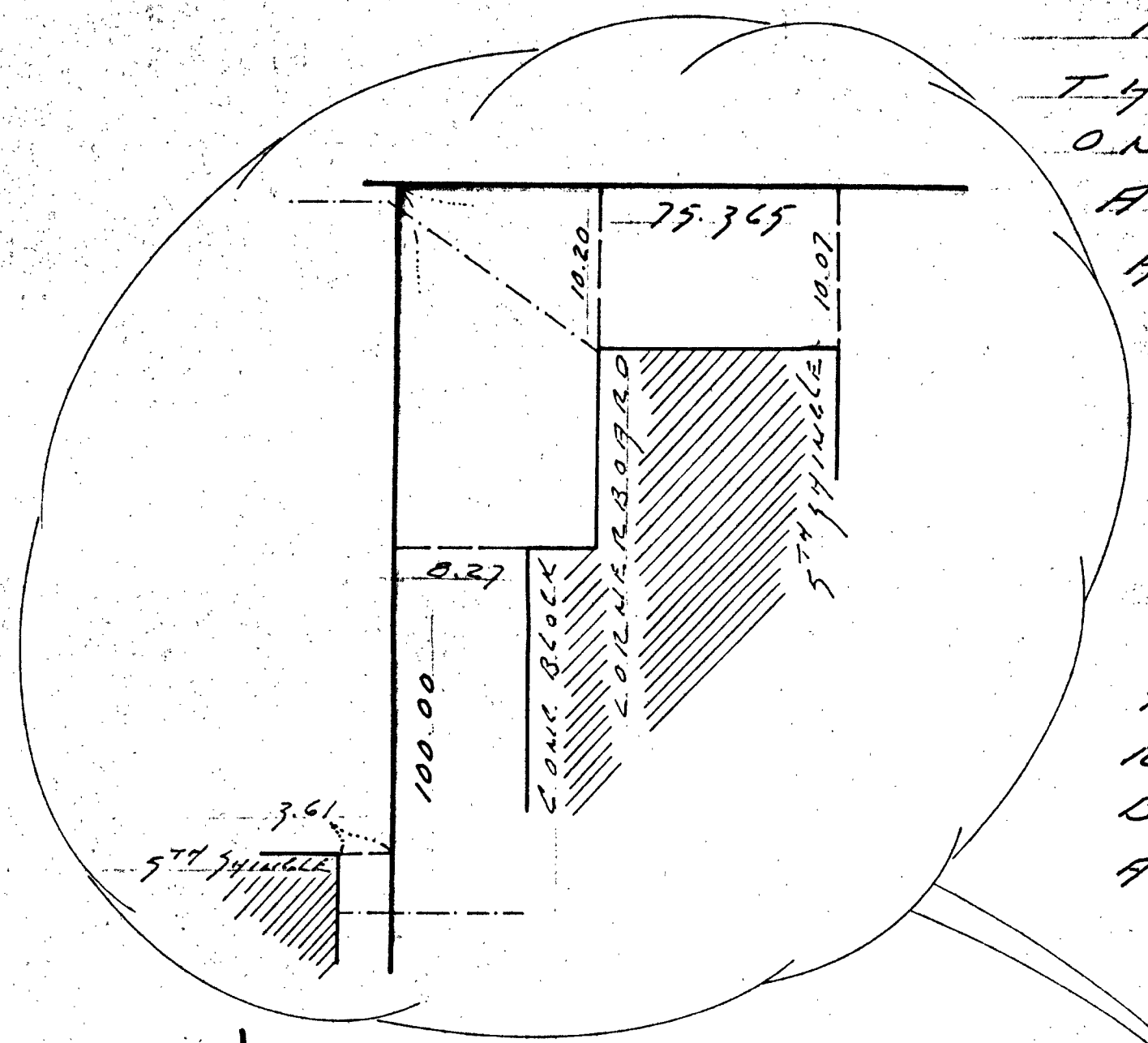
Quinn O. Gately 1/12/81
I CERTIFY THAT THIS ACTUAL SURVEY WAS MADE ON THE GROUND IN ACCORDANCE WITH THE LAND COURT INSTRUCTIONS OF 1971 ON OR BETWEEN DECEMBER 2 AND DECEMBER 17, 1980.

Quinn O. Gately 1/12/81

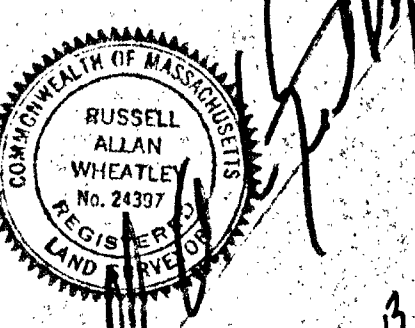
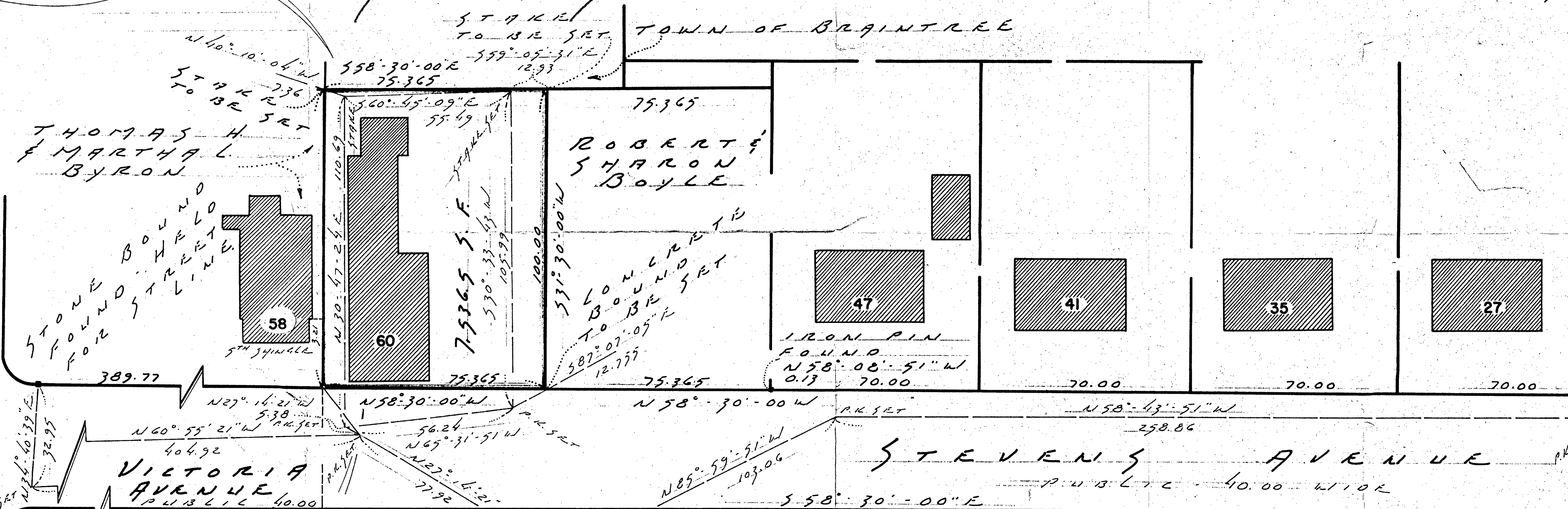
LAND COURT
PLAN OF LAND
IN

BRAINTREE, MASS.
OWNED BY
GEORGE H. GELSER

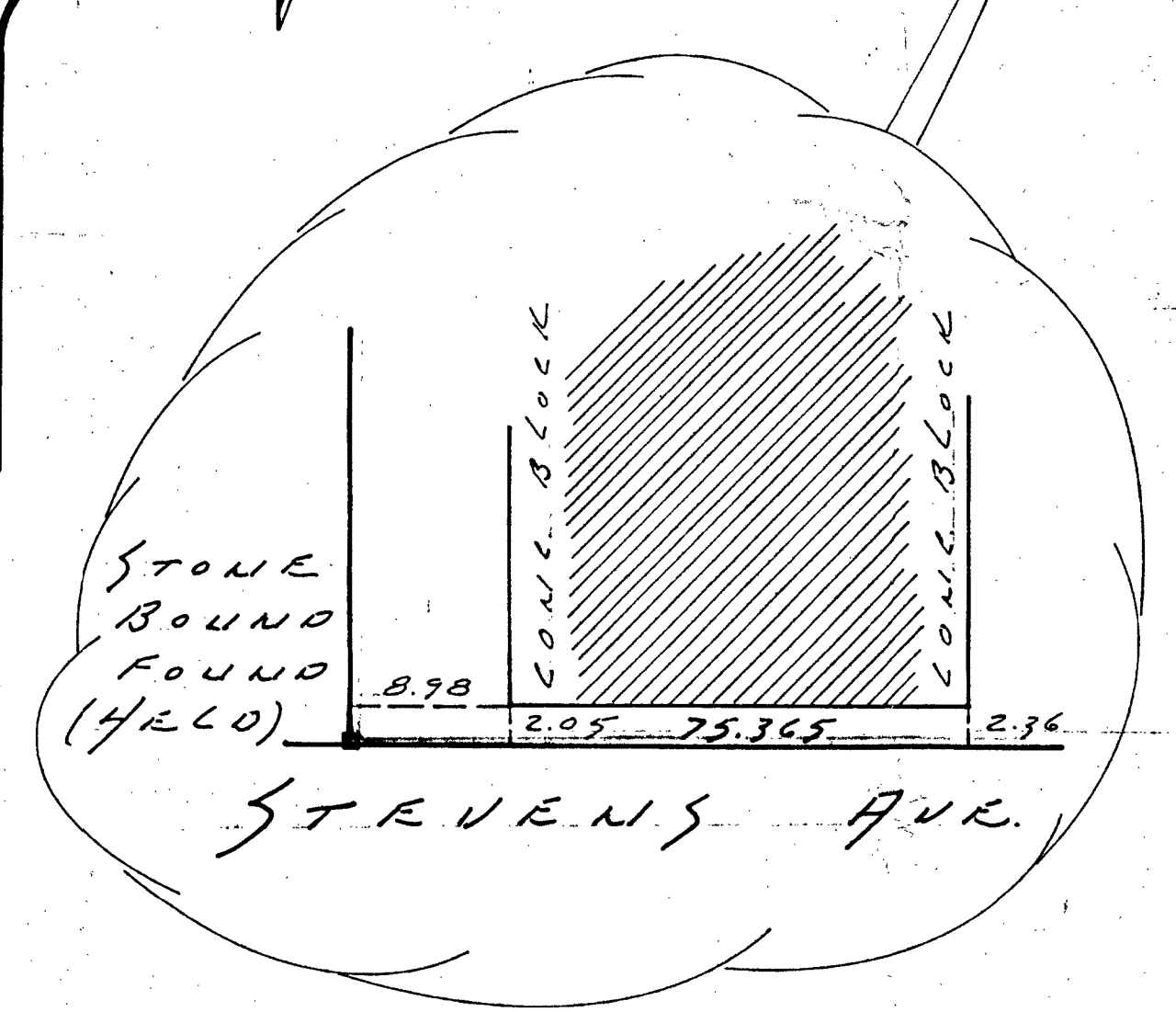
SCALE: 1" = 20'
JANUARY 12, 1981
THE RUSSELL A. WHEATLEY Co. INC.
700 BEDFORD ST. BOSTON, MASS.



FOUNTAIN STREET
PUBLIC 50.00



Quinn O. Gately
CONCRETE BOUND FOUND FROM RECORD 195 FROM RECORD 195 POSITION 588'-49'-51" E 1781
CONCRETE BOUND FOUND FROM RECORD 195 FROM RECORD 195 POSITION 546'-16'-26" W 3322
STONE BOUND FOUND



I CERTIFY THAT THE PROPERTY LINES SHOWN ON THIS PLAN ARE THE LINES DIVIDING EXISTING OWNERSHIPS AND THE LINES OF THE STREETS AND WAYS SHOWN ARE THOSE OF PUBLIC OR PRIVATE STREETS OR WAYS ALREADY ESTABLISHED AND THAT NO NEW LINES FOR DIVISION OF EXISTING OWNERSHIP OR FOR NEW WAYS ARE SHOWN.

Quinn O. Gately 1/12/81

LEBOB ST.
PUBLIC 40.00