

Traverse Lot 1				
N88° 21' 20" W	187.51	5.38		187.43
N05° 50' 56" E	119.47	118.85		12.17
S88° 28' 50" E	86.34		2.29	86.31
S88° 21' 20" E	79.86		2.29	79.83
S04° 21' 35" E	120.00		119.65	9.12
	124.23	124.23	187.43	187.43

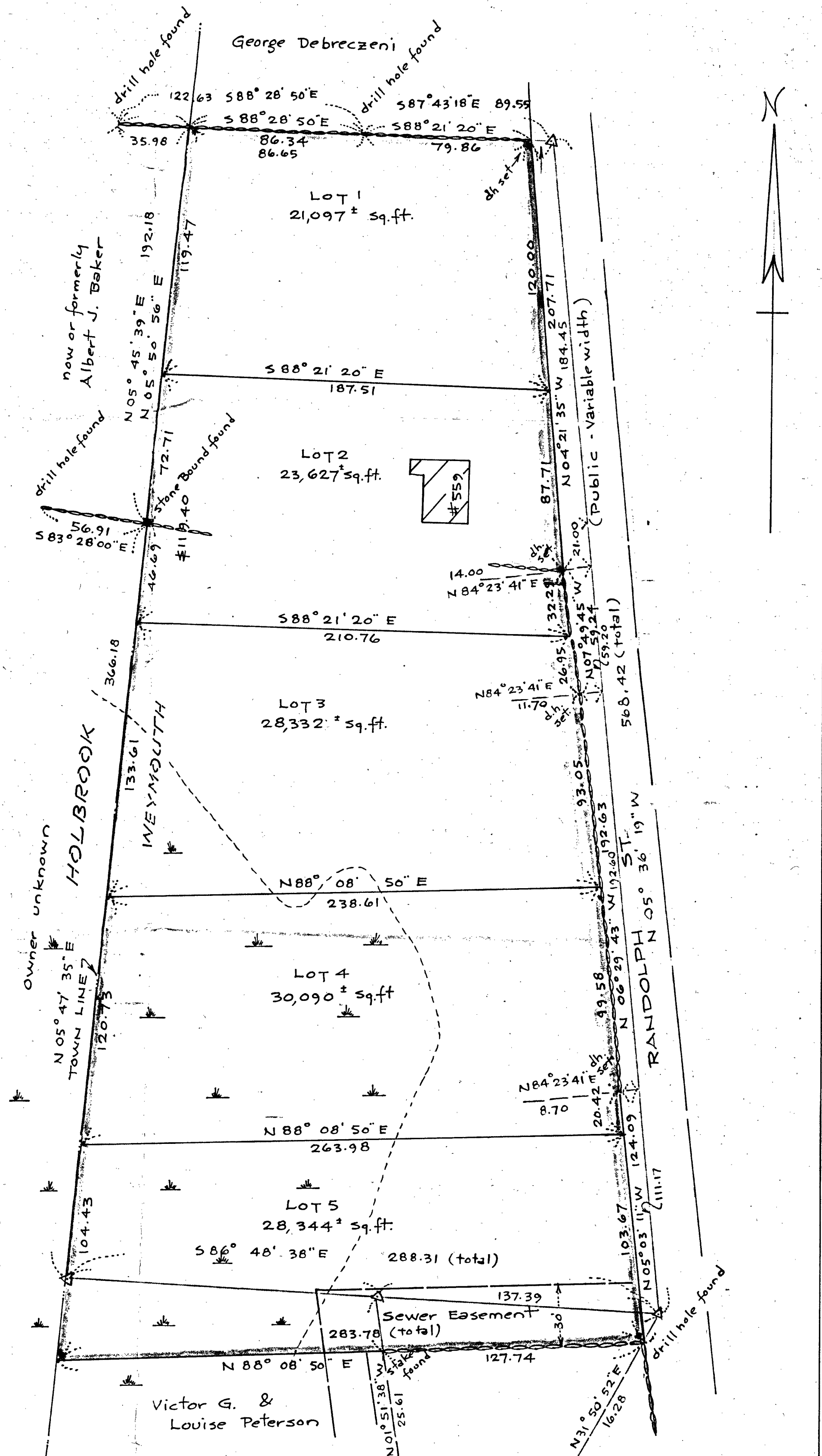
Traverse Lot 2				
N88° 21' 20" W	210.76	6.05		210.67
N05° 50' 56" E	119.40	118.78		12.17
S88° 21' 20" E	187.51		5.38	187.43
S04° 21' 35" E	87.71		87.46	6.67
S07° 49' 45" E	32.29		31.97	4.40
	124.83	124.83	210.67	210.67

Traverse Lot 3				
S88° 21' 20" E	210.76		6.05	210.67
S07° 49' 55" E	26.95		26.70	3.67
S06° 29' 43" E	93.05		92.45	10.53
S88° 08' 50" W	238.61		7.71	238.48
N05° 50' 56" E	133.61	132.91		13.62
	132.91	132.91	238.48	238.48

Traverse Lot 4				
N88° 08' 50" E	238.61	7.71		238.48
S06° 29' 43" E	99.58		98.94	11.26
S05° 03' 11" E	20.42		20.34	1.80
S88° 08' 50" W	263.98		8.53	263.84
N05° 50' 56" E	120.73	120.10		12.30
	127.81	127.81	263.84	263.84

Traverse Lot 5				
N88° 08' 50" E	263.98	8.53		263.84
S05° 03' 11" E	103.67		103.27	9.13
S88° 08' 50" W	283.78		9.18	283.63
N05° 50' 56" E	104.43	103.89		10.64
	112.42	112.45	283.61	283.63

Transit Traverse				
S88° 28' 50" E	86.65		2.30	86.62
S87° 43' 18" E	89.55		3.56	89.48
S05° 36' 19" E	568.42		565.70	55.52
N86° 48' 38" W	288.31	16.04		287.86
N05° 47' 35" E	366.18	364.31		36.96
N05° 45' 39" E	192.18	191.21		19.29
	571.56	571.55	287.87	287.86



Plan of Land in  
**WEYMOUTH, MASS.**

Scale: 1 inch = 40 feet

Pilling Engineering Company Inc.

See Plan 11-1981 Bk 5826 Pg 154  
Norfolk Registry of Deeds

26 Norfolk St. Dedham, Mass.

May 29, 1981

Approval under Subdivision Control  
Law not required Date: \_\_\_\_\_

I certify that this actual survey  
was made on the ground in accordance  
with the Land Court Instructions of 1971  
on or between April 22, 1981 and May 29, 1981

Date: May 29, 1981

*Howard H. Millard*  
Registered Land Surveyor

WEYMOUTH PLANNING BOARD

former Lot 1 Block 614 Sheet 56

