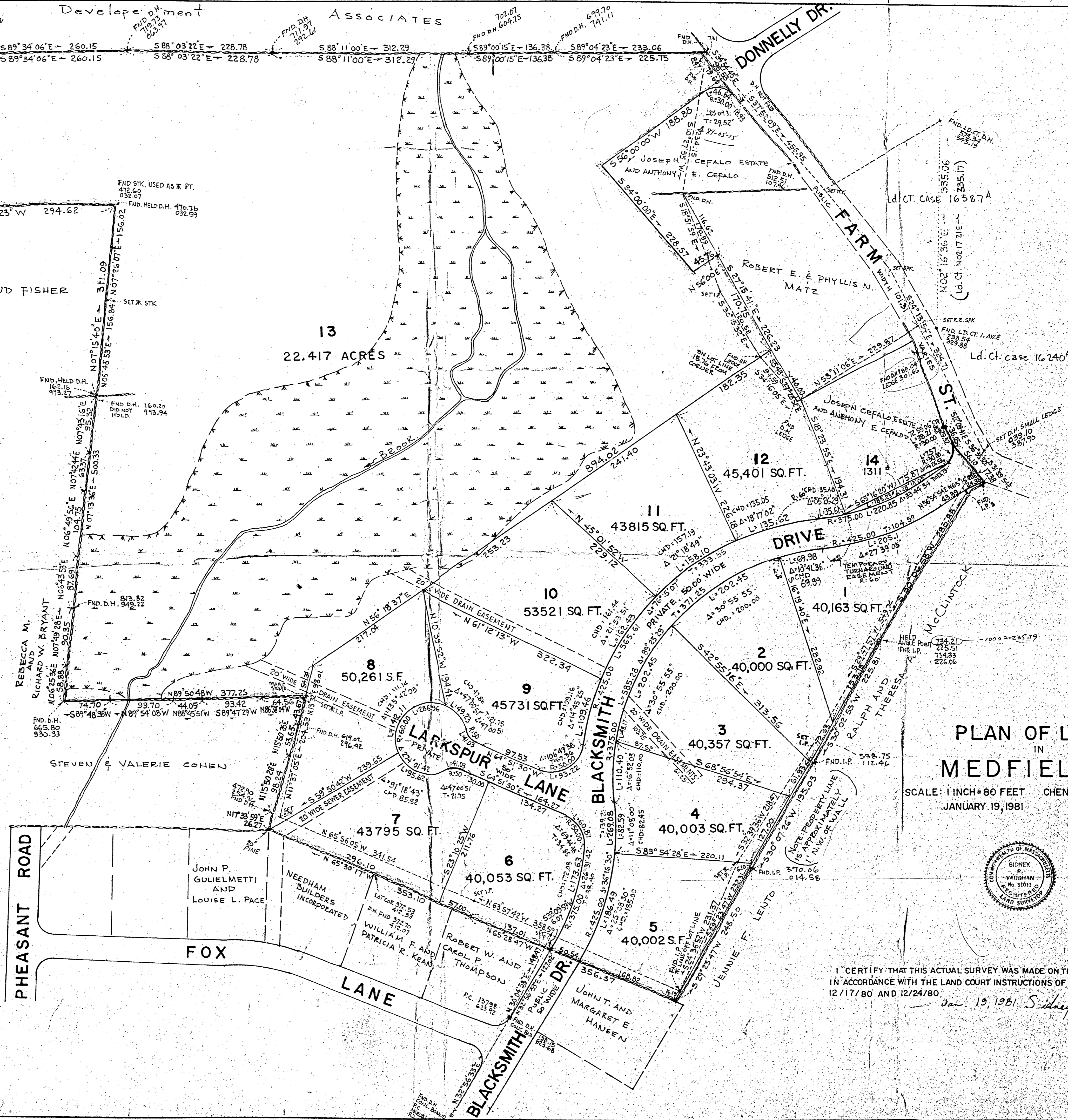


N
Ld. Ct. 30396

APPROVED SUBJECT TO TERMS AND CONDITIONS OF COVENANT FILED AS DOCUMENT 1596 OF 1981; THIS PLAN BEING SUBSTANTIALLY THE SAME AS PLAN FILED IN PLAN BOOK 286; PLAN 36 OF 1981, EXCEPT A MORE PRECISE VERSION BASED ON RECENT SURVEY. LOTS 13 AND 14 ARE NOT TO BE USED AS SEPARATE BUILDING LOTS.
MEDFIELD PLANNING BOARD

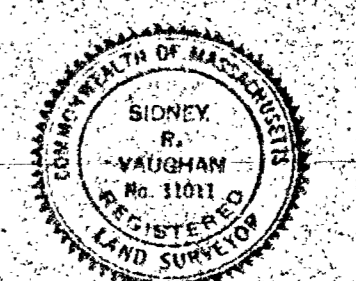
Richard W. Bryant
Robert J. Larkin
Annal V. Larkin

DATE 2/9/81



PLAN OF LAND IN MEDFIELD, MASS.

SCALE: 1 INCH = 80 FEET CHENEY ENGINEERING CO., INC.
JANUARY 19, 1981 NEEDHAM, MASS.



I CERTIFY THAT THIS ACTUAL SURVEY WAS MADE ON THE GROUND IN ACCORDANCE WITH THE LAND COURT INSTRUCTIONS OF 1971 BETWEEN 12/17/80 AND 12/24/80
Jan. 19, 1981 Sidney R. Vaughan