

PLAN OF LAND- HOLBROOK, MASS.


LOT A SOUTH STREET

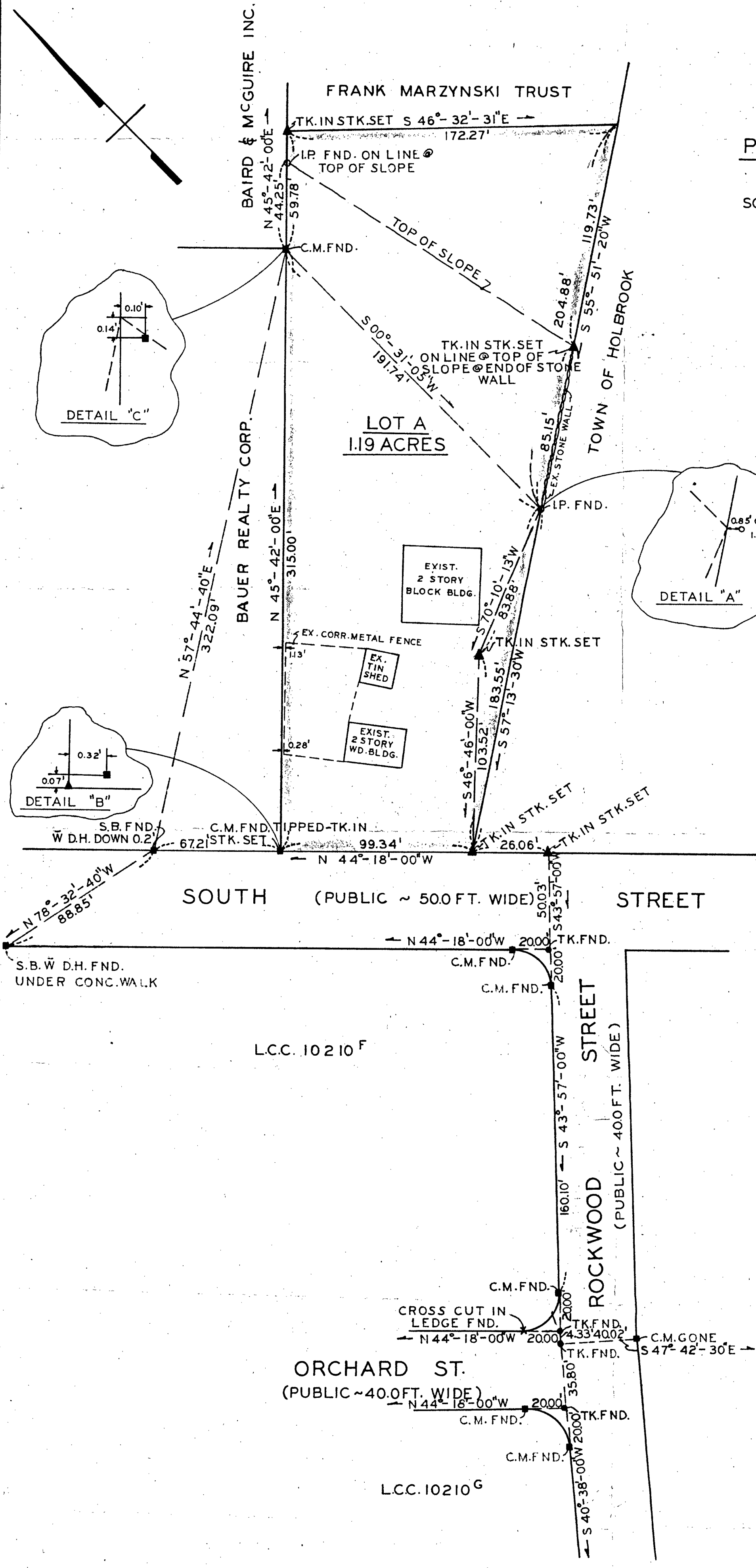
SCALE: 1" = 40'

1980

JOHN E. LEVREULT, P.E.  
& ASSOCIATES  
10 DIAUTO DRIVE  
RANDOLPH, MASS.

I HEREBY CERTIFY THAT THIS ACTUAL  
SURVEY WAS MADE ON THE GROUND ON  
JULY 11, THRU AUG. 27, 1980 IN ACCORDANCE  
WITH LAND COURT INSTRUCTIONS OF 1971.

*John E. Levreault, P.E.* 8-27-80  




APPROVAL NOT REQUIRED UNDER  
THE SUBDIVISION CONTROL LAW  
HOLBROOK PLANNING BOARD:

*William R. Long* CHMN.

*John C. Sarbanis*  
*Stewart M. McKay*

DATE: 9/18/80  
File 609