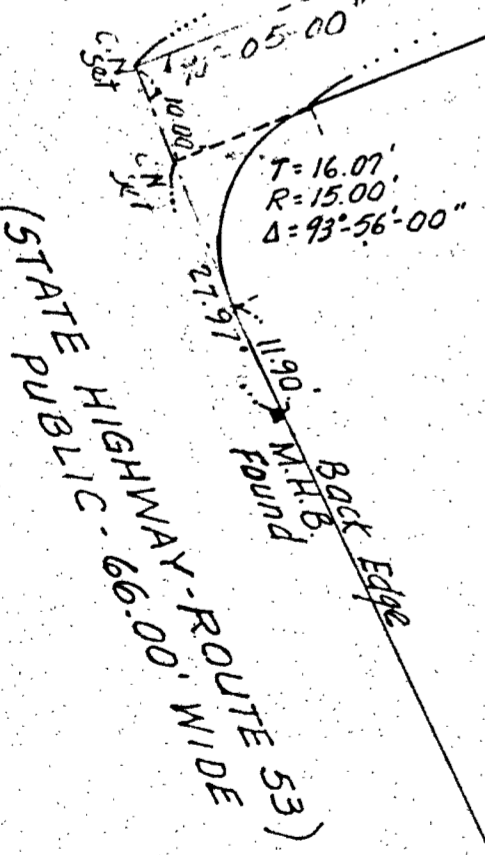




WASHINGTON STREET  
 (STATE PUBLIC HIGHWAY - ROUTE 53)  
 66.00' WIDE

SEAVER ROAD  
 (PUBLIC - 40.00' WIDE)

WHITMANS POND



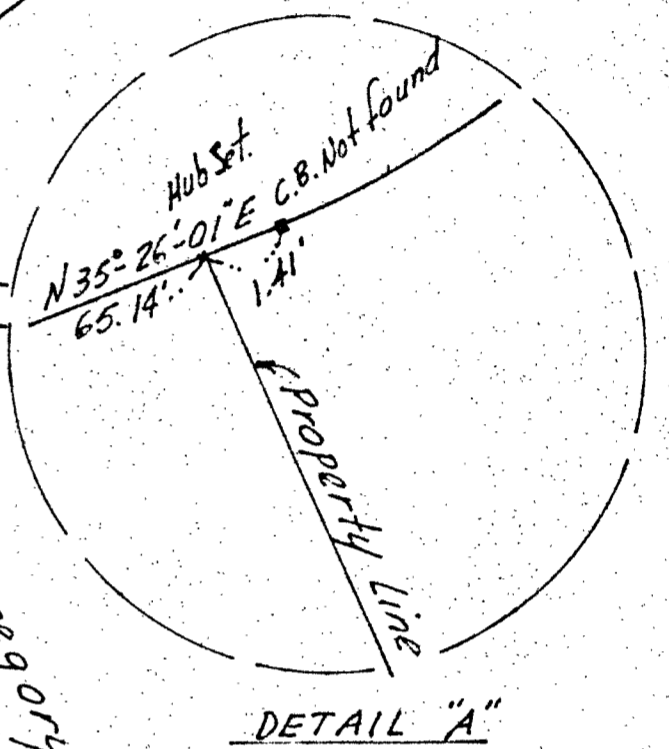
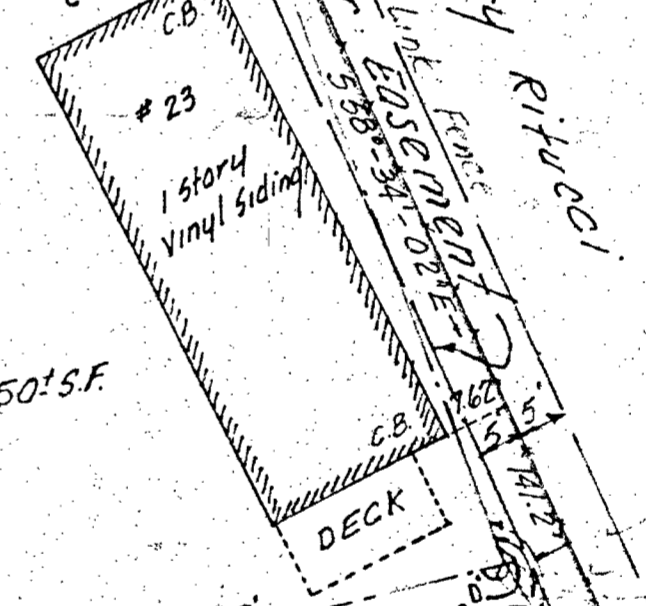
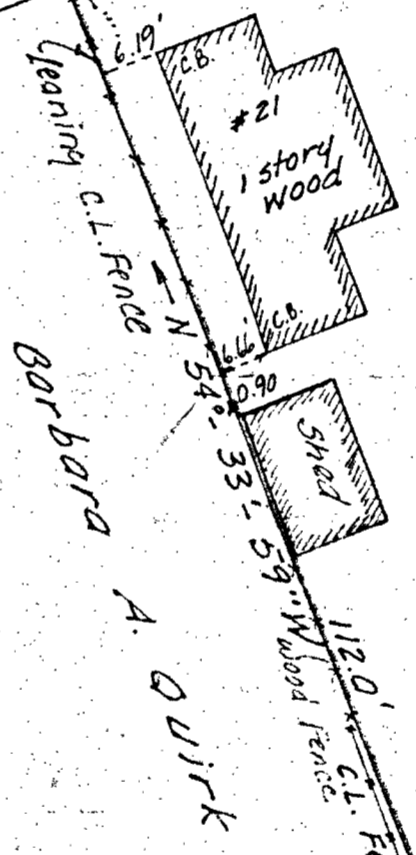
N 35°-26'-01" E 287.72'  
 E 10.00' OFFSET LINE 303.80'  
 N 35°-26'-01" E

APPROVAL UNDER SUBDIVISION CONTROL - LAW NOT REQUIRED  
 WEYMOUTH PLANNING BOARD  
*William J. Begley*  
 Clerk

3/31/80  
 DATE

I CERTIFY THAT THE CONDITIONS ON THE GROUND ARE THE SAME NOW AS AT THE TIME OF THE ORIGINAL SURVEY 12-12-79  
 1-20-81 DATE *John T. Yunits* R.L.S.

I CERTIFY THAT THIS ACTUAL SURVEY WAS MADE ON THE GROUND IN ACCORDANCE WITH THE LAND COURT INSTRUCTIONS OF 1971 ON OR BETWEEN NOV. 30, 1979 AND DEC. 4, 1979  
 12-12-79 DATE  
*John T. Yunits* R.L.S.



PLAN OF LAND  
 SEAVER ROAD, WEYMOUTH  
 NORFOLK COUNTY, MASS.

- PROPERTY LINE PLAN -

	SCALE 1"=20'	DATE 12-12-79	JOB NO. 10178
	CALC BY	DRAWN G.K.H.	CHECKED
YUNITS ENGINEERING CO., INC. CONSULTING ENGINEERS 11 TECHNICAL PARK DRIVE HOLBROOK, MASS. 02343.			DWG NO. 1