

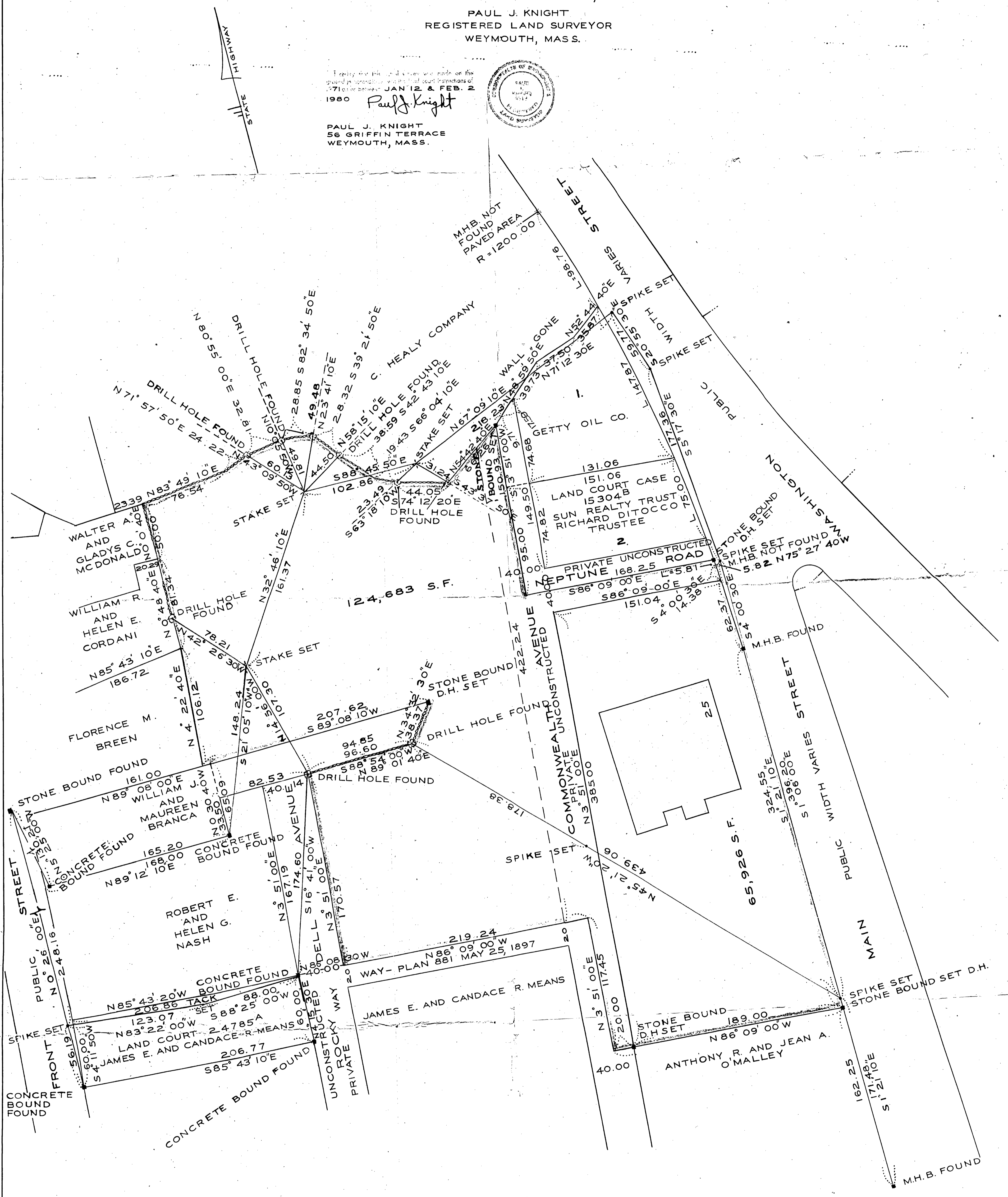
PLAN OF LAND IN
WEYMOUTH
 NORFOLK COUNTY, MASS.
 SCALE: 1" = 40' FEBRUARY 15, 1980

PAUL J. KNIGHT
 REGISTERED LAND SURVEYOR
 WEYMOUTH, MASS.

Field notes for this survey were made on the ground in accordance with the instructions of the Board of Registration of Professional Surveyors of the State of Massachusetts on JAN 12 & FEB. 2 1980
Paul J. Knight



PAUL J. KNIGHT
 56 GRIFFIN TERRACE
 WEYMOUTH, MASS.



LOT 17, 24, & 41 BLOCK 327 SHEETS 24, 25, 28, 29
 PART OF THIS PLAN WAS FORMERLY 32.952^A DISMISSED