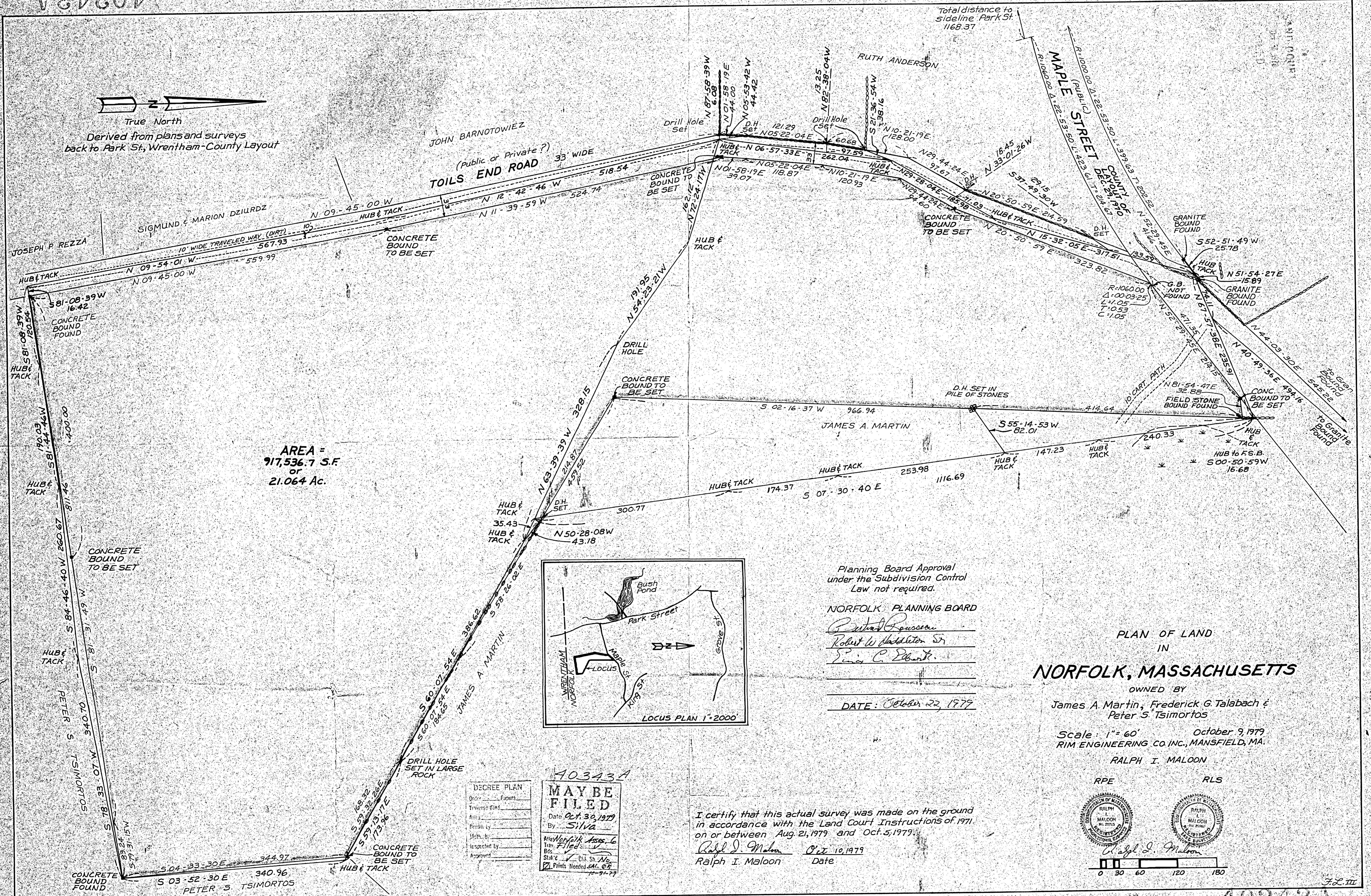
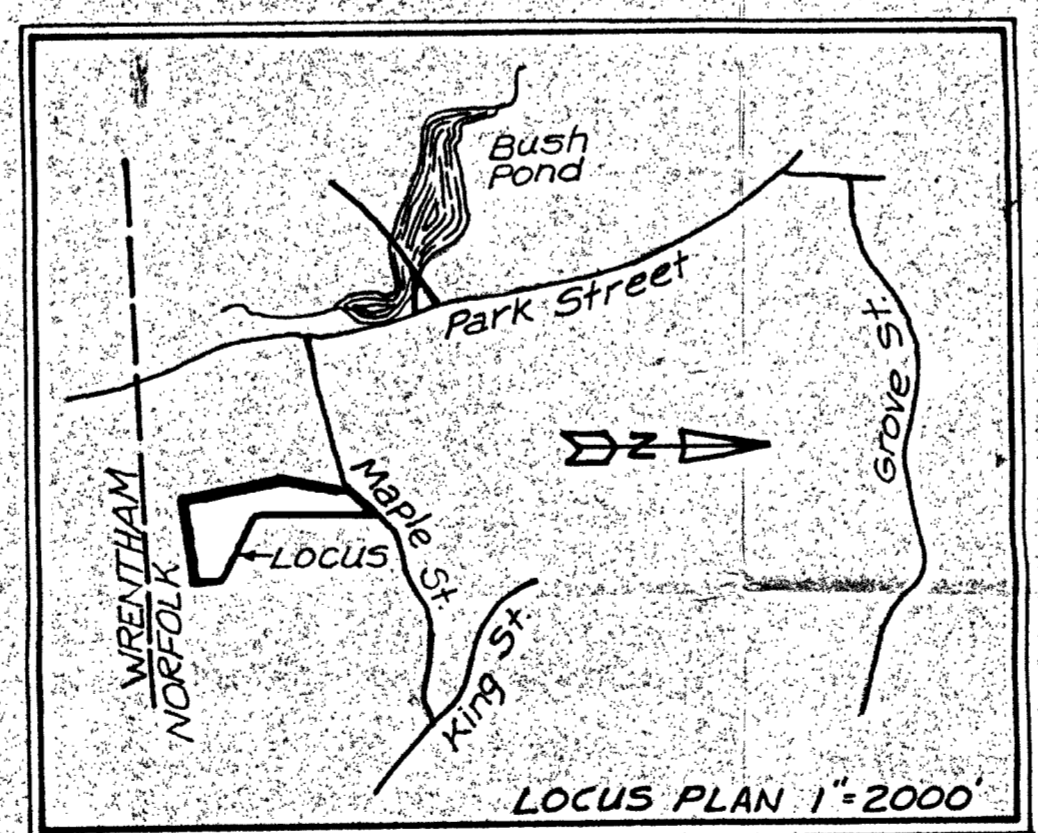


True North  
Derived from plans and surveys  
back to Park St, Wrentham County Layout



AREA =  
917,536.7 S.F.  
OR  
21.064 Ac.



Planning Board Approval  
under the Subdivision Control  
Law not required.

NORFOLK PLANNING BOARD  
*Robert W. Haddleton Sr.*  
*Ernie C. Elbank.*

DATE: October 22, 1979

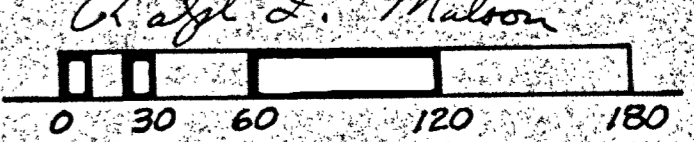
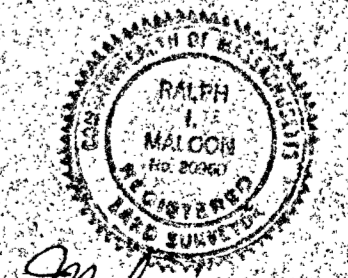
### PLAN OF LAND IN NORFOLK, MASSACHUSETTS

OWNED BY  
James A. Martin, Frederick G. Talabach &  
Peter S. Tsimortos

Scale: 1" = 60' October 9, 1979  
RIM ENGINEERING CO. INC., MANSFIELD, MA.

RALPH I. MALOON

RPE RLS



40343A  
**MAY BE FILED**  
Date Oct. 30, 1979  
By Silva  
Attorney Ralph I. Maloon  
Title Filed  
Bk. 101 P. 10  
Stak'd 101 C.A. Sh. No. 101  
Prints Needed 44 of 68

I certify that this actual survey was made on the ground  
in accordance with the Land Court Instructions of 1971  
on or between Aug. 21, 1979 and Oct. 5, 1979.

*Ralph I. Maloon* Oct 10, 1979  
Ralph I. Maloon Date