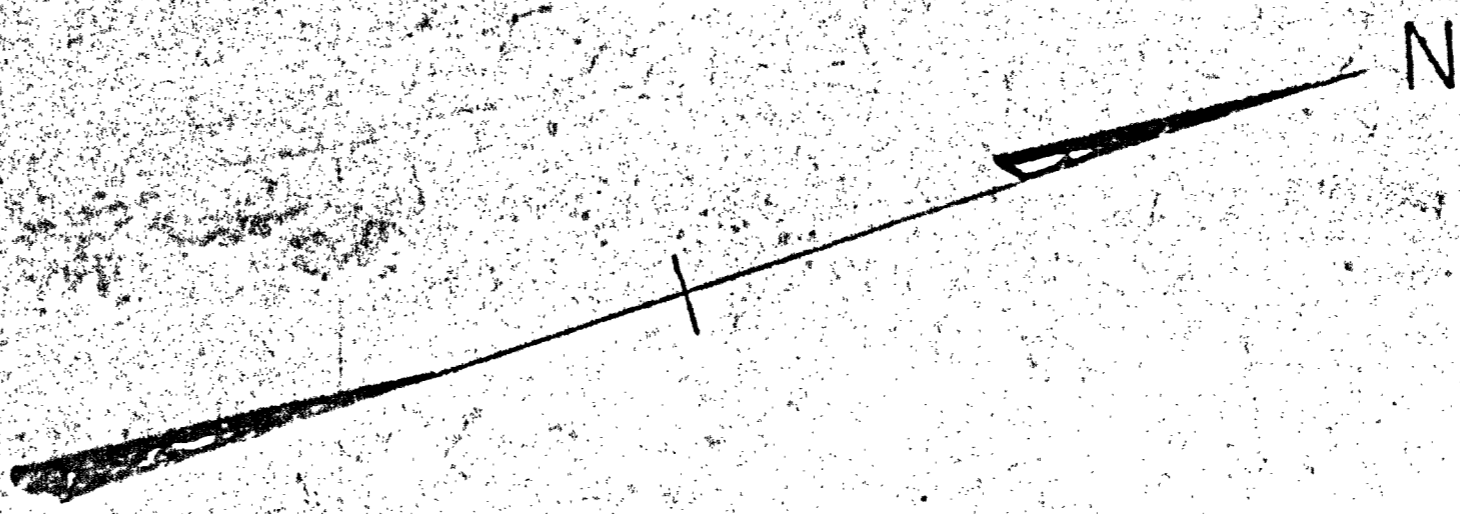


PLAN OF LAND
IN
STOUGHTON, MASS.
SCALE: 1" = 40' AUGUST 24, 1974

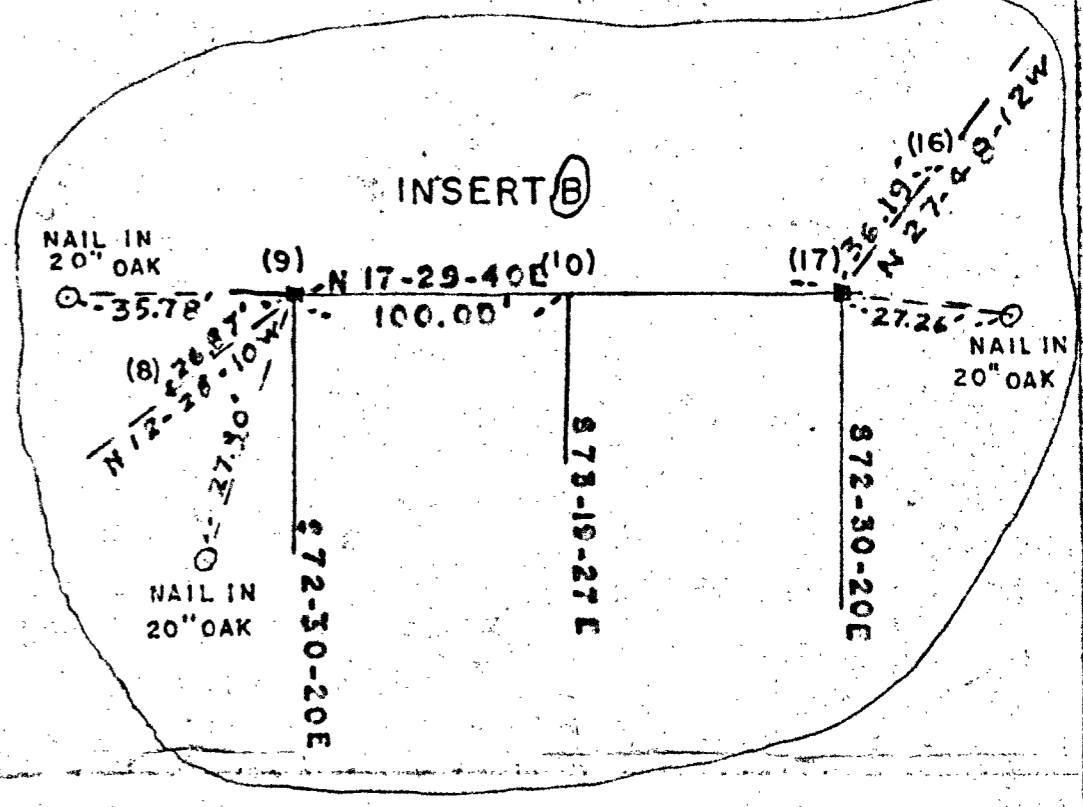
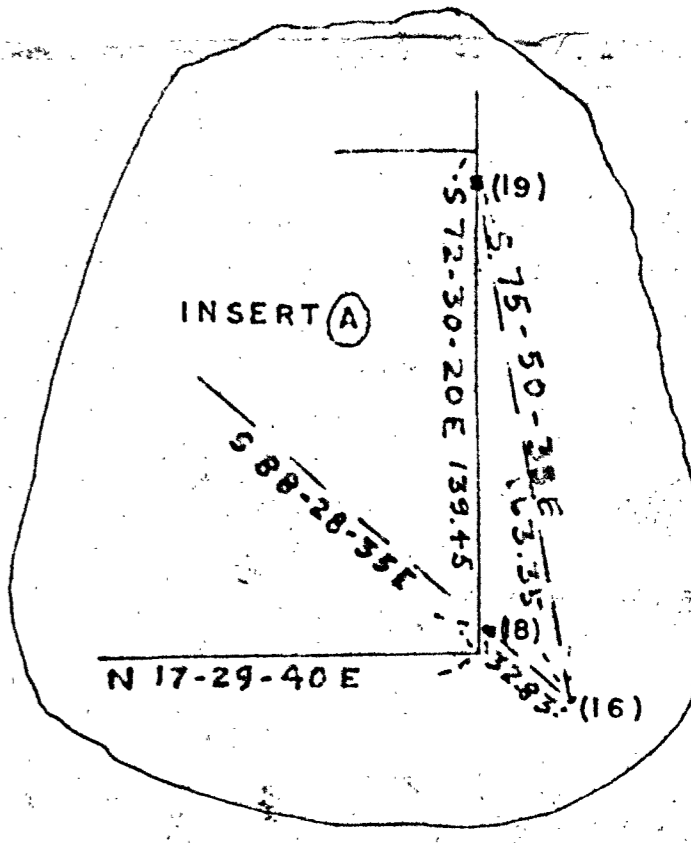
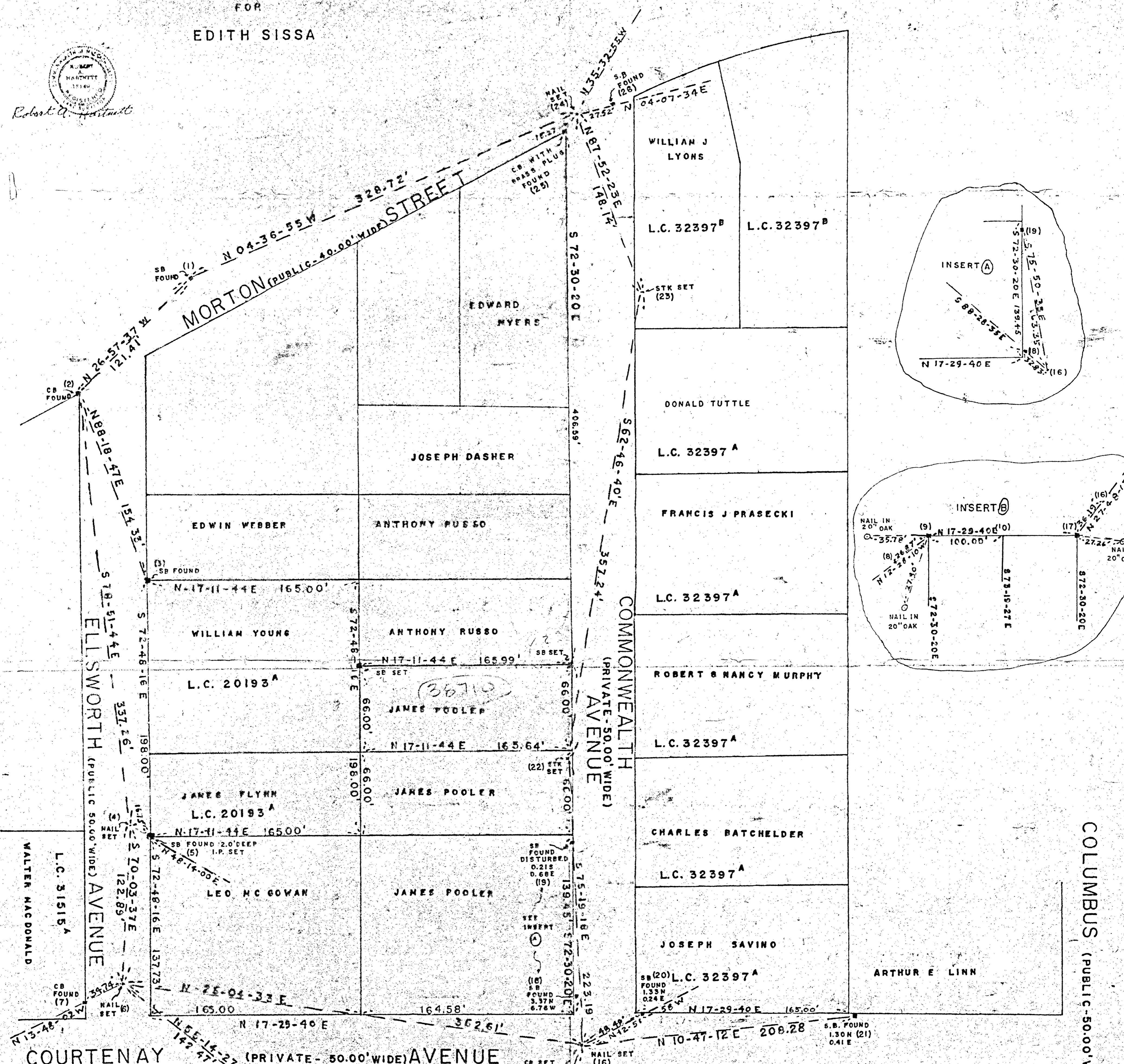
PREPARED BY
SEEKONK ENGINEERING
AT WINTHROP ST.
SEEKONK, MASS.
FOR
EDITH SISSA



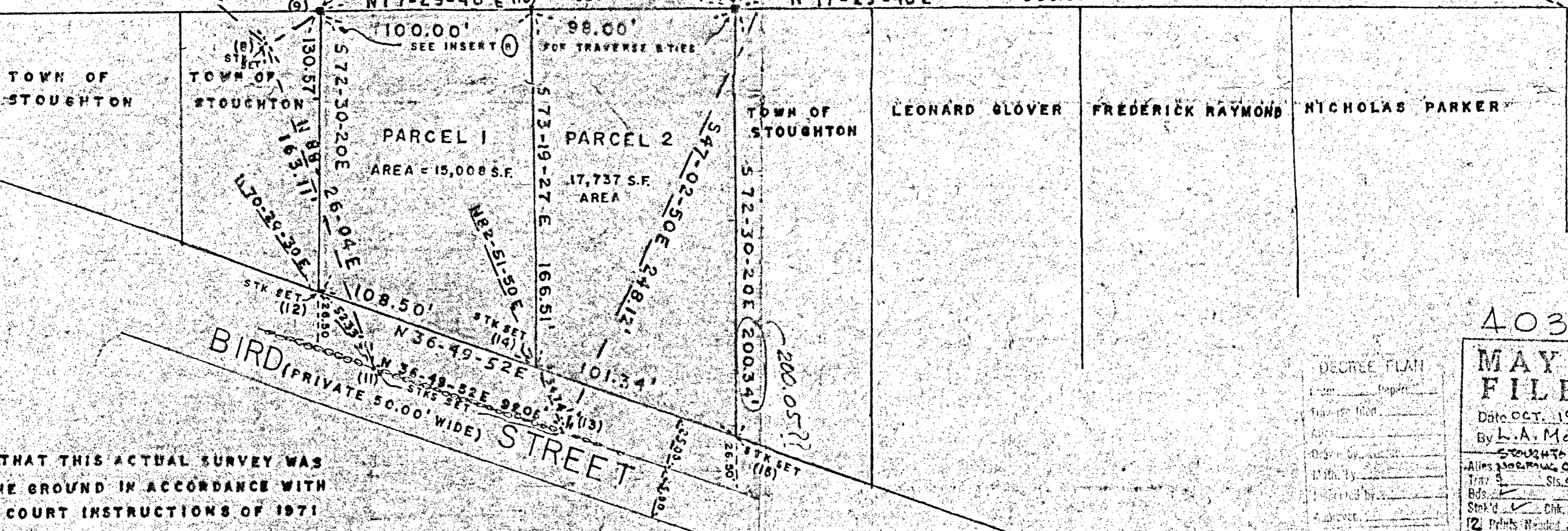
Robert A. Hartnett



40328A



COLUMBUS (PUBLIC - 50.00' WIDE) AVENUE



I CERTIFY THAT THIS ACTUAL SURVEY WAS MADE ON THE GROUND IN ACCORDANCE WITH THE LAND COURT INSTRUCTIONS OF 1971 ON OR BETWEEN MAY 30, 1974 AND AUGUST 24, 1974.

STOUGHTON PLANNING BOARD
APPROVAL UNDER SUBDIVISION CONTROL
LAW NOT REQUIRED
DATE Oct. 25, 1974

NOTE
PARCEL 1 FRONTAGE ESTABLISHED ON COURTENAY AVE
PARCEL 2 FRONTAGE ESTABLISHED ON BIRD STREET

I CERTIFY THAT THE CONDITIONS ON THE GROUND ARE THE SAME NOW AS AT THE TIME OF THE ORIGINAL SURVEY. DATE OCT. 16, 1979
Robert A. Hartnett

STOUGHTON PLANNING BOARD
RE-AFFIRMED DATE: JUNE 25, 1974
Edith Sissa
David A. Ely
Edward J. Sissa

STOUGHTON PLANNING BOARD
RE-AFFIRMED DATE: JULY 13, 1978
Thomas E. Moran
Re-affirmed 9-12-75
Thomas E. Moran

40328 A

DEGREE PLAN	Page
FILED	
Date	<u>OCT. 19, 1979</u>
By	<u>L.A. Moore</u>
State	<u>MASS.</u>
Book	
Page	
Sheet	
Printed	

40328A

40328A