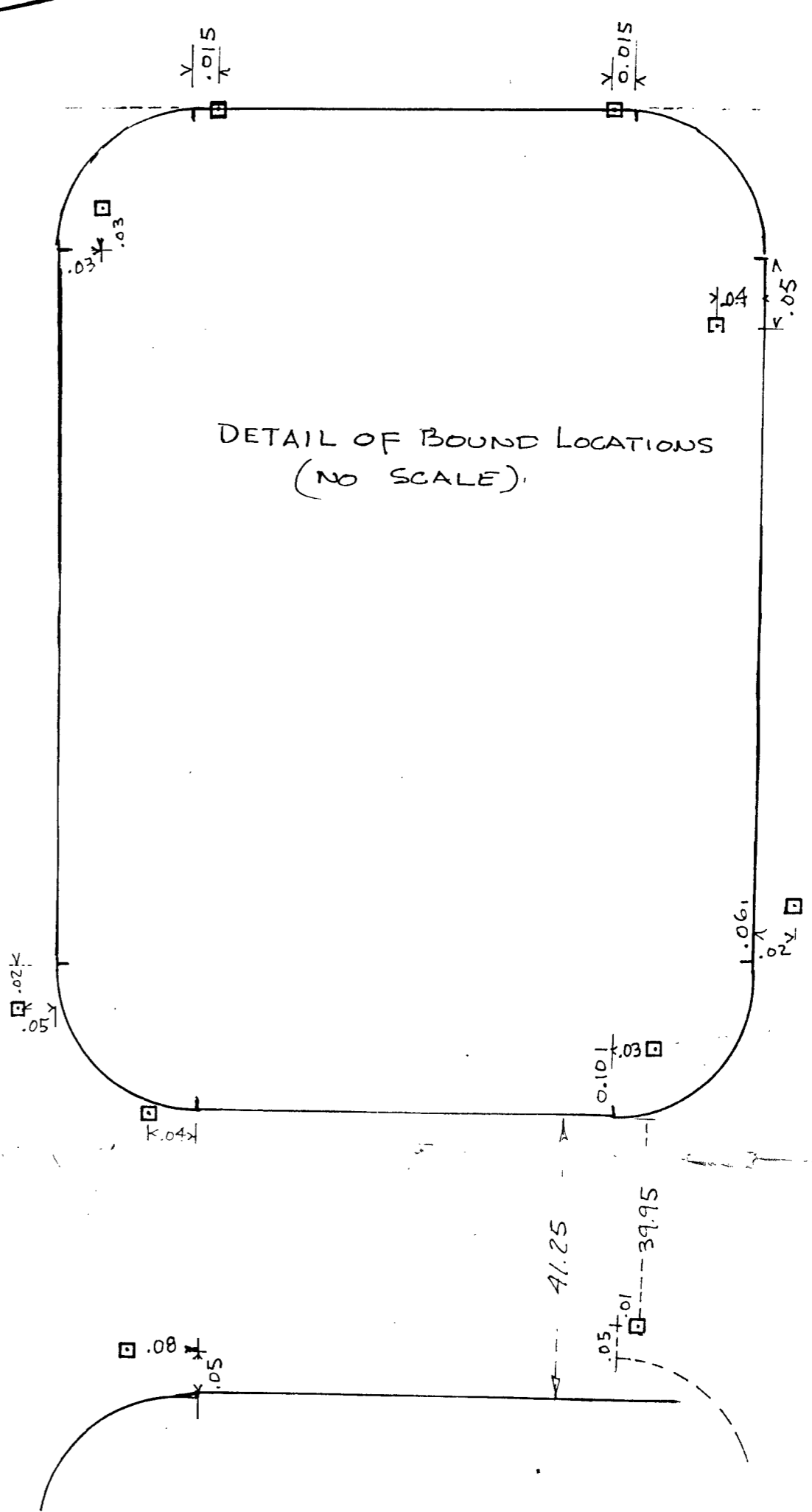
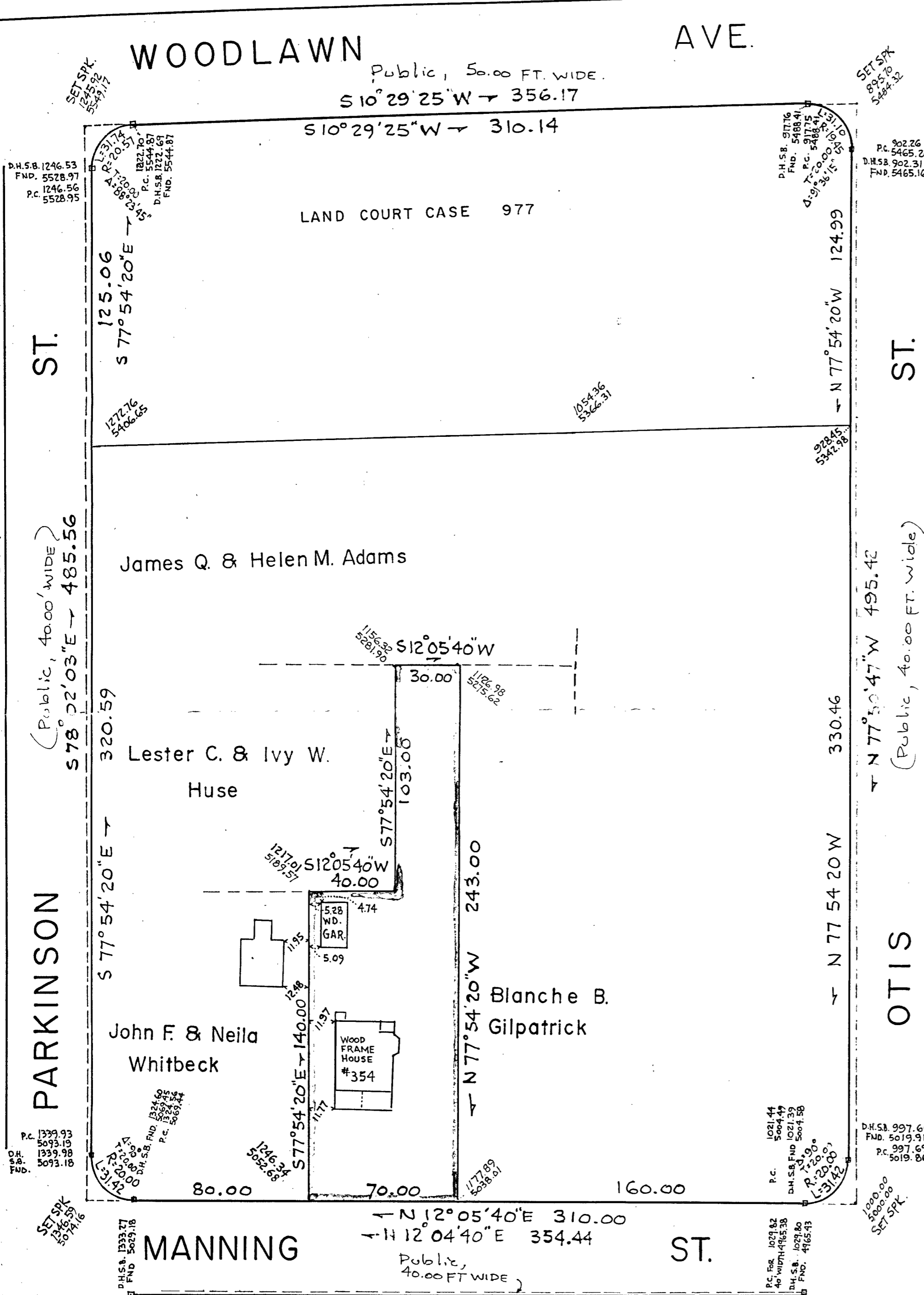


NOTE: PARKINSON ST. & OTIS ST. BOTH ACCEPTED IN 1929 WITH CORNER ROUNDINGS EXTENDING 5' INTO WOODLAWN AVENUE WHICH WAS ACCEPTED IN 1940 AS A 50' WIDE STREET. PARKINSON ST. ACCEPTANCE PLAN CROSS SECTION MANNING ST. SHOWS A 4.25 FEET IN WIDTH.



**PLAN OF LAND
 IN
 NEEDHAM, MASS.**
 SCALE: 1 INCH = 40 FEET CHENEY ENGINEERING CO., INC.
 JUNE 27, 1978 NEEDHAM, MASS.

I CERTIFY THAT THIS ACTUAL SURVEY WAS MADE ON THE GROUND IN ACCORDANCE WITH THE LAND COURT INSTRUCTIONS OF 1971 ON 6/19/78
 I HEREBY CERTIFY THAT THE PROPERTY LINES SHOWN ON THIS PLAN ARE THE LINES DIVIDING EXISTING OWNERSHIPS, AND THE LINES OF THE STREETS AND WAYS SHOWN ARE THOSE OF PUBLIC OR PRIVATE STREETS OR WAYS ALREADY ESTABLISHED, AND THAT NO NEW LINES FOR DIVISION OF EXISTING OWNERSHIPS OR FOR NEW WAYS ARE SHOWN.



Sidney R. Vaughan
 REGISTERED LAND SURVEYOR
 DATE *June 27, 1978*