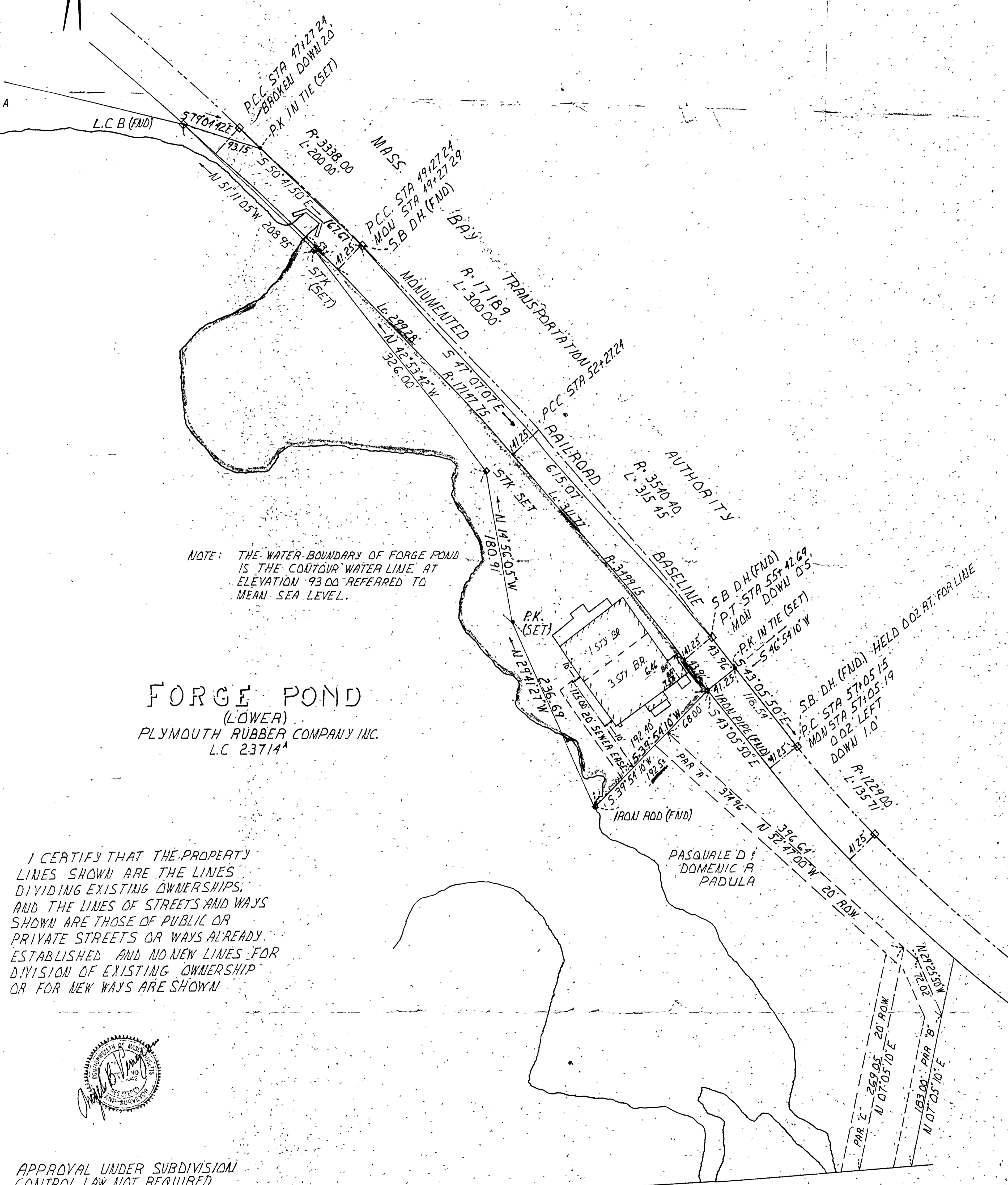


PLAN OF LAND
IN
CANTON, MASS.
BY

ANGELO B. VENEZIANO R.L.S.
5 HIGH ST. MEDFORD, MASS.
SCALE 1"=60' APRIL 14, 1978

SEE NOTE



NOTE: THE WATER BOUNDARY OF FORGE POND IS THE CONTOUR WATER LINE AT ELEVATION 93.00 REFERRED TO MEAN SEA LEVEL.

FORGE POND
(LOWER)
PLYMOUTH RUBBER COMPANY INC.
L.C. 23714

I CERTIFY THAT THE PROPERTY LINES SHOWN ARE THE LINES DIVIDING EXISTING OWNERSHIPS, AND THE LINES OF STREETS AND WAYS SHOWN ARE THOSE OF PUBLIC OR PRIVATE STREETS OR WAYS ALREADY ESTABLISHED AND NO NEW LINES FOR DIVISION OF EXISTING OWNERSHIP OR FOR NEW WAYS ARE SHOWN



APPROVAL UNDER SUBDIVISION CONTROL LAW NOT REQUIRED

NOTE: BEARING SYSTEM WAS HELD FROM THE ADJACENT LAND OWNED BY PADULA RECORDED AS PLAN 566 OF 1964 IN THE NORFOLK REGISTRY OF DEEDS.

BOLIVAR (PUBLIC VARIABLE WIDTH) STREET

CANTON PLANNING BOARD
DATE

I CERTIFY THAT THIS SURVEY WAS MADE ON THE GROUND IN ACCORDANCE WITH THE LAND COURT INSTRUCTIONS OF 1971 BETWEEN MAR 23 AND 24 1978

Angelo B. Veneziano

