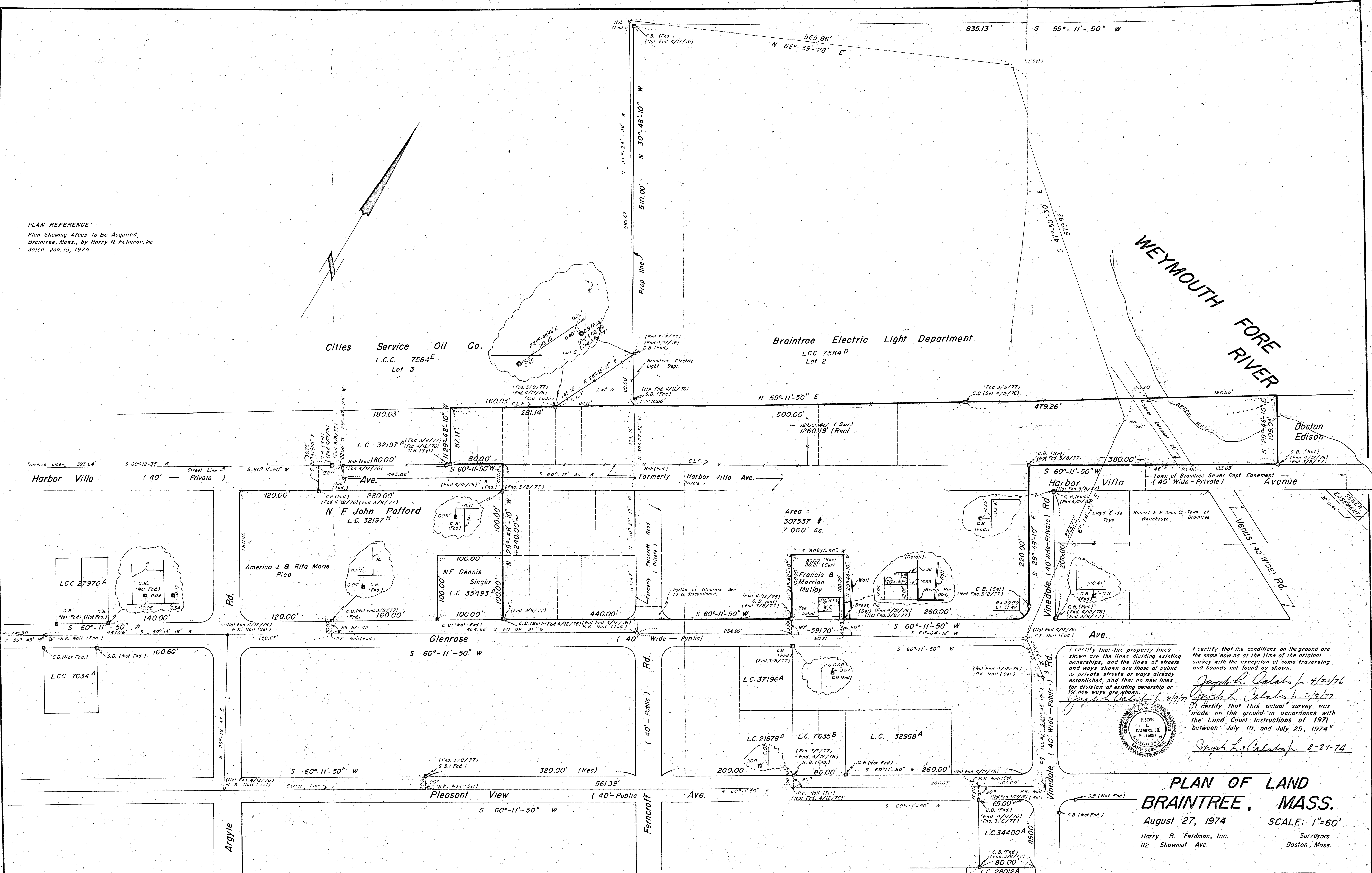


PLAN REFERENCE:  
Plan Showing Areas To Be Acquired,  
Braintree, Mass., by Harry R. Feldman, Inc.  
dated Jan. 15, 1974.



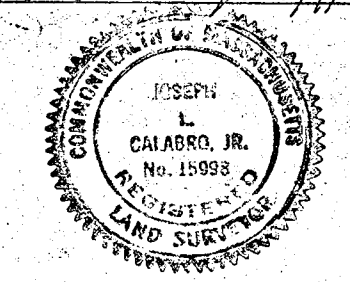
I certify that the property lines shown are the lines dividing existing ownerships, and the lines of streets and ways shown are those of public or private streets or ways already established, and that no new lines for division of existing ownership or for new ways are shown.

*Joseph L. Calabro* 7/21/76  
*Joseph L. Calabro* 3/9/77

I certify that the conditions on the ground are the same now as at the time of the original survey with the exception of some traversing and bounds not found as shown.

I certify that this actual survey was made on the ground in accordance with the Land Court Instructions of 1971 between July 19, and July 25, 1974.

*Joseph L. Calabro* 8-27-74



**PLAN OF LAND  
BRAINTREE, MASS.**  
August 27, 1974 SCALE: 1"=60'  
Harry R. Feldman, Inc. Surveyors  
112 Showmut Ave. Boston, Mass.

39552