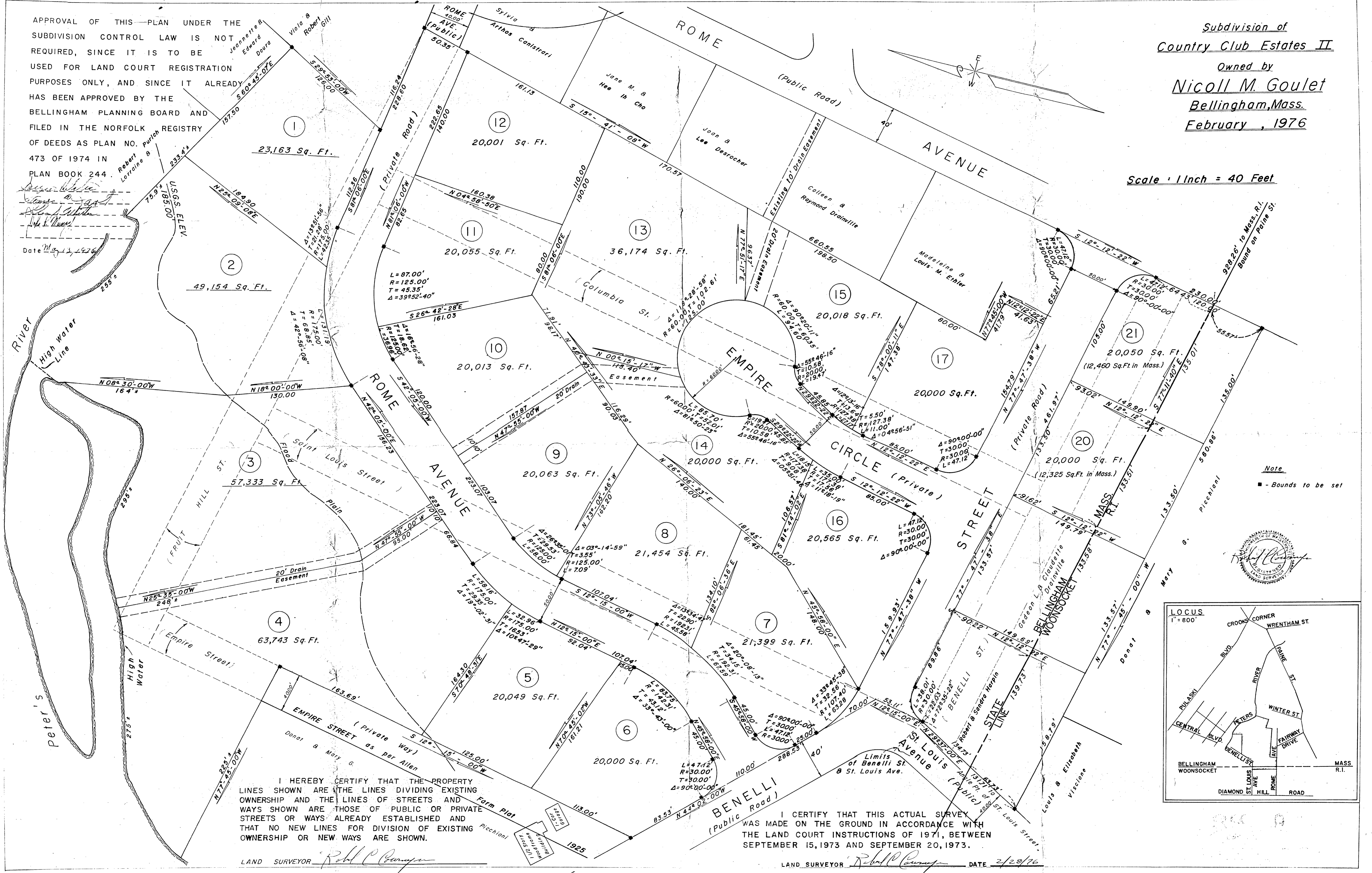


APPROVAL OF THIS PLAN UNDER THE SUBDIVISION CONTROL LAW IS NOT REQUIRED, SINCE IT IS TO BE USED FOR LAND COURT REGISTRATION PURPOSES ONLY, AND SINCE IT ALREADY HAS BEEN APPROVED BY THE BELLINGHAM PLANNING BOARD AND FILED IN THE NORFOLK REGISTRY OF DEEDS AS PLAN NO. PURVON 473 OF 1974 IN PLAN BOOK 244.

Date 2/29/76

Subdivision of  
Country Club Estates II  
 Owned by  
Nicoll M. Goulet  
Bellingham, Mass.  
February, 1976

Scale: 1 Inch = 40 Feet



I HEREBY CERTIFY THAT THE PROPERTY LINES SHOWN ARE THE LINES DIVIDING EXISTING OWNERSHIP AND THE LINES OF STREETS AND WAYS SHOWN ARE THOSE OF PUBLIC OR PRIVATE STREETS OR WAYS ALREADY ESTABLISHED AND THAT NO NEW LINES FOR DIVISION OF EXISTING OWNERSHIP OR NEW WAYS ARE SHOWN.

I CERTIFY THAT THIS ACTUAL SURVEY WAS MADE ON THE GROUND IN ACCORDANCE WITH THE LAND COURT INSTRUCTIONS OF 1971, BETWEEN SEPTEMBER 15, 1973 AND SEPTEMBER 20, 1973.

LAND SURVEYOR Robert C. Conway

LAND SURVEYOR Robert C. Conway DATE 2/29/76

