

PLAN OF LAND IN
FOXBOROUGH, NORFOLK CO., MASS.

SCALE 1" = 20' MAY 28, 1976

LAND SURVEYS INCORPORATED
 1106 MAIN ST BROCKTON MASS

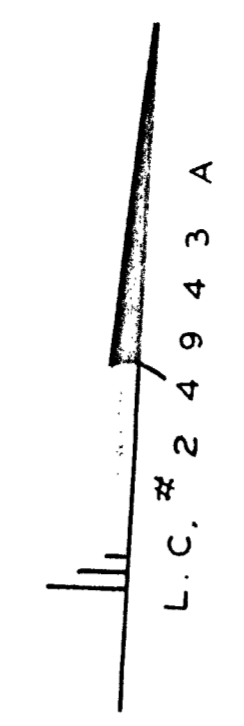
I CERTIFY THAT THIS ACTUAL SURVEY WAS
 MADE ON THE GROUND IN ACCORDANCE WITH THE
 LAND COURT INSTRUCTIONS OF 1971
 BETWEEN MAY 24, 1976
 AND MAY 27, 1976



Francis D. Healy
 Registered Professional Land Surveyor
 Chapter of, Section 812

DATE MAY 28, 1976

Francis D. Healy

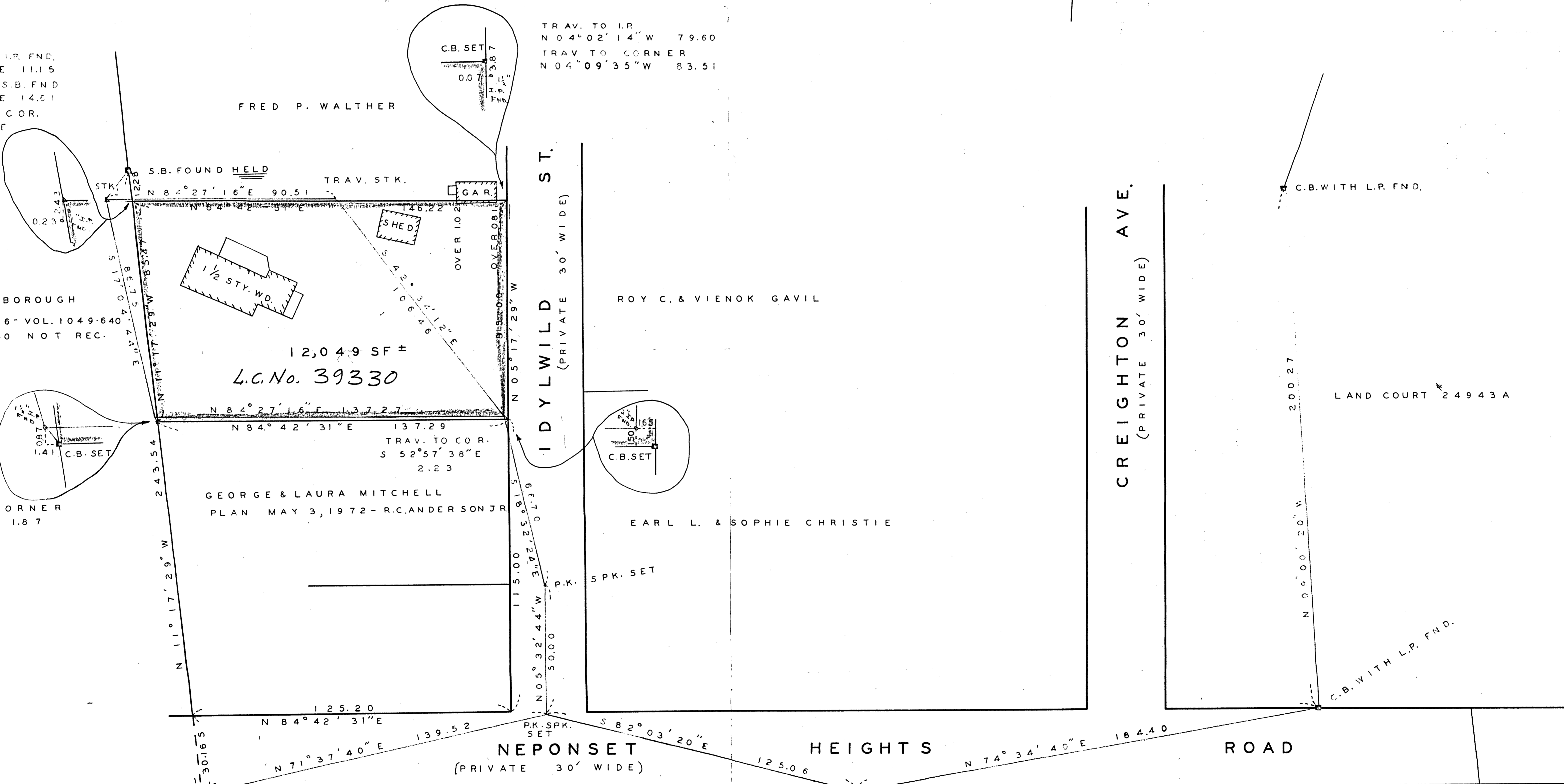


TRAV. STK. TO I.P. FND.
 S 78° 19' 14" E 111.15
 TRAV. STK. TO S.B. FND
 N 33° 27' 16" E 14.01
 TRAV. STK. TO COR.
 N 84° 10' 59" E
 10.45

TRAV. TO I.P.
 N 04° 02' 14" W 79.60
 TRAV. TO CORNER
 N 04° 09' 35" W 83.51

TOWN OF FOXBOROUGH
 PLAN NOV. 1906 - VOL. 1049-640
 " OCT. 1930 NOT REC.

TRAV. TO CORNER
 S 66° 42' 17" E 1.87



NOTE: LOCUS CONSISTS OF LOT 3 AND PART OF LOT 4
 ON PLAN APRIL, 1909 - BK. 1303 - 213