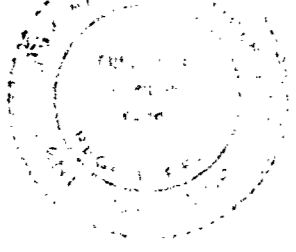


"I hereby certify that the property lines shown on this plan are the lines of the streets and ways shown on the plan of Private streets or ways already established, and the new lines for division of existing ownership or new ways are shown."

*Fredrick T. Wall*



PLAN OF LAND IN HOLBROOK

SCALE 1"=40' DECEMBER 11, 1972.

THE SCHUYLER CLAPP CO.  
MIDDLEBORO MASS.

I CERTIFY THAT THIS ACTUAL SURVEY WAS MADE ON THE GROUND IN ACCORDANCE WITH THE LAND COURT INSTRUCTIONS OF 1971, BETWEEN JUNE, 17 & NOV, 11, 1972.

DECEMBER 11, 1972.

*Fredrick T. Wall*

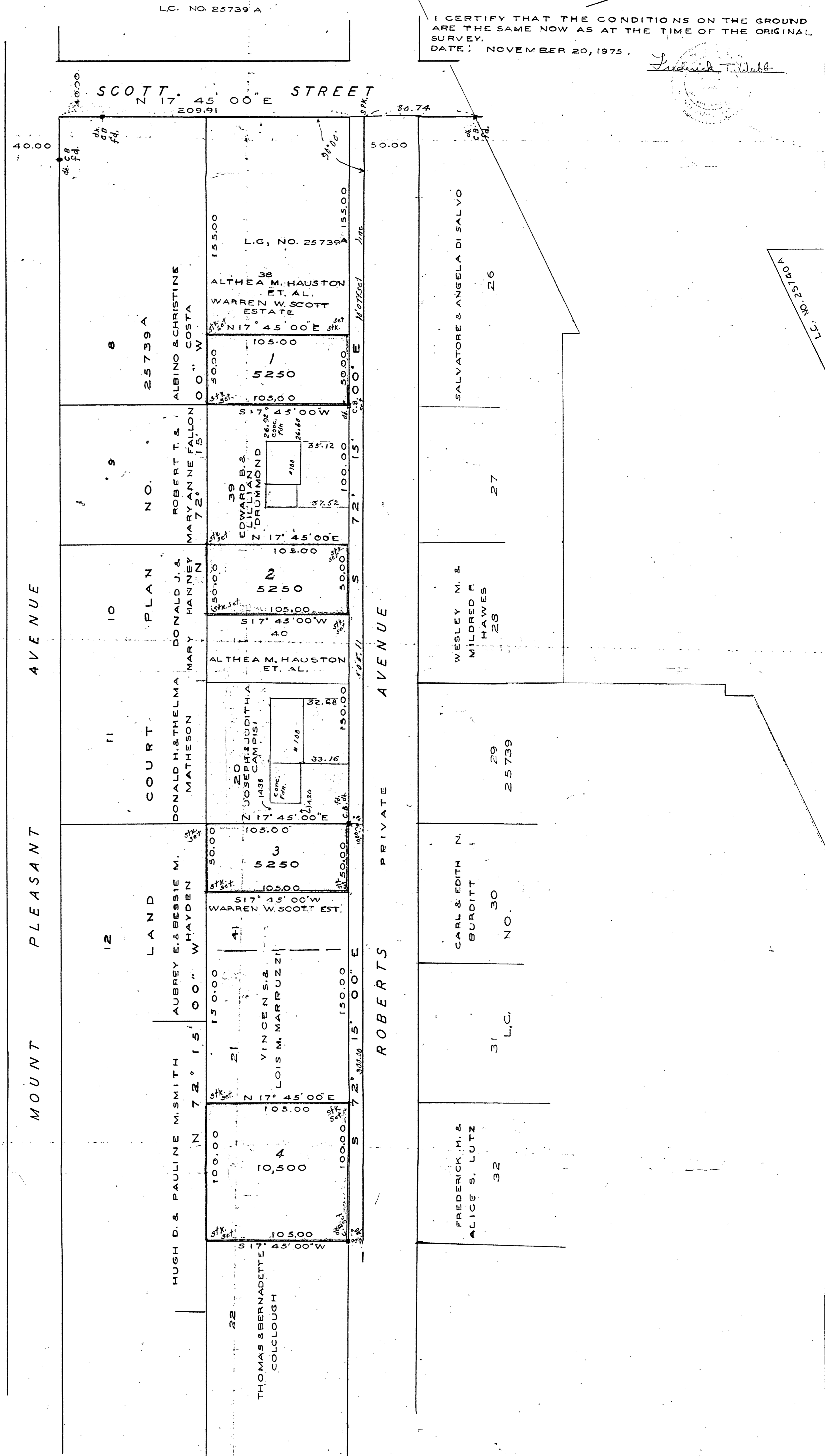
34 MAYFLOWER AVE.  
MIDDLEBORO MASS.



I CERTIFY THAT THE CONDITIONS ON THE GROUND ARE THE SAME NOW AS AT THE TIME OF THE ORIGINAL SURVEY.  
DATE: NOVEMBER 20, 1975.

*Fredrick T. Wall*

L.C. NO. 25739



L.C. NO. 25740