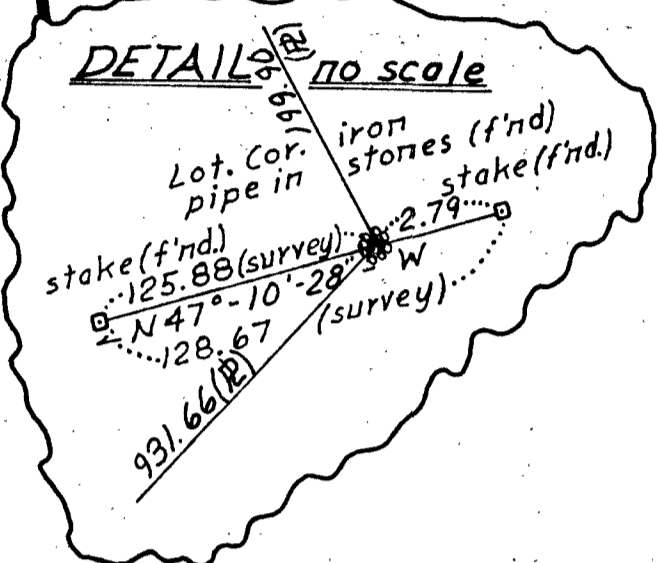


Area = 23.63876 acres



NOTE: This plan refers to Millis Assessors Sheet 25, Lot 3.

"I hereby certify that the property lines shown on this plan are the lines dividing existing ownerships, and the lines of streets and ways shown are those of public or private streets or ways already established, and that no new lines for division of existing ownership or for new ways are shown, and that this actual survey was made on the ground in accordance with the Land Court Instructions of 1971 between May 14, and July 6, 1976."



John D. Halmon, Jr. (7/6/76)
R. L. S. # 21954

PETITIONERS
PLAN OF LAND
in
MILLIS, MASS.
CLAIMED BY
RUTH M. & ELISE RICHARDSON
Scale: 1" = 60' Date: July 6, 1976
PREPARED BY
GUERRIERE AND HALNON, INC.
Engineering and Land Surveying
707 Main Street, Millis, Mass.

